

212fw-17 Nimes Motif Shawl



Suggested yarn:

- Pierrot Yarns Nimes [70% baby alpaca, 30% nylon; 142 yds/130m per 0.88 oz./25g skein];
 - color #01 off-white, 4 skeins [80g]
 - color #02 beige gray, 2 skeins [50g]
 - color #03 cinnamon, 2 skeins [50g]

Tools/Notions:

- 2.5mm (approx. US B or C) crochet hook or size necessary to achieve gauge

Finished measurements:

- width 55cm/21.65"
- length 155cm/61.02"

Gauge:

- Each motif should measure 10cm/3.94" along each side.

Gauge may vary according to individual crochet style. Change hook size if necessary to achieve gauge. Alternatively, rework pattern with your own gauge measurements.

Crochet Tips

※Entire shawl is worked with 1 strand of yarn at a time.

Shawl: ch4 and join to form ring; crochet motif according to chart. Starting from second motif, join as you go on the final round of each motif.

Finishing: Work edging in the round.

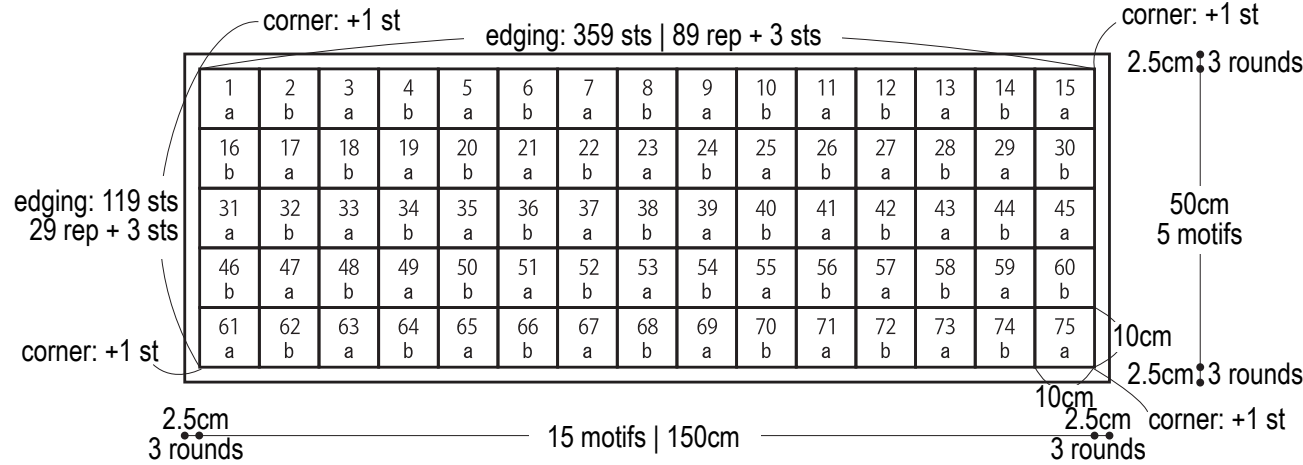
Abbreviations:

ch = chain

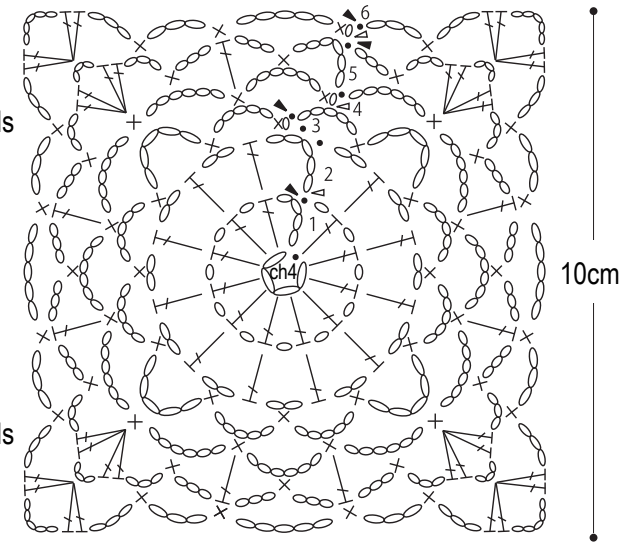
rep = repeat(s)

st = stitch

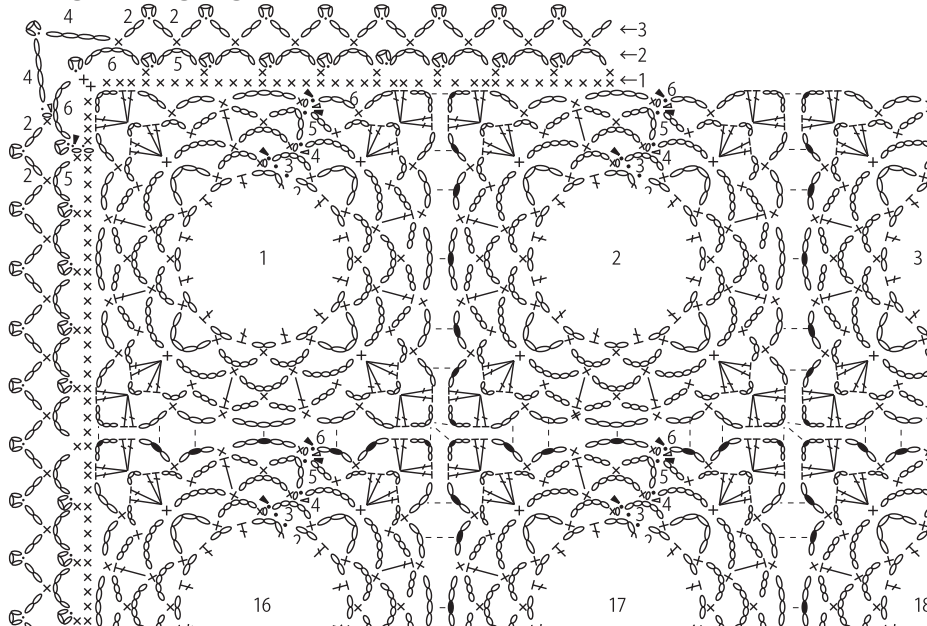
Shawl (2.5mm hook)



Motif (2.5mm hook)



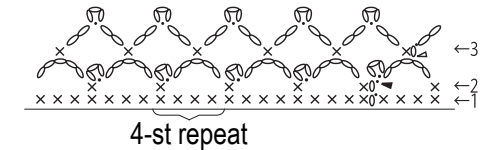
Motif joining & edging instructions (2.5mm hook)



◁ = join yarn
◄ = cut yarn

Edging (2.5mm hook)

#01 off-white



Color sequences

	version A	version B
round 6	#01 off-white	#01 off-white
rounds 4-5	#02 beige gray	#03 cinnamon
rounds 2-3	#03 cinnamon	#02 beige gray
round 1	#01 off-white	#01 off-white