

Felicia Shawl



Suggested yarn:

- Keito-Zakka Stores Felicia [58% linen, 16% cotton, 26% viscose; 164 yds/150m per 1.76 oz./50g skein]; color #01 pearl white, 4 skeins [200g]

Tools/Notions:

- 2.5mm (approx. US B or C) crochet hook or size necessary to achieve gauge

Finished measurements:

- height 75cm/29.53"
- length (including fringe) 149cm/58.66"

Gauge (10cm/4" square):

- pattern stitch: 6.5 chain spaces and 13 rows

Gauge may vary according to individual crochet style. Change hook size if necessary to achieve gauge. Alternatively, rework pattern with your own gauge measurements.



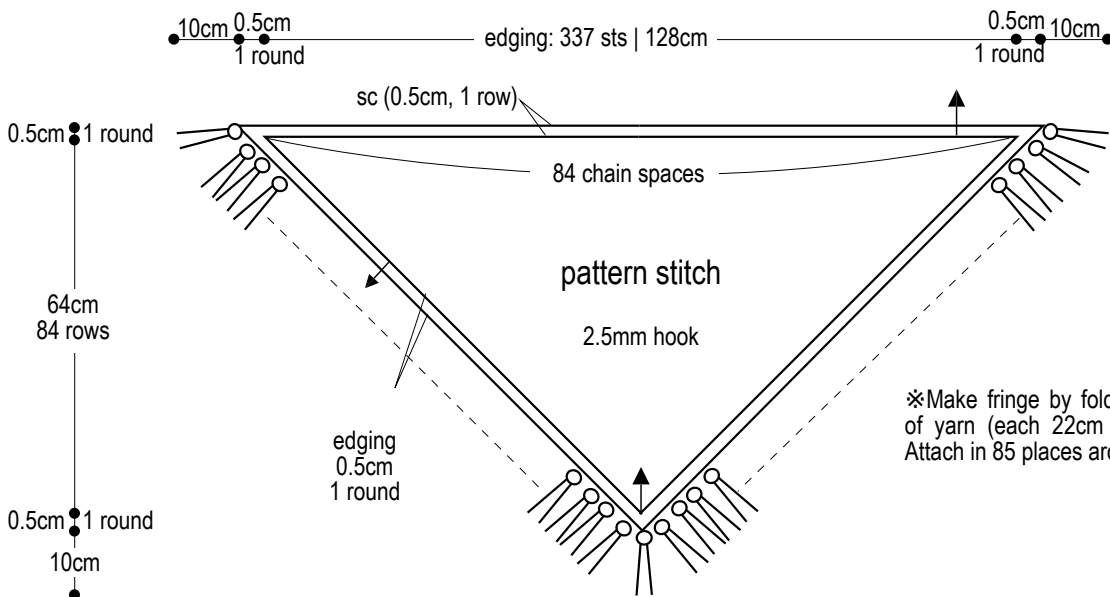
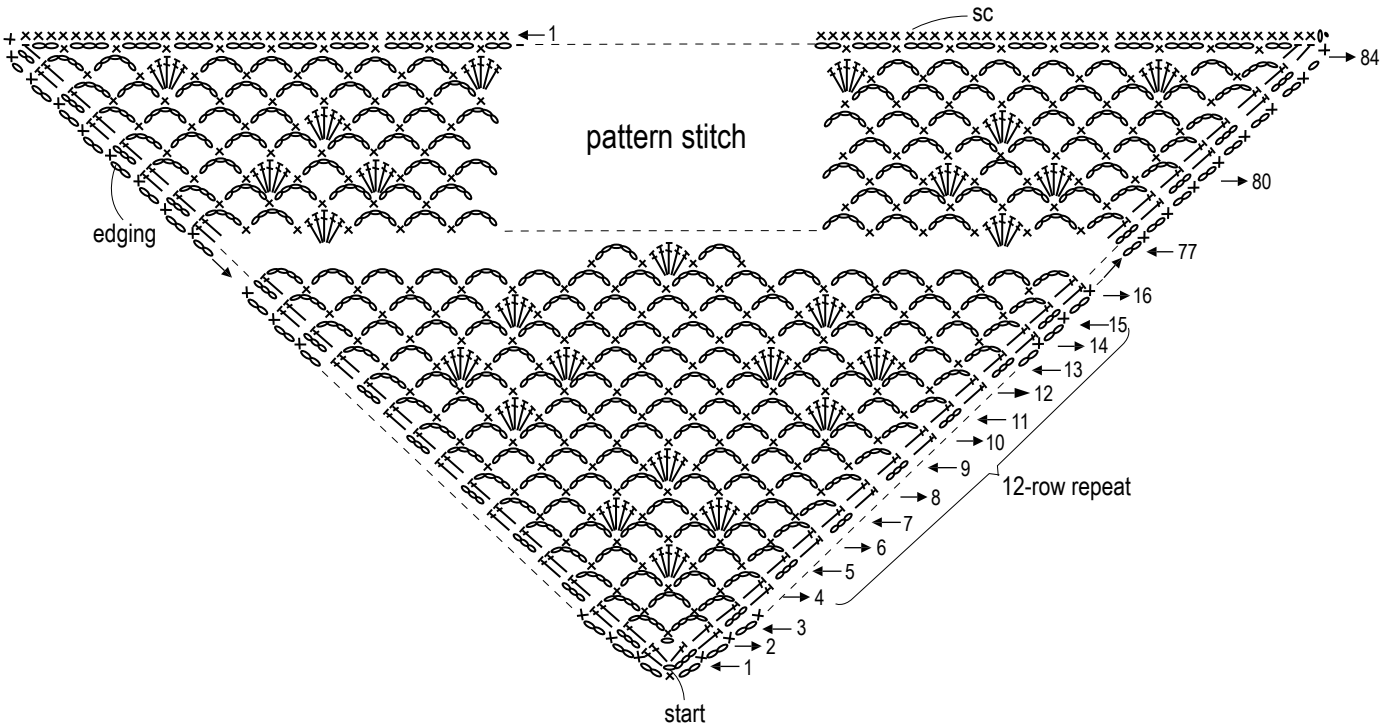
Crochet Tips

Chain 1 to begin, ch3 for turning post, then work in pattern stitch, increasing at each edge as indicated. For final row, work *sc, ch3* across. Continuing on from body, work edging as follows: work 1 row of sc across longest edge, then work edging along the remaining two edges. Attach fringe to the two shortest sides of the shawl.

Abbreviations:

- ch = chain
- sc = single crochet (US)

Instructions (2.5mm hook)



※Make fringe by folding 4 strands of yarn (each 22cm long) in half. Attach in 85 places around edge.