

amicomo10-2 Carta Drop-stitch Shawl



Suggested yarn:

- Pierrot Yarns Carta [90% cotton, 10% silk; 133 yds/122m per 1.41 oz./40g skein]; color #54 pink beige, 3 skeins [225g]

Tools/Notions:

- 3.9mm (approx. US 6) double-pointed knitting needles or size necessary to achieve gauge
- 3.0mm (approx. US C or D) crochet hook or size necessary to achieve gauge

Finished measurements:

- width 35cm/13.78"
- length 175cm/68.90"

Gauge (10cm/4" square):

- pattern stitch: 23 sts and 23 rows

Gauge may vary according to individual knitting style. Change needle size if necessary to achieve gauge. Alternatively, rework pattern with your own gauge measurements.

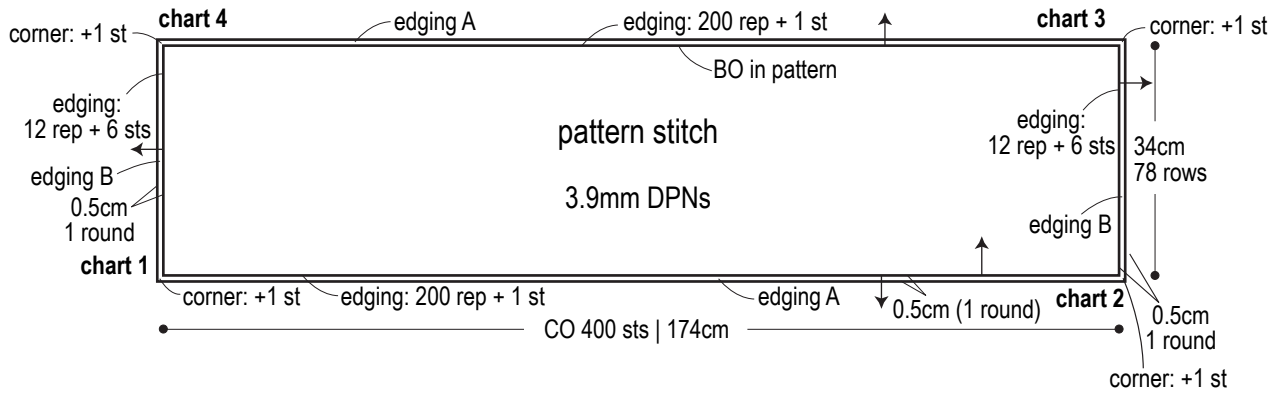
Knitting Tips

Cast on with long-tail cast-on method. Use double-pointed needles (or a circular needle) to accommodate the large number of stitches. Work in pattern stitch. Bind off by working purl stitches and binding them off.

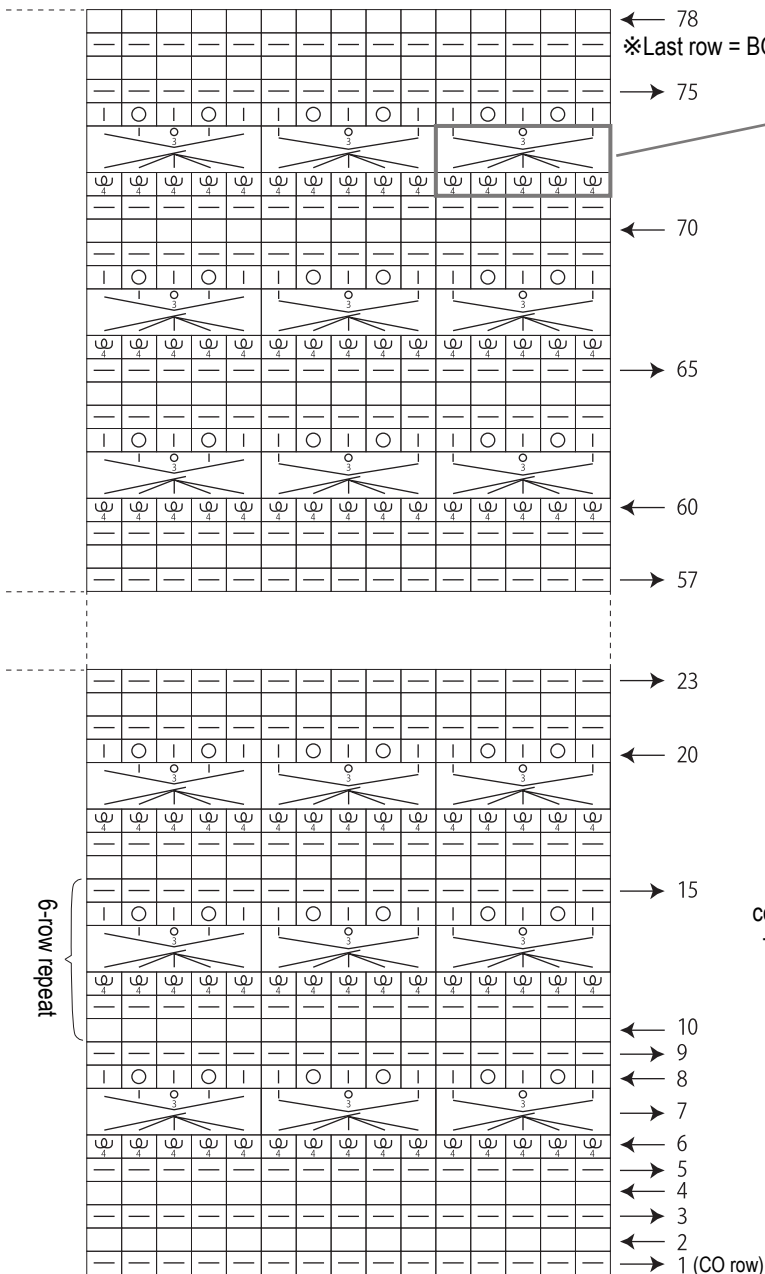
Abbreviations:

BO = bind off
CO = cast on
rep = repeat(s)

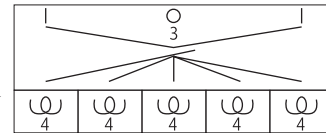
Shawl



Pattern stitch (3.9mm DPNs) □ = □ knit



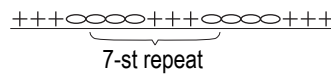
← 78
*Last row = BO purl sts.



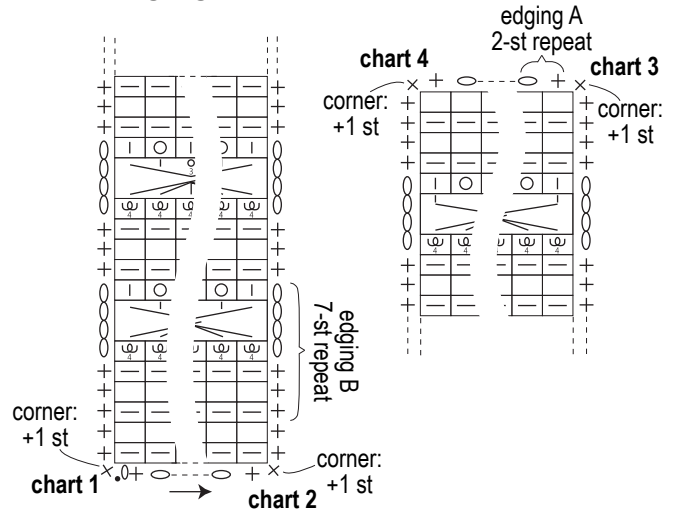
Edging A (3.0mm hook)



Edging B (3.0mm hook)



Edging placement (3.0mm hook)



*Although there is a pattern stitch, the base is garter stitch. Therefore knit every row except where pattern shows otherwise.

View a drop-stitch tutorial at the following link:

http://youtu.be/GrFUI_qo5EI

