

# 212s-10 Soft Silk Ramie Triangular Shawl



## Suggested yarn:

- Pierrot Yarns Soft Silk Ramie [70% ramie, 30% silk; 514 yds/470m per 3.53 oz./100g cone]; color #06 leaf green, 2 cones [160g]

## Tools/Notions:

- 2.0mm (US steel hook 4) crochet hook or size necessary to achieve gauge

## Finished measurements:

- width 137cm/53.94"
- height 70cm/27.56"

## Gauge:

- motif A should measure 9cm/3.54" square

*Gauge may vary according to individual crochet style. Change hook size if necessary to achieve gauge. Alternatively, rework pattern with your own gauge measurements.*

## Crochet Tips

**Motif A:** ch6 and join into a ring; work motif as charted. Starting from second motif, seam motifs together on the final round. Work motifs and join together in order from 1 to 45.

**Motif B:** Begin as for motif A; work back and forth in rows. Work motifs and join together in order from 1 to 10.

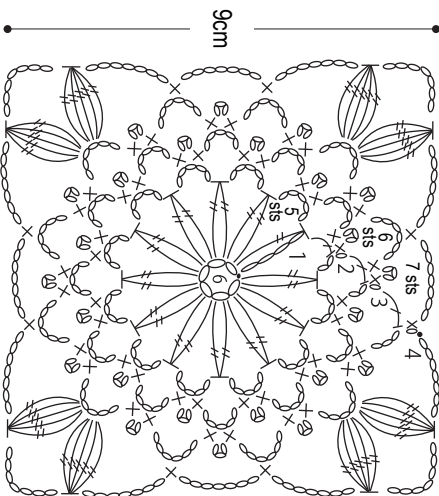
**Edging A & B:** Join yarn where indicated, and work 3 rounds of edging A. On round 4, work 2 short sides in edging B, but long side in edging A.

※Refer to schematic for motif seaming order.

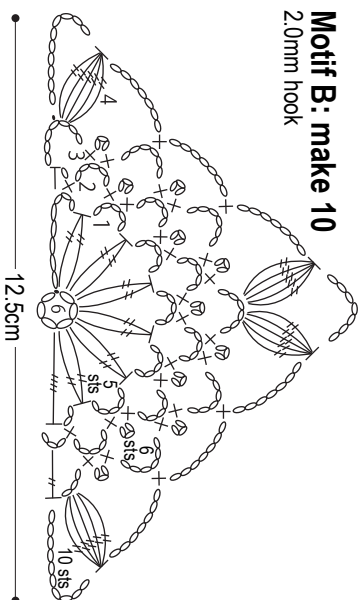
## Abbreviations:

ch = chain  
sc = single crochet (US)  
sl st = slip stitch  
tr = treble crochet (US)

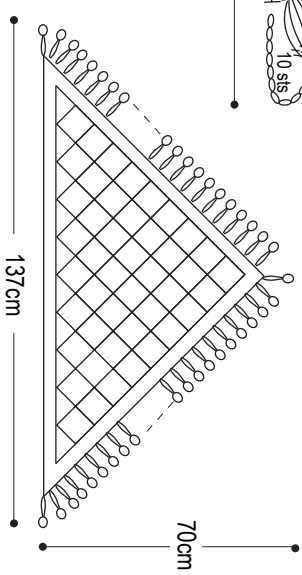
**Motif A: make 45** (2.0mm hook)



**Motif B: make 10**  
2.0mm hook



**Finished item**



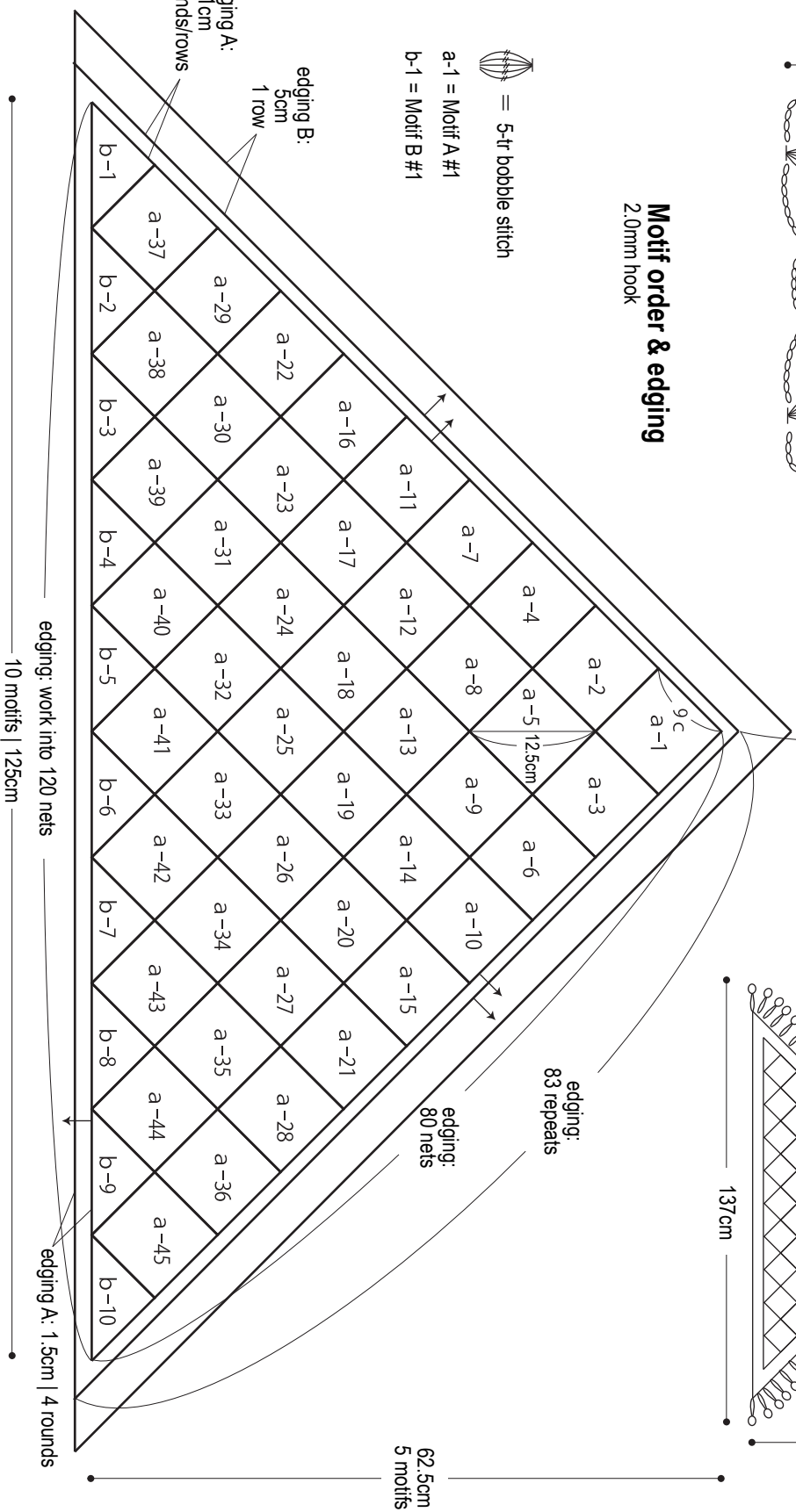
**Motif order & edging**  
2.0mm hook



a-1 = Motif A #1  
b-1 = Motif B #1

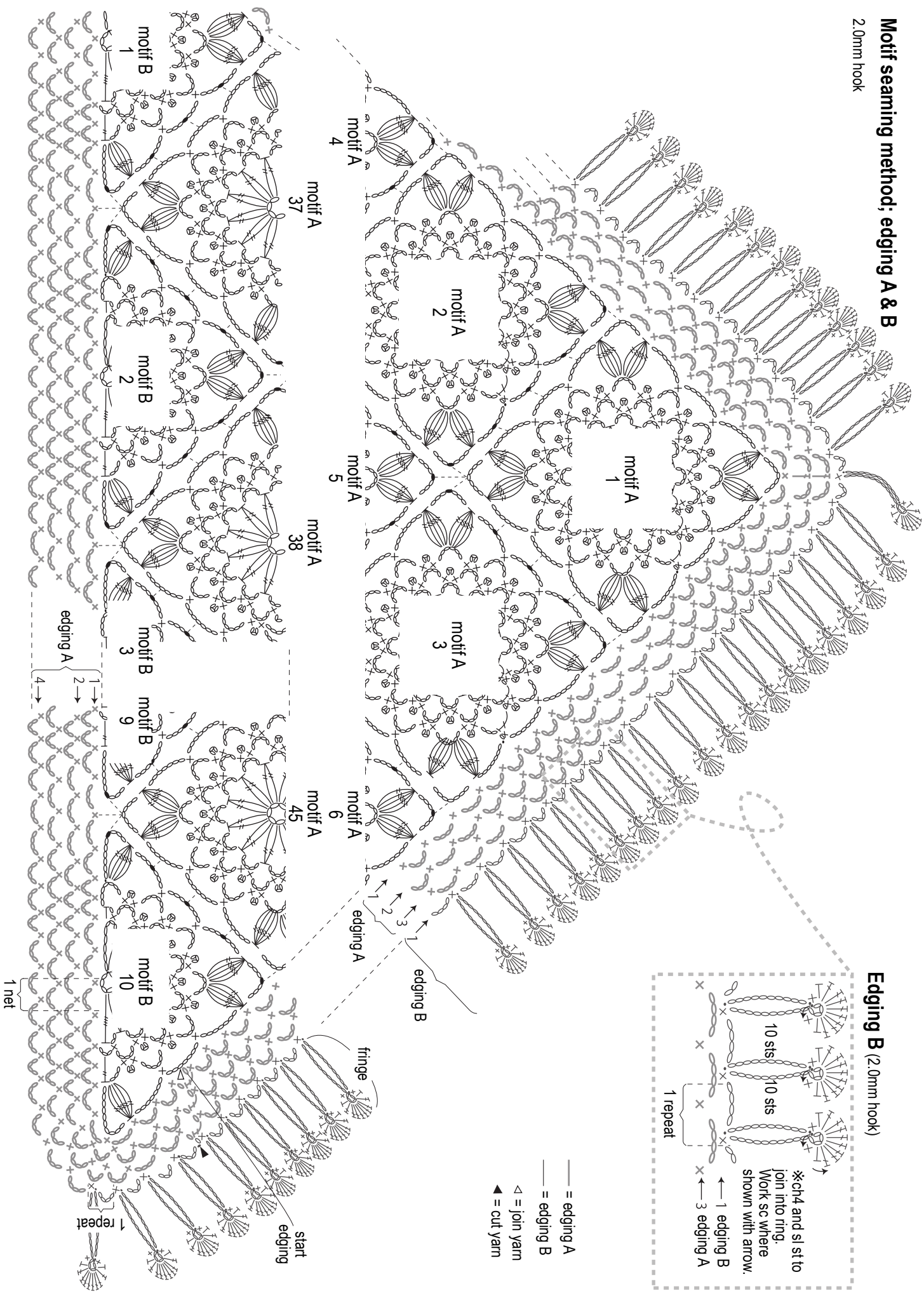
edging B:  
5cm  
1 row

edging A:  
1cm  
3 rounds/rows

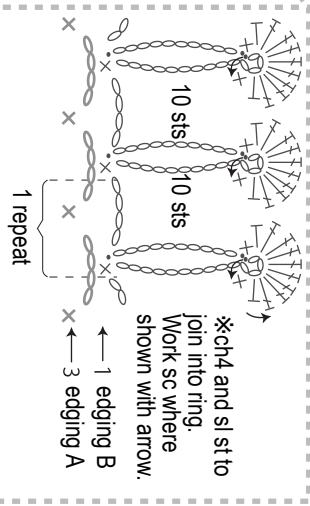


# Motif seaming method; edging A & B

2.0mm hook



## Edging B (2.0mm hook)



\*ch4 and sl st to join into ring. Work sc where shown with arrow.

← 1 edging B  
← 3 edging A

- = edging A
- - - = edging B
- △ = join yarn
- ◊ = cut yarn