

212ss-18 Silk Silpalon Shawl



Suggested yarn:

- Pierrot Yarns Silk Silpalon [50% silk, 50% silpalon acrylic; 273 yds/250m per 1.76 oz./50g cone]; color #6108 pearl peach, 4 cones [175g]

Tools/Notions:

- 2.5mm (approx. US B or C) crochet hook or size necessary to achieve gauge

Finished measurements:

- width 45cm/17.72"
- length 150cm/59.06"

Gauge (10cm/4" square):

- pattern stitch: 29.5 sts and 15.5 rows

Gauge may vary according to individual crochet style. Change hook size if necessary to achieve gauge. Alternatively, rework pattern with your own gauge measurements.

Crochet Tips

Body of shawl: Chain to begin, working first row into bottom loops of chain. Work in pattern stitch.

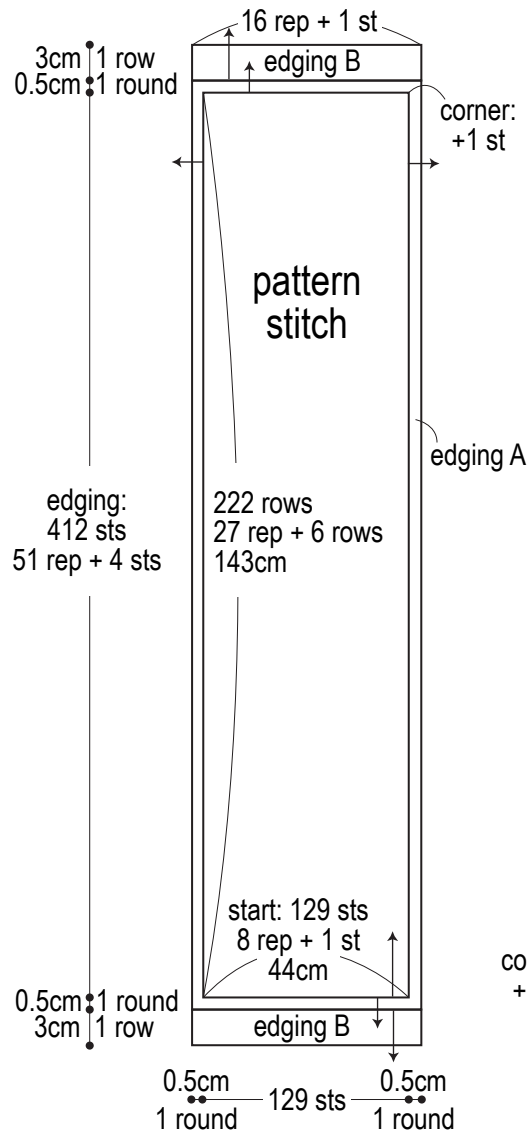
Finishing: Continuing from body, work edging A in the round around entire shawl. Work edging B at each short end.

Abbreviations:

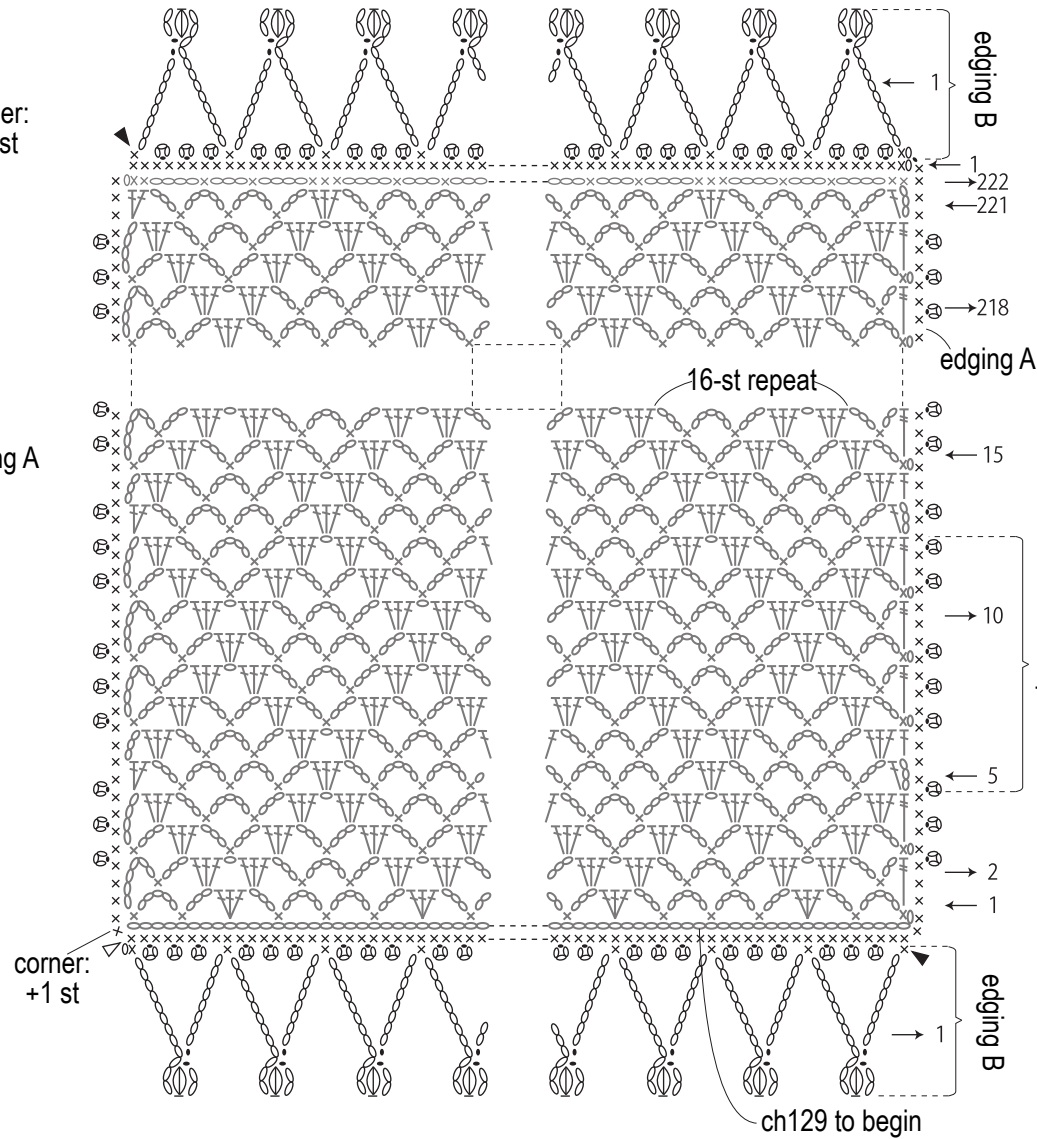
ch = chain

rep = repeat(s)

Shawl (2.5mm hook)



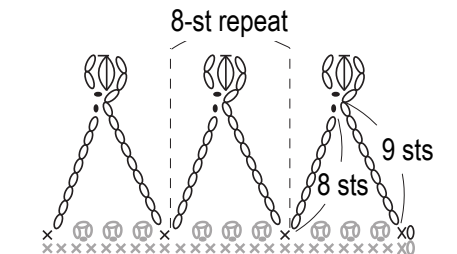
Pattern stitch & edging (2.5mm hook)



Edging A (2.5mm hook)



Edging B (2.5mm hook)



△ = join yarn
▲ = cut yarn