

211F-10 Shawl Vest with Native Pattern



Suggested yarn:

- Pierrot Yarns Dot Wool [100% wool; 558 yds/510m per 3.53 oz./100g cone];
 - color #1 biscuit, 3 cones [220g]
 - color #2 mandarin orange, 1 cone [10g]
 - color #12 dark khaki, 1 cone [15g]

Tools/Notions:

- 4.5mm (US 7) knitting needles or size necessary to achieve gauge

Finished measurements:

- width 37.5cm/14.76"
- length 150cm/59.06"

Gauge (10cm/4" square):

- stockinette stitch and stranded pattern stitch: 20 sts and 26 rows

Gauge may vary according to individual knitting style. Change needle size if necessary to achieve gauge. Alternatively, rework pattern with your own gauge measurements.

Knitting Tips

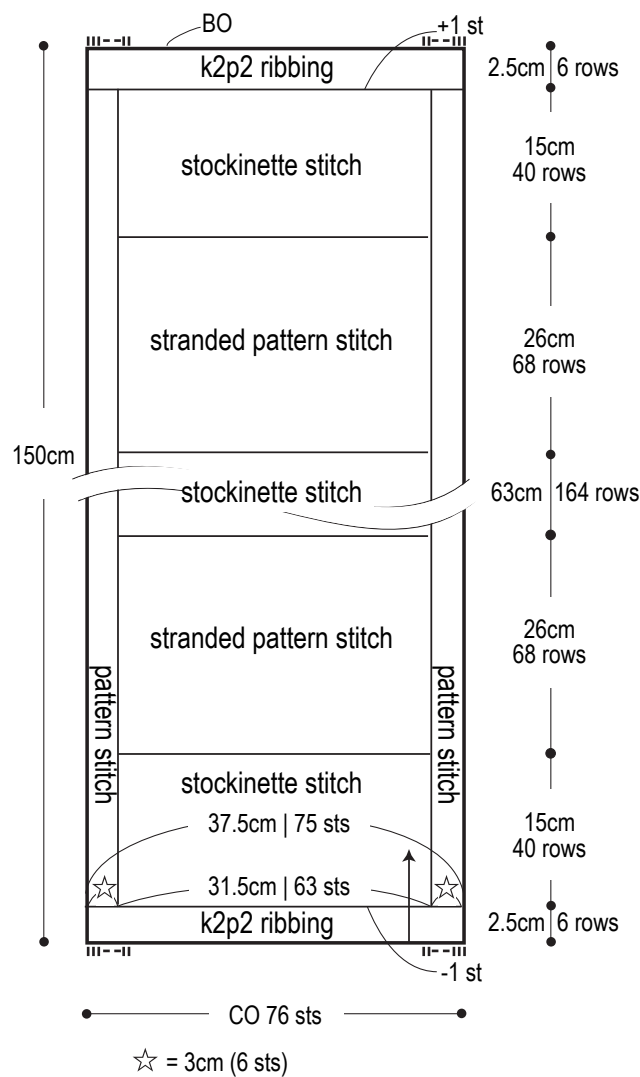
※Entire shawl knit with 2 strands of yarn held together.

Shawl: Cast on with long-tail cast-on method, and work in k2p2 ribbing. Continue in stockinette stitch, keeping 6 stitches on each edge in pattern stitch as a border. Work stranded pattern section, then stockinette, then a second section in the stranded pattern. Work in k2p2 ribbing, then bind off in pattern.

Abbreviations:

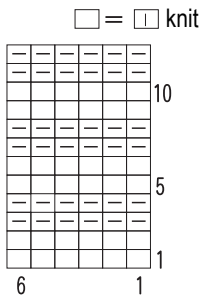
BO = bind off
CO = cast on

Back & front (4.5mm needles)



- = color #1 biscuit
- = color #2 mandarin orange
- = color #12 dark khaki

Pattern stitch (4.5mm needles)



Stranded pattern stitch (4.5mm needles)

