

25-13 Shawl



Suggested yarn:

- Pierrot Yarns Silk Rayon [79% rayon, 21% silk; 170 yds/155m per 1.41 oz./40g skein]; color #14, 4 skeins [200g] - *discontinued; please choose appropriate substitute*

Tools/Notions:

- 3.0mm (approx. US C or D) crochet hook or size necessary to achieve gauge

Finished measurements:

- width 40cm/15.75"
- length 165cm/64.96"

Gauge (10cm/4" square):

- pattern stitch: 23.5 sts and 11 rows

Gauge may vary according to individual crochet style. Change hook size if necessary to achieve gauge. Alternatively, rework pattern with your own gauge measurements.

Crochet Tips

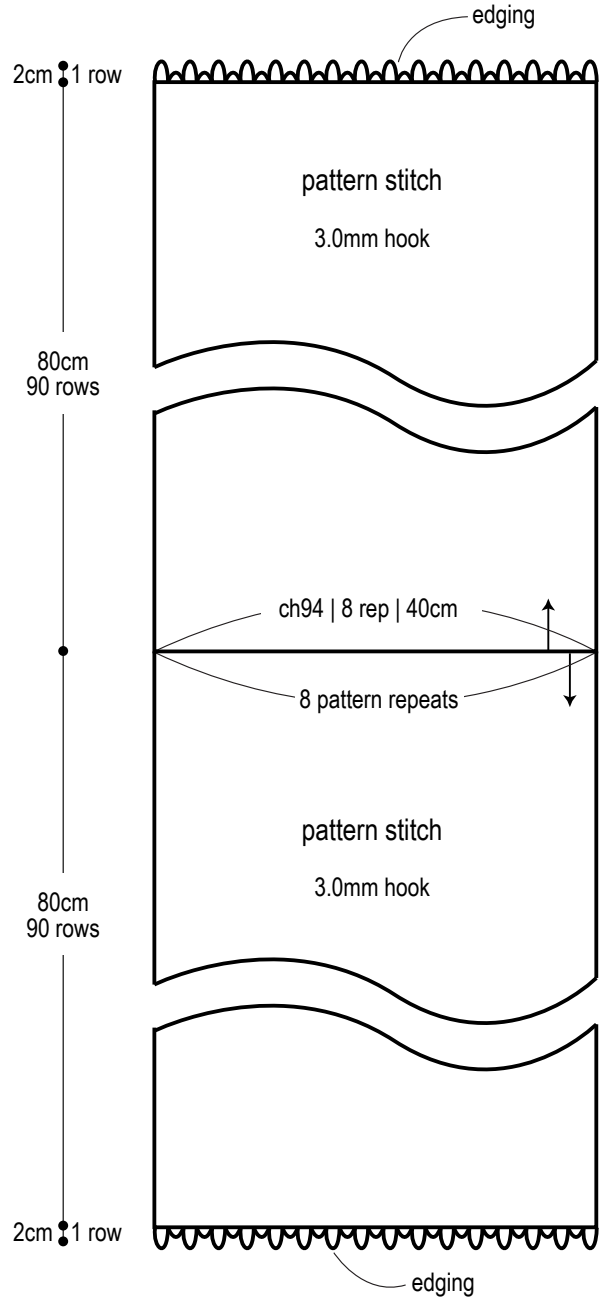
Chain to begin. Working from center of shawl outward, begin to crochet. Work in pattern stitch according to chart. Continue by working 1 row of edging, then cut yarn. Join yarn at foundation chain, working into 8 pattern repeats across. Work second half of shawl in pattern stitch. Work 1 row of edging just like at the first end.

Abbreviations:

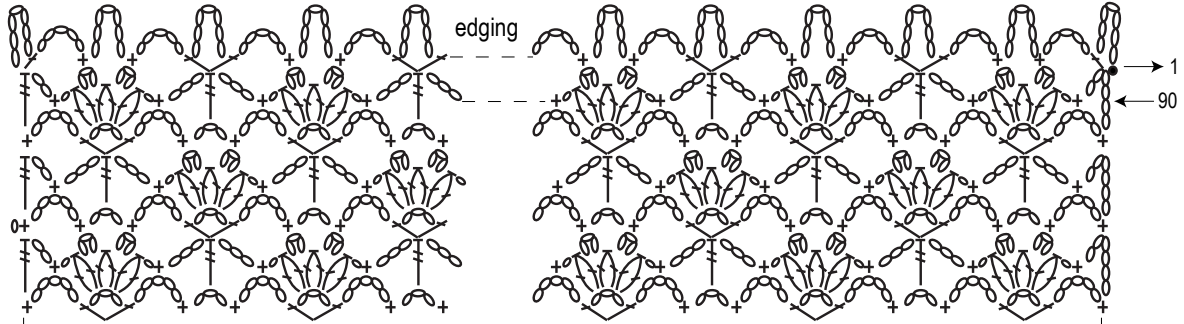
ch = chain

rep = pattern repeat(s)

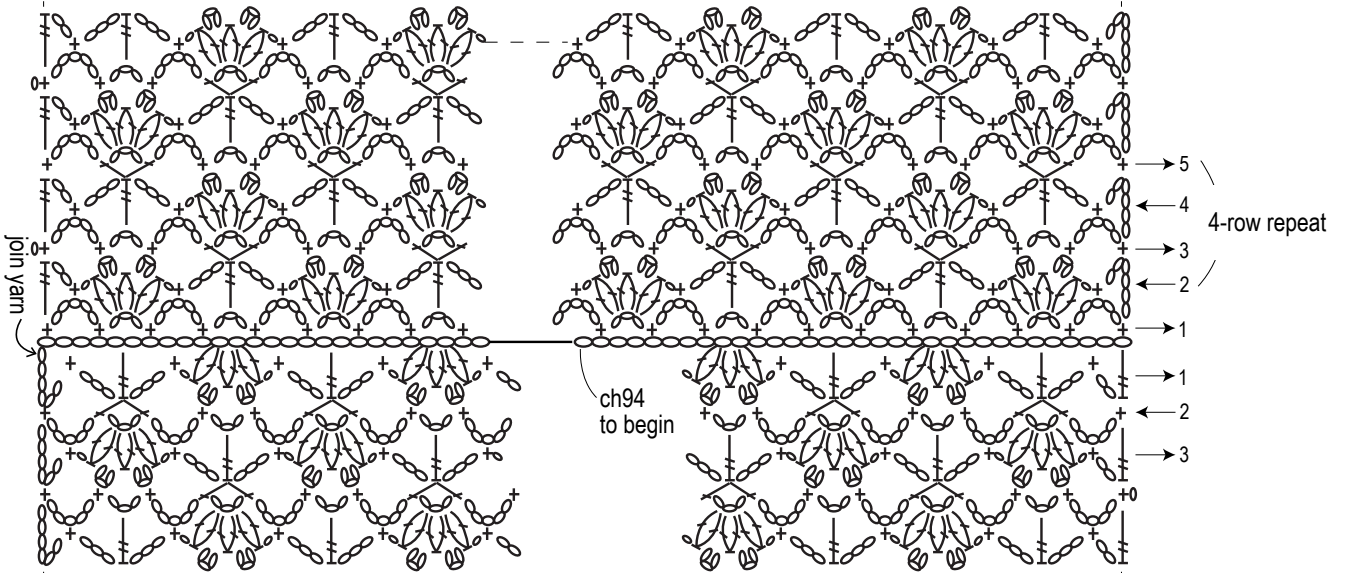
Shawl



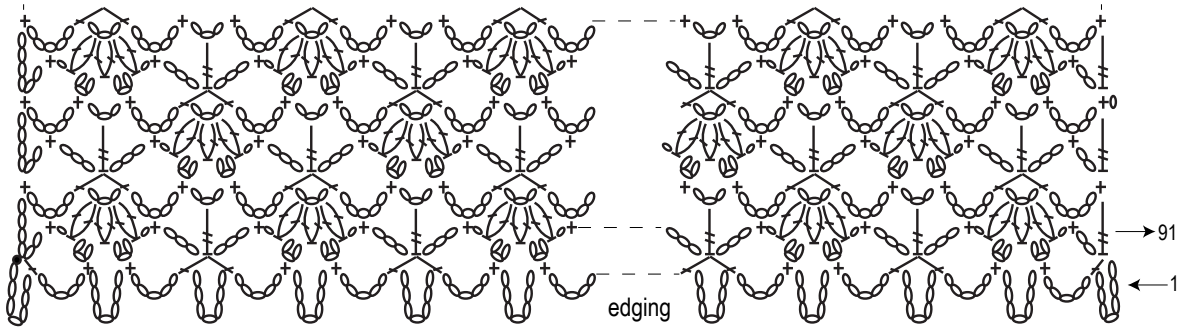
Pattern stitch & edging



pattern stitch



pattern stitch



edging