

211s-18 Amian Eco Bag



Suggested yarn:

- Pierrot Yarns Amian [100% Japanese paper; 94 yds/86m per 1.41 oz./40g skein]; color #23 poppy red, 3 skeins [110g]

Tools/Notions:

- 3.0mm (approx. US C or D) crochet hook or size necessary to achieve gauge

Finished measurements:

- mouth of bag (circumference) 66cm/25.98"
- depth 22cm/8.66"

Gauge (10cm/4" square):

- single crochet (US): 19 sts and 19 rows

Gauge may vary according to individual crochet style. Change hook size if necessary to achieve gauge. Alternatively, rework pattern with your own gauge measurements.

Crochet Tips

Bottom: Chain to begin. Work in single crochet (US), increasing as shown.

Sides: Work 29 rounds of single crochet (US). Continue working in pattern stitch, then work in single crochet (US) again. Work crab stitch edging.

Finishing: Chain to begin handle. Work in double crochet (US), then work a round of slip stitch around entire outer edge of handle. Sew handles to body of bag where indicated.

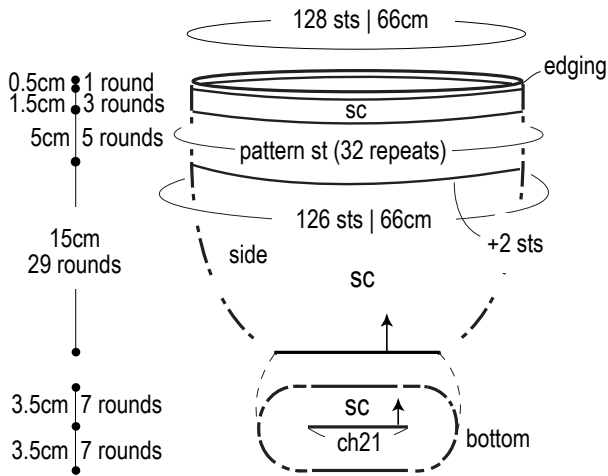
Abbreviations:

ch = chain

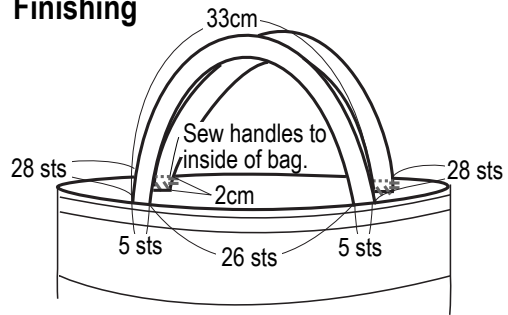
dc = double crochet (US)

sc = single crochet (US)

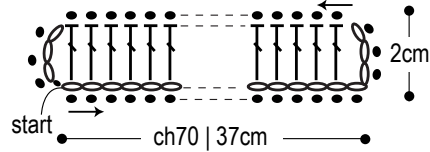
Bag (3.0mm hook)



Finishing



Handle (make 2; 3.0mm hook)



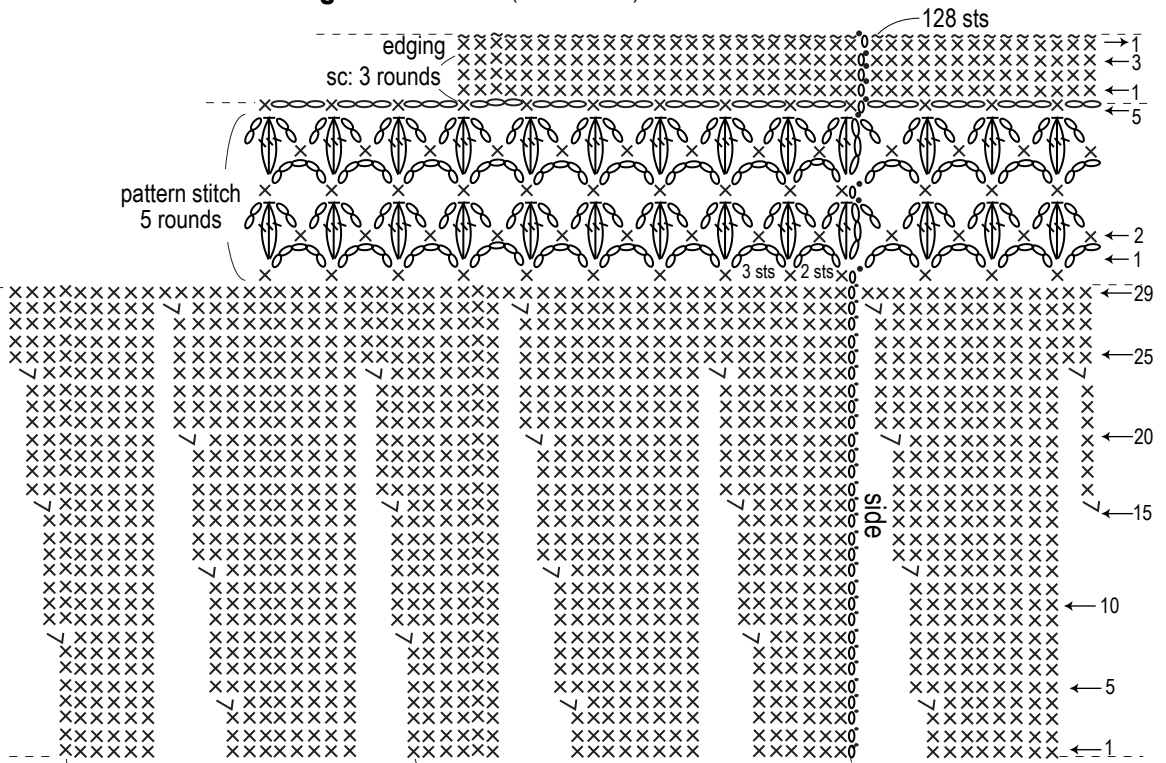
◁ = join yarn

◀ = cut yarn

Bag instructions (3.0mm hook)

Sides

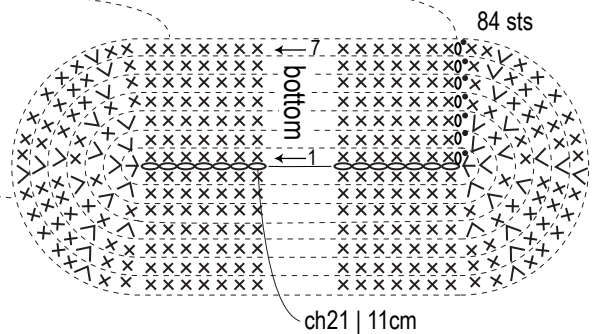
round #	st count	instructions
1	128 sts	edging
1-3	128 sts	work even
2-5	32 repeats	work even
1	32 repeats	+2 sts
29	126 sts	work even
28	126 sts	+6 sts
27	120 sts	work even
26	120 sts	work even
25	120 sts	work even
24	120 sts	+6 sts
23	114 sts	work even
22	114 sts	work even
21	114 sts	work even
20	114 sts	+6 sts
19	108 sts	work even
18	108 sts	work even
17	108 sts	work even
16	108 sts	+6 sts
15	102 sts	work even
14	102 sts	work even
13	102 sts	work even
12	102 sts	+6 sts
11	96 sts	work even
10	96 sts	work even
9	96 sts	work even
8	96 sts	+6 sts
7	90 sts	work even
6	90 sts	work even
5	90 sts	+6 sts
4	90 sts	work even
3	84 sts	work even
2	84 sts	work even
1	84 sts	work even



Bottom

round #	st count	instructions
7	84 sts	
6	78 sts	
5	72 sts	
4	66 sts	+6 sts
3	60 sts	
2	54 sts	
1	48 sts	

ch21 to begin



x = crab stitch
 ⌘ = 3-dc cluster stitch
 ↵ = 3sc into same stitch