

211w-15 Noble Silk Shawl



Suggested yarn:

- Pierrot Yarns Noble Silk [100% silk; 159 yds/145m per 1.41 oz./40g skein]; color #05 deep navy, 9 skeins [350g]

Tools/Notions:

- 2.5mm (approx. US B or C) crochet hook or size necessary to achieve gauge

Finished measurements:

- width 48cm/18.90"
- length 148cm/58.27"

Gauge (10cm/4" square):

- pattern stitch: 27 sts and 11.5 rows

Gauge may vary according to individual crochet style. Change hook size if necessary to achieve gauge. Alternatively, rework pattern with your own gauge measurements.

Crochet Tips

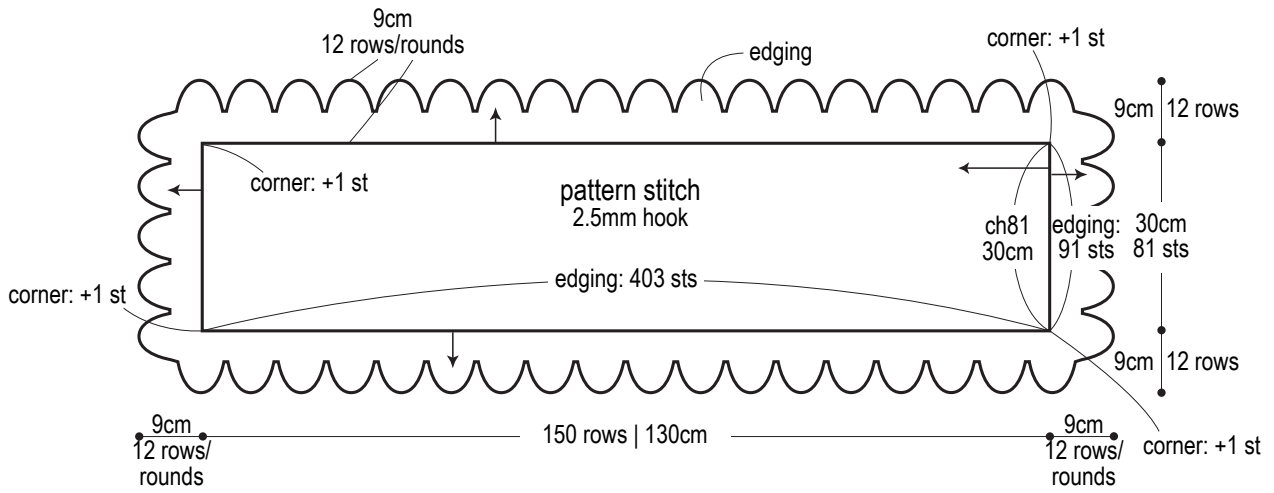
Body: ch81 (*not* including any chains needed for turning post), then work 150 rows in pattern stitch.

Edging: Referring to schematic, work rounds 1-7. Starting from row 8, join yarn where indicated and work pineapple edging back and forth in rows.

Abbreviations:

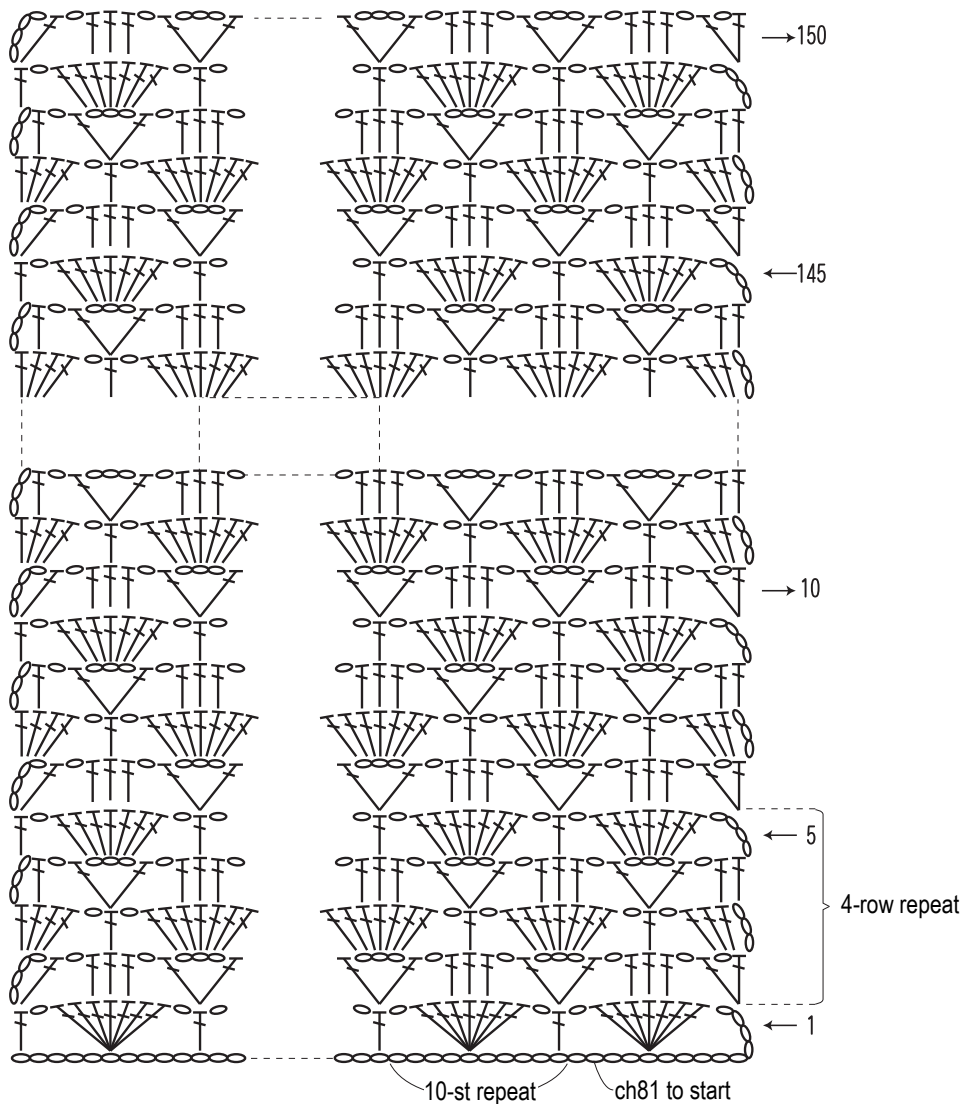
ch = chain

Shawl

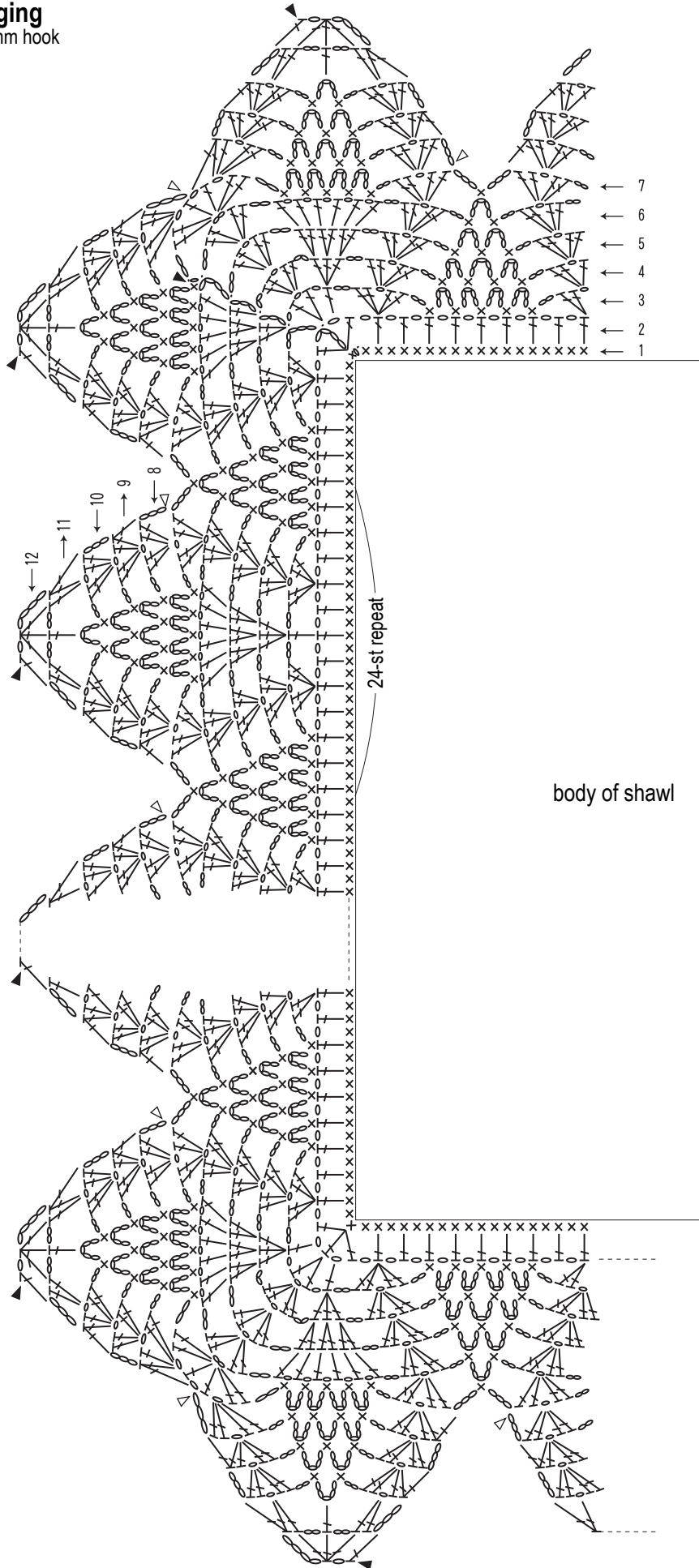


※Note: edging is worked in rounds for 7 rounds, then rows for rows 8-12.

Pattern stitch: body of shawl 2.5mm hook



Edging
2.5mm hook



△ = join yarn
▲ = cut yarn

body of shawl

24-st repeat