

# 211F-02 Cutie Mohair Triangular Shawl



## Suggested yarn:

- Pierrot Yarns Cutie Mohair [30% nylon, 28% mohair, 28% acrylic, 14% superwash wool; 339 yds/310m per 0.88 oz./25g skein];
  - color #29 light beige, 5 skeins [110g]
  - color #33 lavender, 5 skeins [110g]

## Tools/Notions:

- 3.0mm (approx. US C or D) crochet hook or size necessary to achieve gauge

## Finished measurements:

- Please refer to schematics.

## Gauge (10cm/4" square):

- pattern stitch: 19.5 sts and 9.5 rows

*Gauge may vary according to individual crochet style. Change hook size if necessary to achieve gauge. Alternatively, rework pattern with your own gauge measurements.*

## Crochet Tips

※Entire shawl worked with 2 strands of yarn held together.

**Body:** ch1, then crochet in pattern stitch according to schematic, increasing at left and right of center.

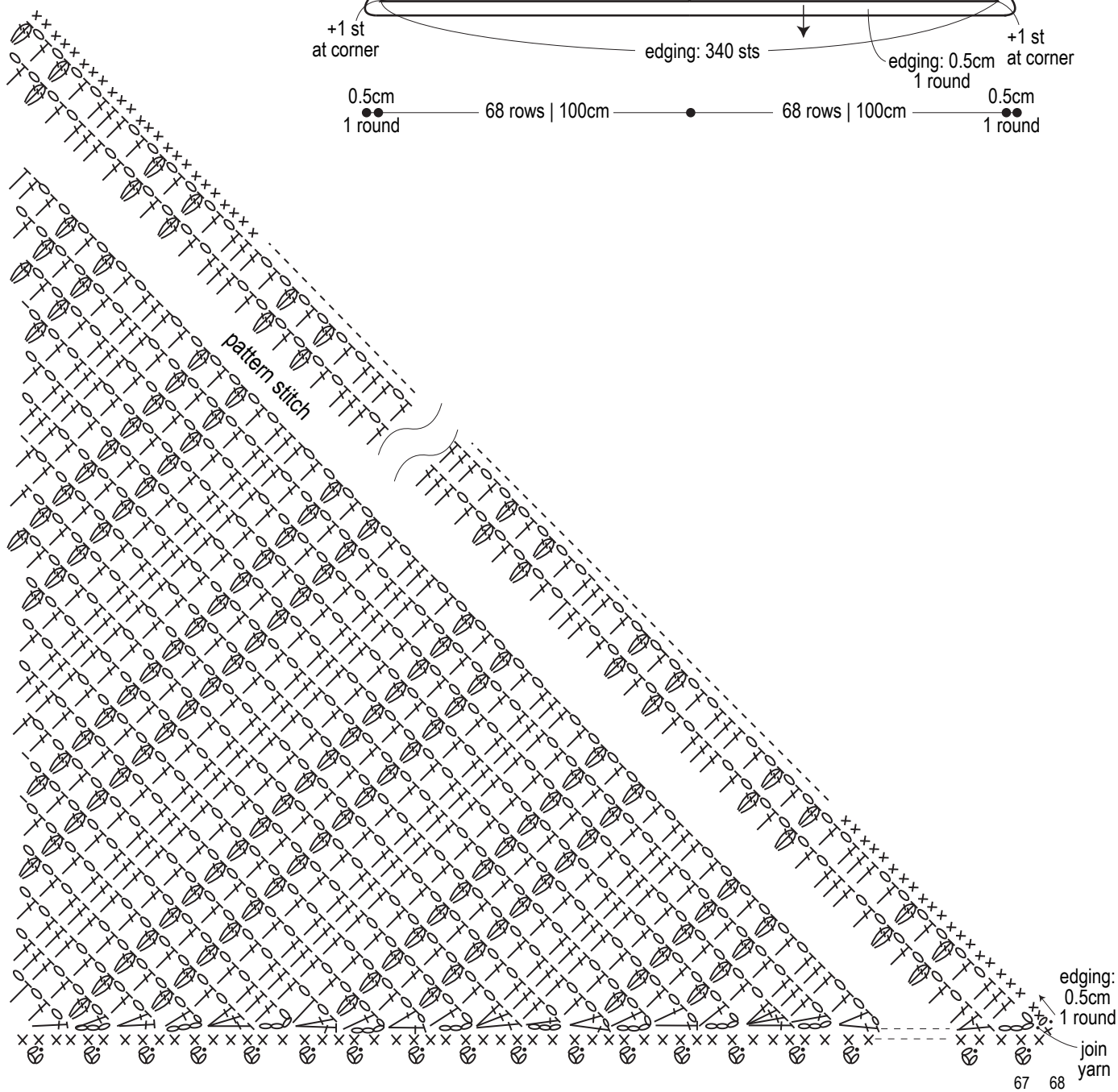
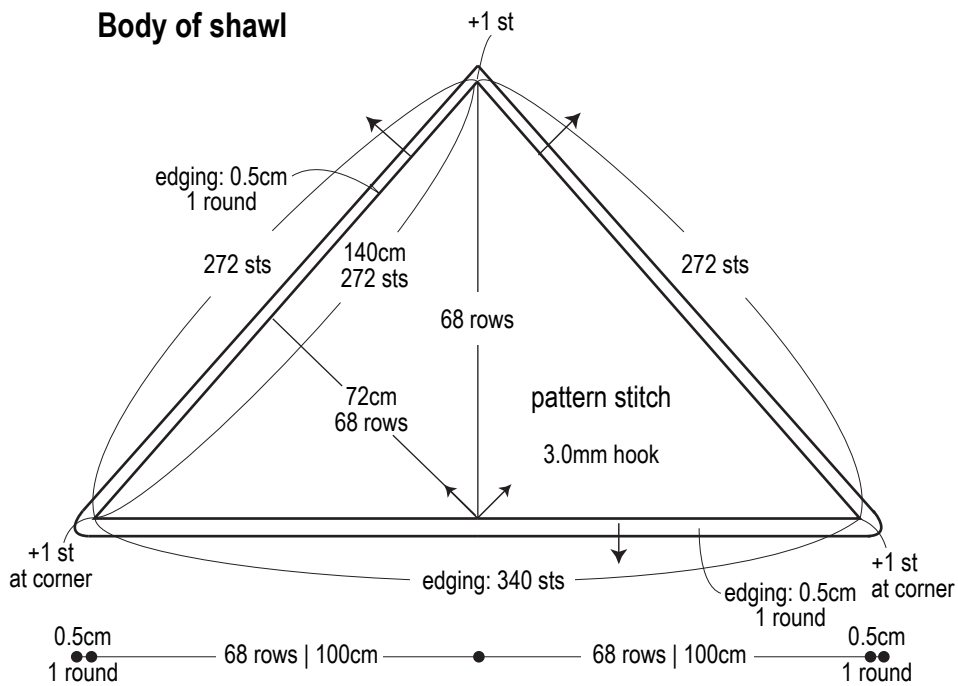
**Finishing:** Work 1 round of single crochet (US) edging around entire outer edge of shawl. Attach fringe to two of the sides of the shawl.

## Abbreviations:

ch = chain

sc = single crochet (US)

# Body of shawl



# Fringe

attach one at center

※To make fringe, take 3 strands of both colors (for a total of 6 strands) and cut to 54cm/21.26" length. Fold in half and tie to edge of shawl.

Attach fringe in 56 places.

Attach fringe in 56 places.

