

211w-29 Cowichan-style Geometric Vest



Suggested yarn:

- Pierrot Yarns Soft Merino Bulky [100% merino wool; 44 yds/40m per 1.41 oz./40g skein];
 - color #3 brown, 12 skeins [480g]
 - color #5 black, 2 skeins [80g]
- Pierrot Yarns Soft Merino [100% merino wool; 104 yds/95m per 1.41 oz./40g skein]; color #8 wine red, 3 skeins [120g]

Tools/Notions:

- 8.0mm (US 11) and 10.0mm (US 15) knitting needles or sizes necessary to achieve gauge
- 4 buttons (30mm/1.18")

Finished measurements:

- chest 99cm/38.98"
- cross back width 45cm/17.72"
- length 64cm/25.20"

Gauge (10cm/4" square):

- stranded pattern stitch: 10 sts and 12.5 rows

Gauge may vary according to individual knitting style. Change needle size if necessary to achieve gauge. Alternatively, rework pattern with your own gauge measurements.

Knitting Tips

✧When knitting with Soft Merino Bulky, hold yarn doubled. When working with Soft Merino, hold yarn tripled.

Body: Cast on with long-tail cast-on method. Work in k1p1 ribbing and pattern stitch. For front body, work front band and collar (in garter stitch) at the same time as the body. Work buttonholes into left button band while working band. The pattern stitch is Cowichan-style stranded knitting. Pick up stitches along back neckline to work back of collar.

Finishing: Seam shoulders with slip stitch. Seam sides with mattress stitch. Seam front and back collar together where marked using stitches-to-rows seam.

Abbreviations:

BO = bind off

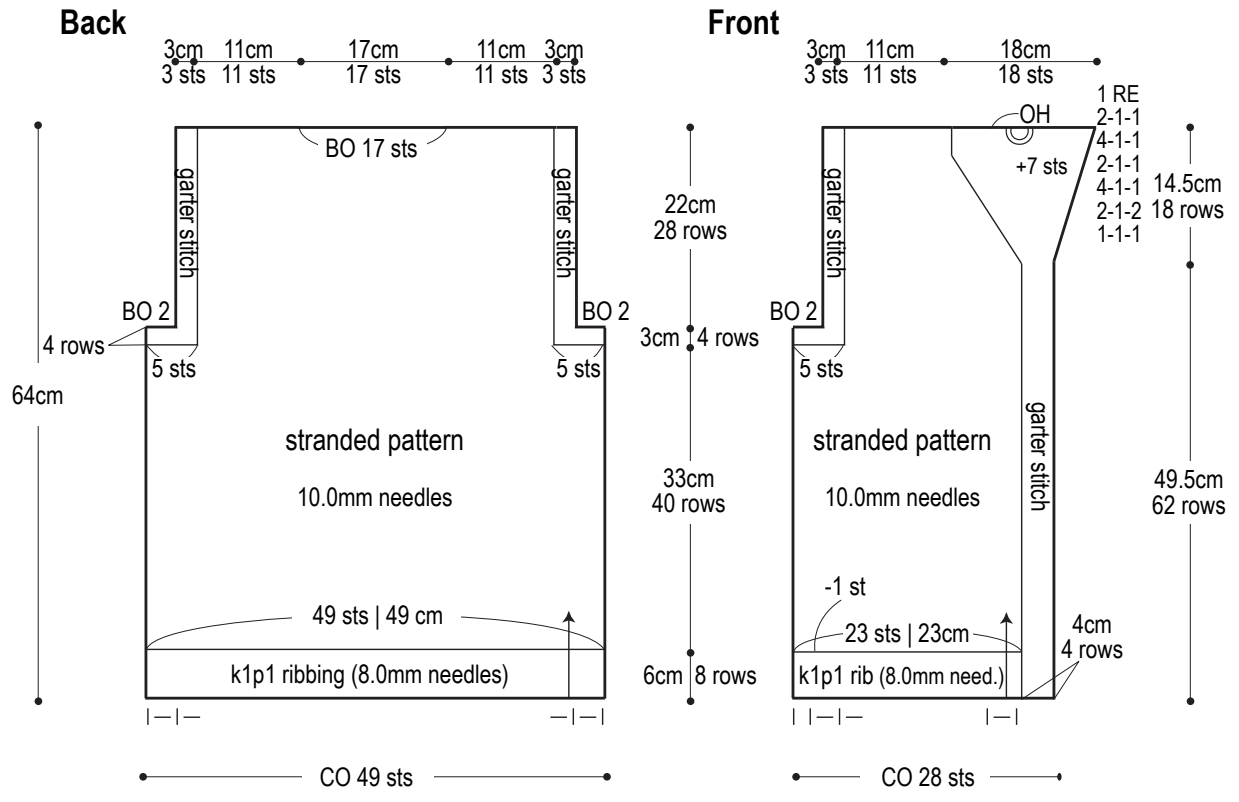
CO = cast on

OH = on hold (i.e., place on stitch holder)

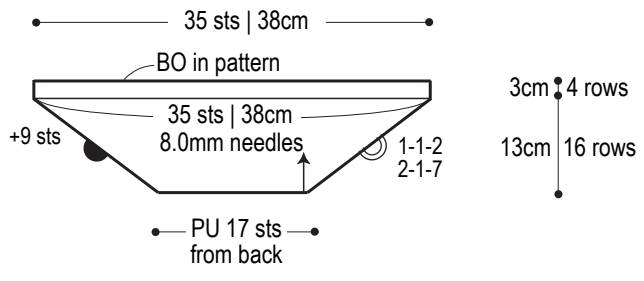
PU = pick up

RE = row(s) even

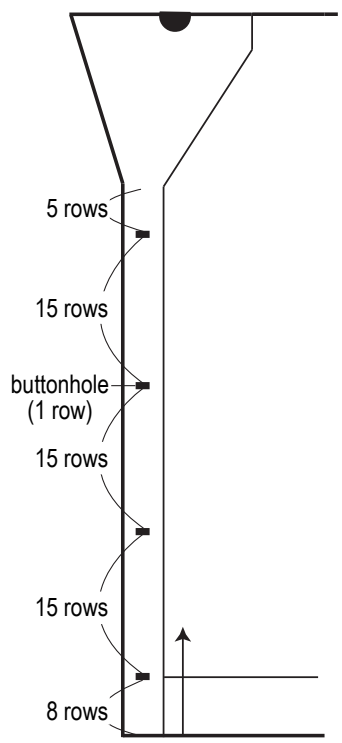
= rows-stitches-times



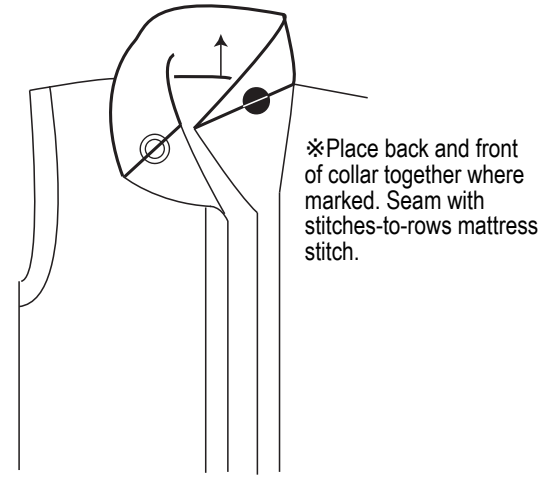
Back collar (garter stitch)



Buttonholes



How to seam collar

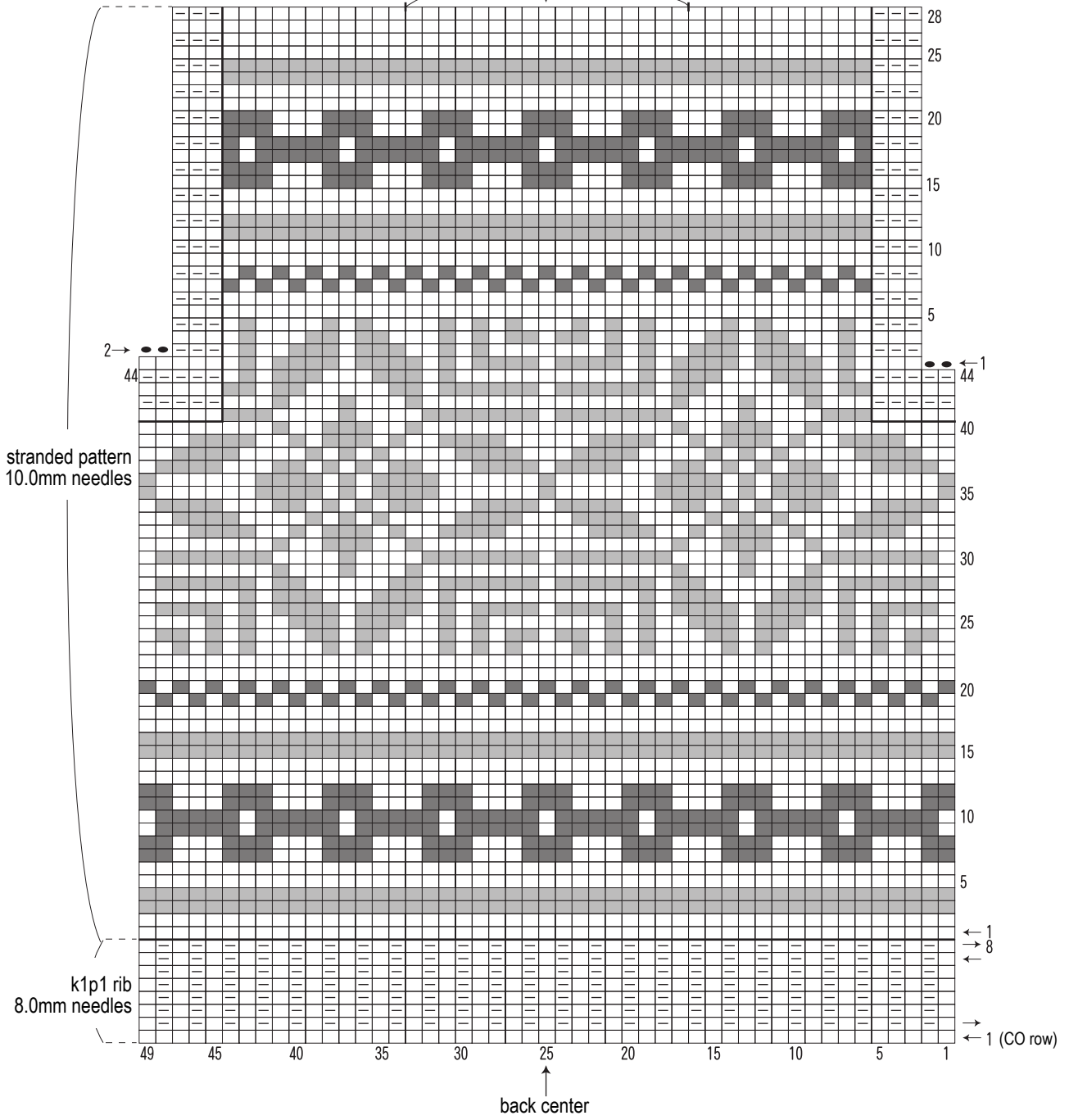


Back

center of back collar

BO 17 sts

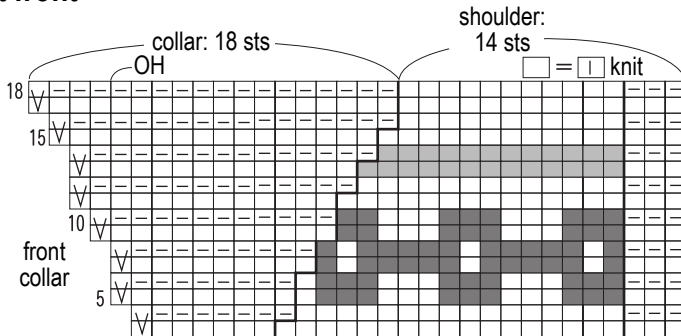
□ = □ knit



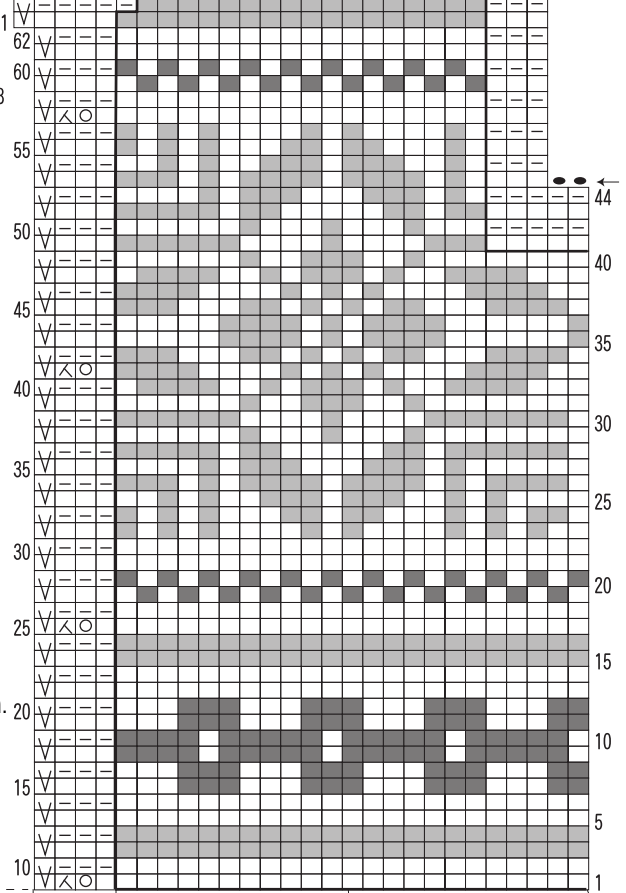
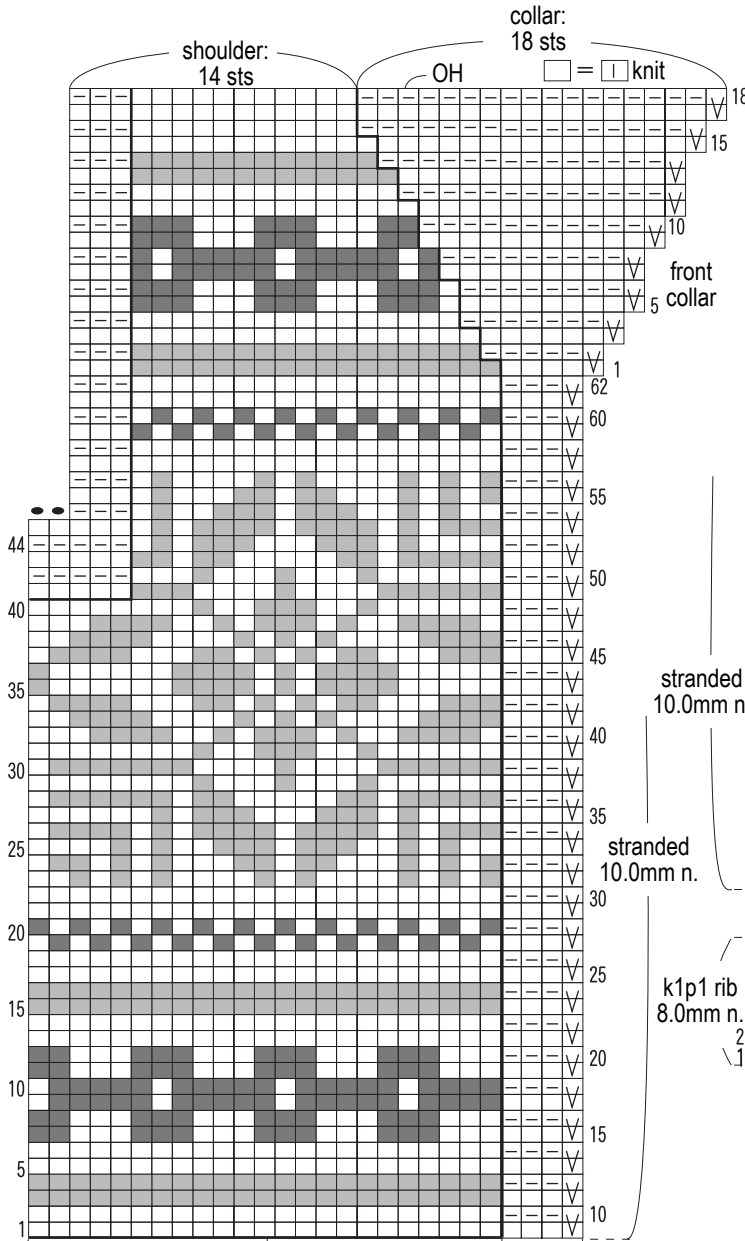
color sequence

- = Soft Merino Bulky #5 black - 2 strands
- = Soft Merino #8 wine red - 3 strands
- = Soft Merino Bulky #3 brown - 2 strands

Left front



Right front



stranded 10.0mm n.

stranded 10.0mm n.

k1p1 rib 8.0mm n.

k1p1 rib 8.0mm needles

slip stitch

- color sequence
- = Soft Merino Bulky #5 black - 2 strands
 - = Soft Merino #8 wine red - 3 strands
 - = Soft Merino Bulky #3 brown - 2 strands

