

24-25-47 Hooded Baby Cardigan with Cables



Suggested yarn:

- Pierrot Yarns Lamb Baby [100% wool; 131 yds/120m per 1.41 oz./40g skein]; color #2703 yellow, 5 skeins [200g] - *discontinued; please choose appropriate substitute*

Tools/Notions:

- 3.6mm (approx. US 4 or 5) knitting needles or size necessary to achieve gauge
- 4 buttons (18mm/0.71")

Finished measurements:

- chest 64cm/25.20"
- cross back width 26cm/10.24"
- length 35cm/13.78"
- sleeve length 23cm/9.06"

Gauge (10cm/4" square):

- pattern stitch: 22 sts and 33 rows

Gauge may vary according to individual knitting style. Change needle size if necessary to achieve gauge. Alternatively, rework pattern with your own gauge measurements.

Knitting Tips

Body: Cast on with long-tail cast-on method and work 8 rows of k1p1 ribbing. Work in stockinette stitch and pattern stitch as shown on schematic. Work decreases at side edges; bind off stitches for armscye. When finished, leave stitches on stitch holder, marking place where collar will end with waste yarn. Work front placket in k1p1 ribbing at the same time as front body.

Sleeve: Begin as for body. Work increases at each edge of sleeve using lifted increase.

Finishing: Seam shoulders with three-needle bind-off. Pick up stitches from stitches on hold at front and back neckline and work hood. Bind off hood at center with three-needle bind-off. Seam sleeve to body with stitches-to-rows seam. Seam sides and sleeve undersides with mattress stitch. Make pompom and attach to hood where indicated.

Abbreviations:

BO = bind off

CO = cast on

OH = on hold (i.e., place stitches on stitch holder)

PU = pick up

RE = row(s) even

= rows-stitches-times

Diagram illustrating the pattern stitch for the neckband, showing dimensions and stitch counts:

- Top width segments: 7cm (20 sts), 12cm (33 sts), 7cm (20 sts).
- Height: 35cm.
- Left side: BO, -10 sts.
- Right side: 3cm (8 sts), 4 RE 4-1-2 6-18.
- Bottom: k1p1 ribbing CO 109 sts.
- Center: pattern stitch, mark neckline.
- Bottom trapezoid: 89 sts | 32cm, 3.6mm needles, 109 sts | 38cm.

Diagram of the front panels of a cardigan, showing the Right Front (R front) and Left Front (L front). The diagram includes measurements for width (7cm, 5cm, 2cm) and height (20 sts, 14 sts, 6 sts) for the upper sections. The R front is marked with 'OH' (One Half) and 'BO' (Bound Off). The L front is marked with 'OH' and 'BO'. The diagram also shows the 'mark neckline', 'pattern st', 'R front', 'L front', '3.6mm needles', and 'k1p1 ribbing'. The bottom section is labeled 'CO 58 sts'.

Finishing

Attach pompom (4cm in diameter). To make, wrap yarn 150 times around a 5cm-wide piece of cardboard.

3-needle bind-off

3-needle bind-off

long-tail cast-on

mattress stitch

mattress stitch

long-tail cast-on

BO in pattern

79 sts | 28cm

pattern stitch

+11 sts

4-1-14

3.6mm needles

51 sts | 18cm

3cm 10 rows

18cm 56 rows

2cm 8 rows

CO 51 sts

2cm 6 sts 83 sts | 30cm 2cm 6 sts

41 sts

pattern stitch

3.6mm needles

k1p1 ribbing

22.5cm 70 rows

7cm 22 rows

16 sts 1 st 16 sts

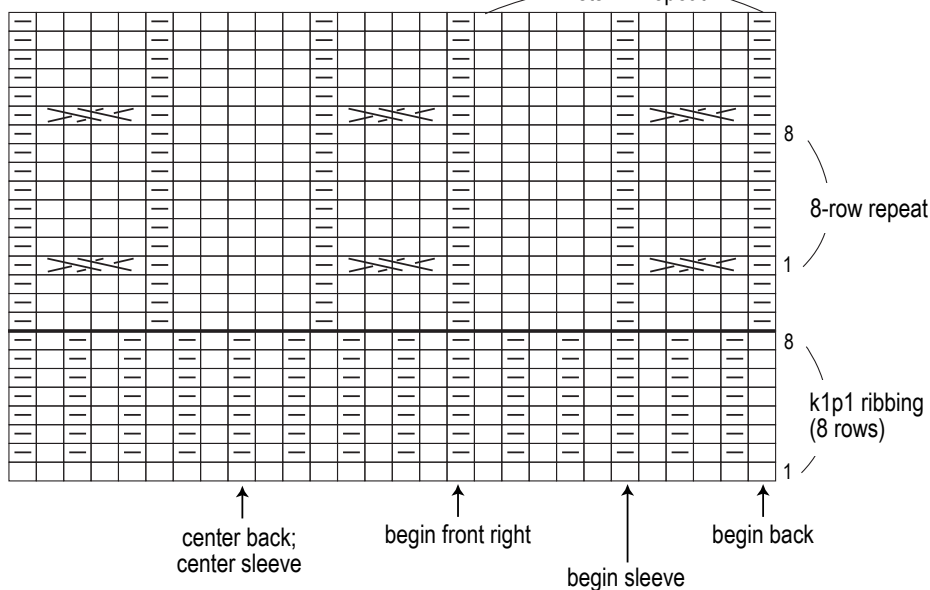
2-1-11 11 sts

PU 20 sts from front PU 33 sts from back PU 20 sts from front

Pattern stitch

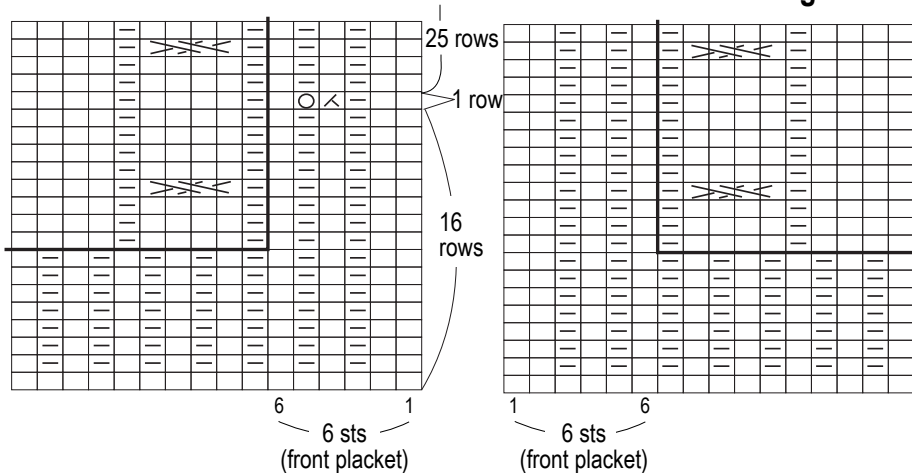
□ = □ knit

11 sts = 1 repeat



Left front

Right front



Hood: pattern stitch (including centered decreases at back of hood)

