

211s-16 3-way Convertible Shawl



Suggested yarn:

- Pierrot Yarns Casual Cotton [100% cotton; 120 yds/110m per 1.06 oz./30g skein]; color #08 frosty blue, 7 skeins [200g]

Tools/Notions:

- 3.0mm (approx. US C or D) crochet hook or size necessary to achieve gauge
- 8 buttons (22mm/0.87")

Finished measurements:

- width 46cm/18.11"
- length 132cm/51.97"

Gauge (10cm/4" square):

- pattern stitch: 26 sts and 10.5 rows

Gauge may vary according to individual crochet style. Change hook size if necessary to achieve gauge. Alternatively, rework pattern with your own gauge measurements.

Crochet Tips

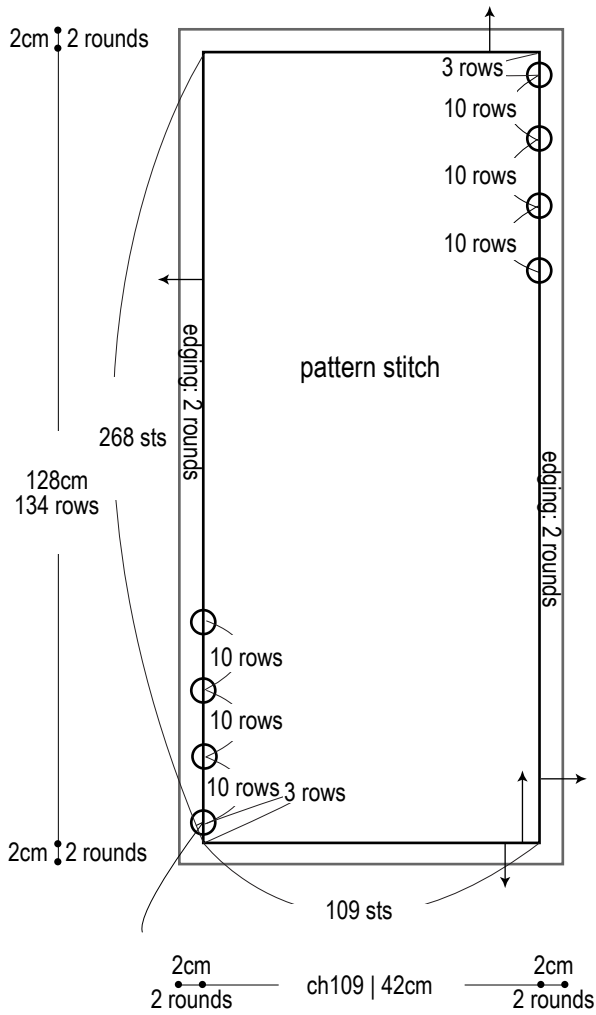
Body: Chain to create foundation row and work in pattern stitch. Work edging around outer edge.

Finishing: Fasten buttons where indicated. Use eyelets in pattern stitch as buttonholes.

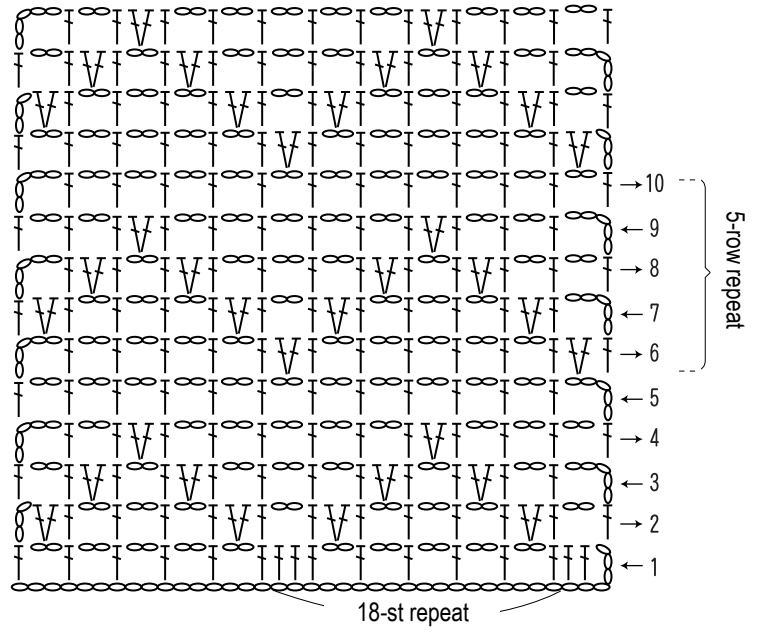
Abbreviations:

ch = chain

Body & edging (3.0mm hook)



Pattern stitch (3.0mm hook)



Edging (3.0mm hook)

