

211F-20 Twisted Turban Headband



Suggested yarn:

- version A:
 - Pierrot Yarns Junmo Namibuto2 [100% superwash wool; 79 yds/72m per 1.41 oz./40g skein];
 - color #32 dark brown, 1 skein [27g]
 - color #35 ash gray, 1 skein [27g]
- version B:
 - Filatura Botto Poala Smarties [77% wool, 13% silk, 10% nylon; 208 yds/190m per 1.76 oz./50g skein]; color #64 navy, 1 skein [25g]

Tools/Notions:

- version A: 6.3mm (approx. US 10½) knitting needles or size necessary to achieve gauge
- version B: 4.2mm (approx. US 6) knitting needles or size necessary to achieve gauge

Finished measurements:

- version A:
 - width 9cm/3.54"
 - head circumference 55cm/21.65"
- version B:
 - width 8cm/3.15"
 - head circumference 52.5cm/20.67"

Gauge (10cm/4" square):

- version A: pattern stitch (with 6.3mm needles): 19 sts and 19 rows
- version B: pattern stitch (with 4.2mm needles): 21 sts and 24 rows

Gauge may vary according to individual knitting style. Change needle size if necessary to achieve gauge. Alternatively, rework pattern with your own gauge measurements.

Knitting Tips

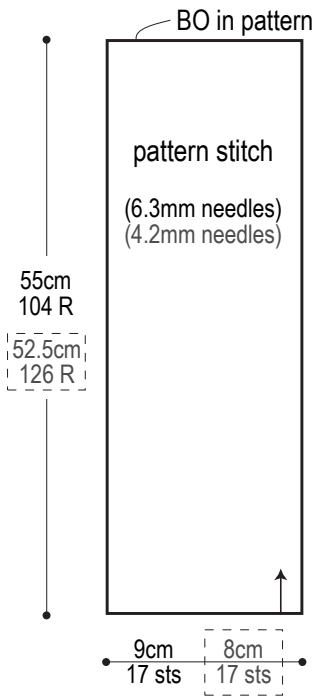
Cast on with long-tail cast-on method and work in pattern stitch. Bind off in pattern. Align first and last rows; seam with whipstitch.

※Both versions are worked with yarn held doubled.

Abbreviations:

BO = bind off
CO = cast on
R = row(s)

Turban



Version A

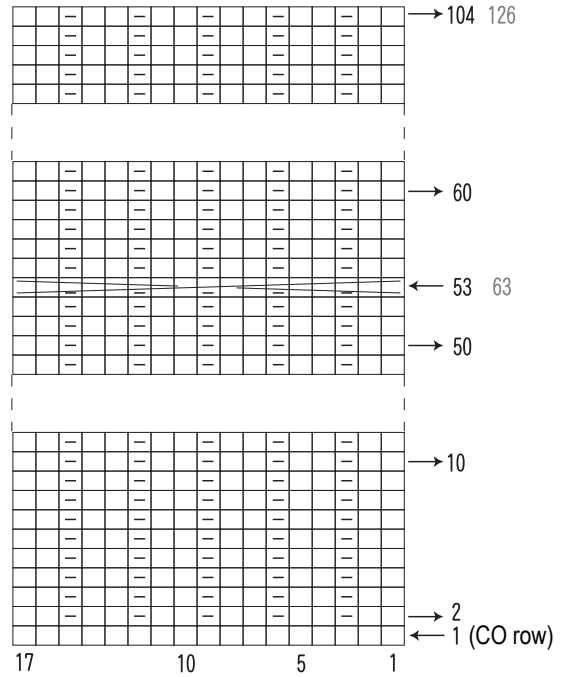
— = Junmo Namibuto2
(1 strand each of colors #32, 35)

Version B

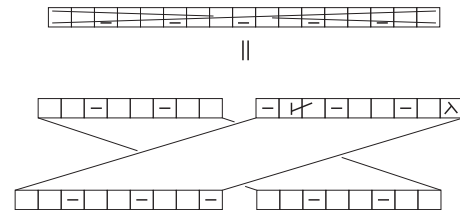
— = Smarties
(2 strands)

Pattern stitch

□ = □ knit stitch



Cable instructions



Finishing

Align both ends; seam with whipstitch.

