

amicomo8-15 Saratto UV Armwarmers & Bicycle Basket Cover



Suggested yarn:

- Pierrot Yarns Saratto UV [60% acrylic, 40% cotton; 79 yds/72m per 1.06 oz./30g skein];
 - bicycle basket cover: color #3 biscuit, 5 skeins [150g]
 - armwarmers: color #3 biscuit, 4 skeins [100g]

Tools/Notions:

- 3.9mm (approx. US 6) straight knitting needles or size necessary to achieve gauge
- 3.9mm (approx. US 6) and 4.2mm (approx. US 7) double-pointed knitting needles (or mini circular needles) or sizes necessary to achieve gauge
- 3.0mm (approx. US C or D) crochet hook or size necessary to achieve gauge

Finished measurements:

- bicycle basket cover:
 - width 45cm/17.72"
 - length 62cm/24.41"
- armwarmers
 - palm circumference 20cm/7.87"
 - length 51.5cm/20.28"

Gauge (10cm/4" square):

- pattern stitch A (with 3.9mm needles): 22 sts and 29 rows
- pattern stitch B (with 4.2mm needles): 21 sts and 25 rows
- stockinette stitch (with 4.2mm needles): 19 sts and 25 rows

Gauge may vary according to individual crochet and knitting style. Change hook/needle size if necessary to achieve gauge. Alternatively, rework pattern with your own gauge measurements.

Knitting & Crochet Tips

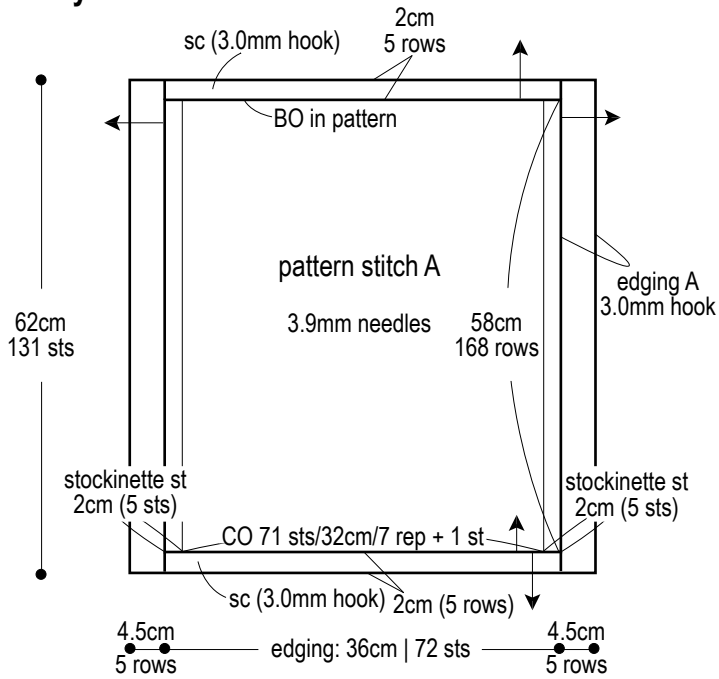
Bicycle basket cover: Cast on with long-tail cast-on method and work in pattern stitch A and stockinette stitch. When finished, bind off in pattern, then work 1 row of single crochet (US). Work single crochet into cast-on row. Work edging A along both sides. Crochet 4 cords and fasten to cover where indicated.

UV armwarmers: Cast on with long-tail cast-on method and work k1p1 ribbing in the round. Continue working in stockinette stitch, pattern stitch B, and k1p1 ribbing as shown in schematic. Work stitches for thumb in waste yarn. When finished, bind off in pattern. Remove waste yarn and pick up live stitches for thumb. Knit thumb in stockinette stitch in the round. Bind off in pattern when finished. Crochet edging B around cast-on and cast-off rounds. Reverse shaping for left arm.

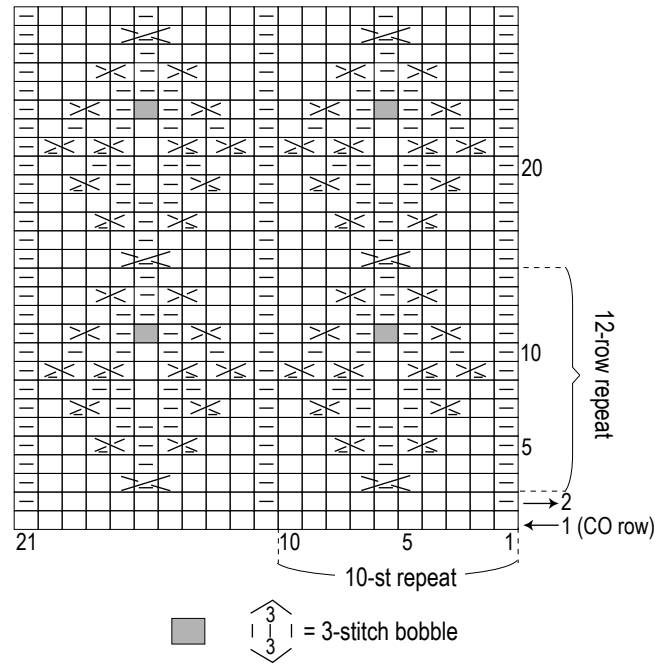
Abbreviations:

ch = chain
BO = bind off
CO = cast on
PU = pick up
RE = row(s) even
rep = repeat(s)
sc = single crochet (US)

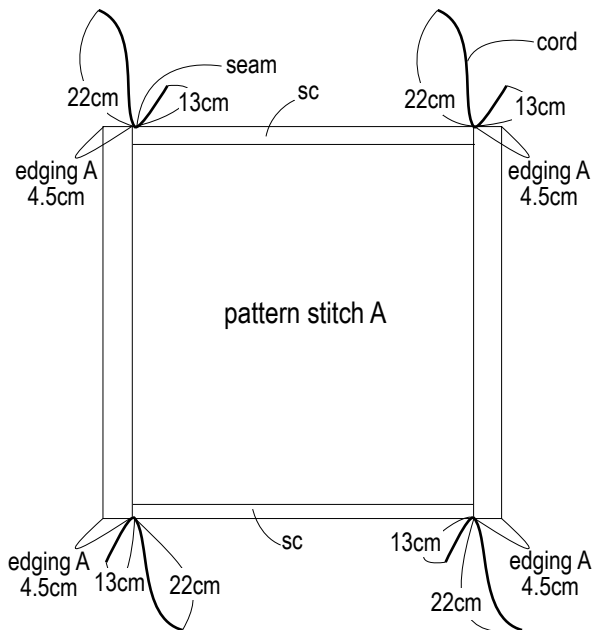
Bicycle basket cover



Pattern stitch A (3.9mm needles)

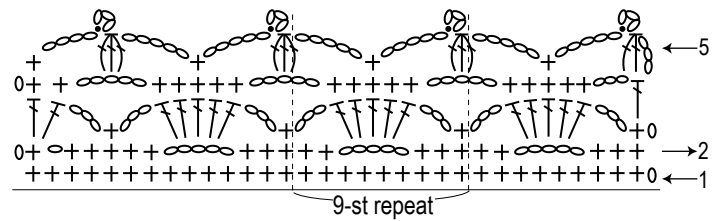


Finishing

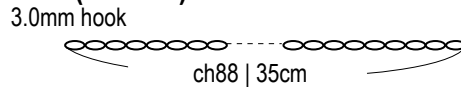


※ Adjust cord placement as needed to fit your bicycle basket.

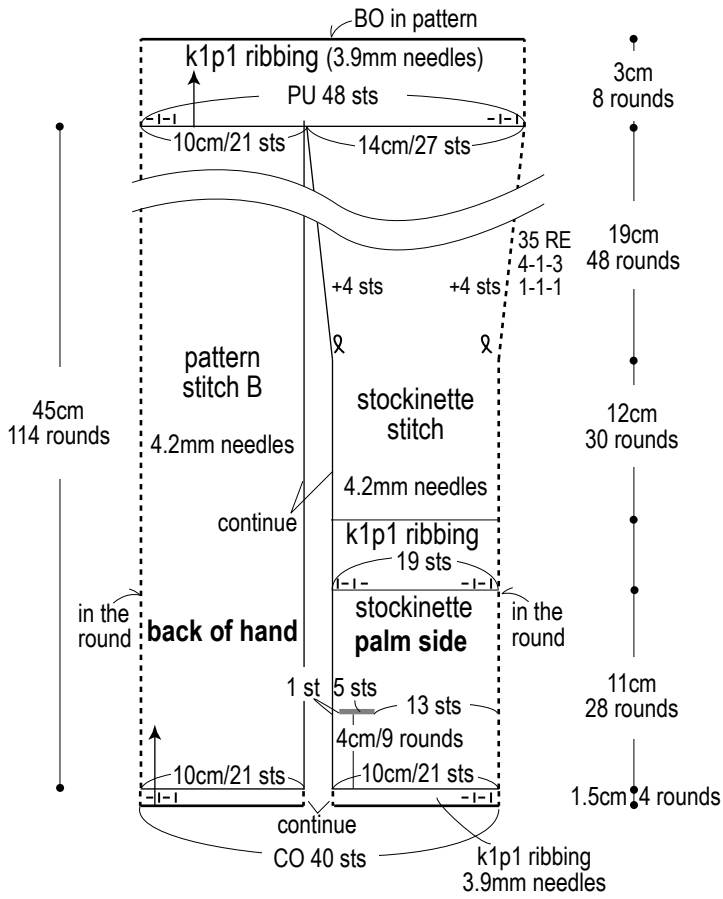
Edging A (3.0mm hook)



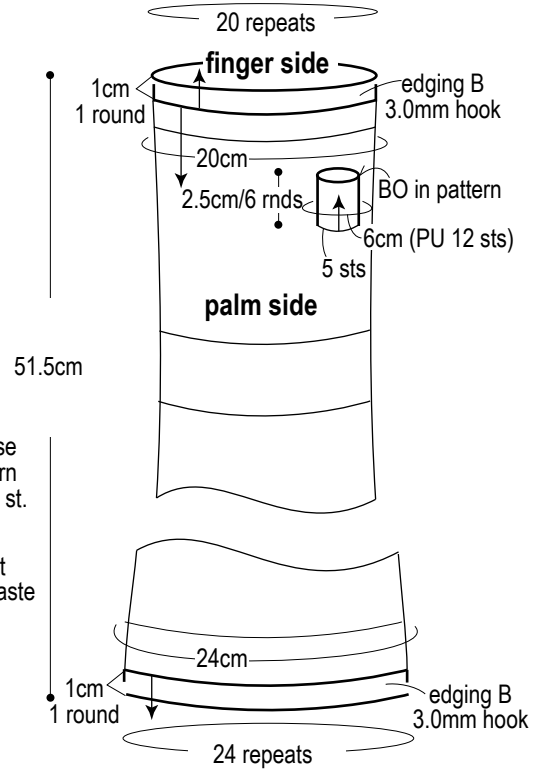
Ties (make 4)



UV Armwarmer (right arm)

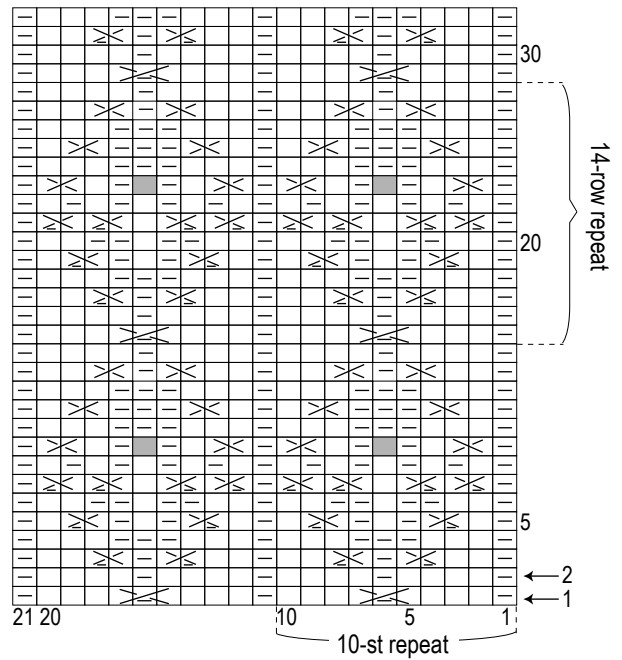


Finishing

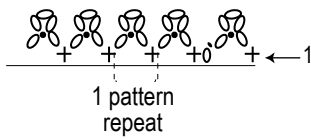


λ = lifted increase
 * Work lifted increase between purl in pattern stitch and stockinette st.
 — = thumb placement (work 5 sts on waste yarn)

Pattern stitch B (4.2mm needles) □ = [] knit stitch

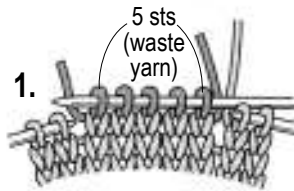


Edging B (3.0mm hook)



Thumb instructions

Knit in waste yarn.



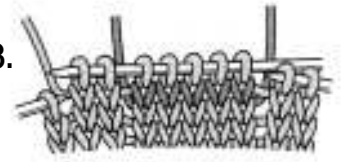
Knit thumb stitches with waste yarn where indicated on palm.

2.



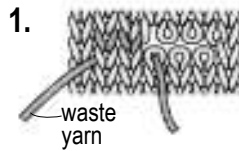
Move 5 sts knit with waste yarn back to left needle. Knit into those 5 sts with main yarn.

3.



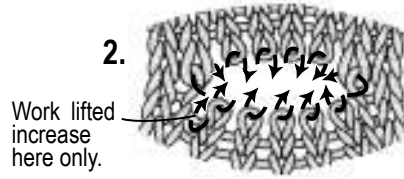
Continue knitting.

Pick up stitches to knit thumb.



Remove waste yarn.

2.



Stitches to pick up.

3.



Work lifted increase here only.

Pick up stitches with main yarn.