

# 210-64 Tape Slub Gilet



## Suggested yarn:

Pierrot Yarns Tape Slub [60% acrylic, 40% cotton; 142 yds/130m per 3.53 oz./100g cone]; color #287 dark olive brown, 4 cones [345g]

## Tools/Notions:

- 4.8mm (approx. US 8) knitting needles or size necessary to achieve gauge
- 4.0mm (US G) crochet hook or size necessary to achieve gauge

## Finished measurements:

- back width 38cm/14.96"
- length 35cm/13.78"

## Gauge (10cm/4" square):

pattern stitch: 15 sts and 22 rows

Gauge may vary according to individual knitting style. Change needle size if necessary to achieve gauge. Alternatively, rework pattern with your own gauge measurements.

## Knitting Tips

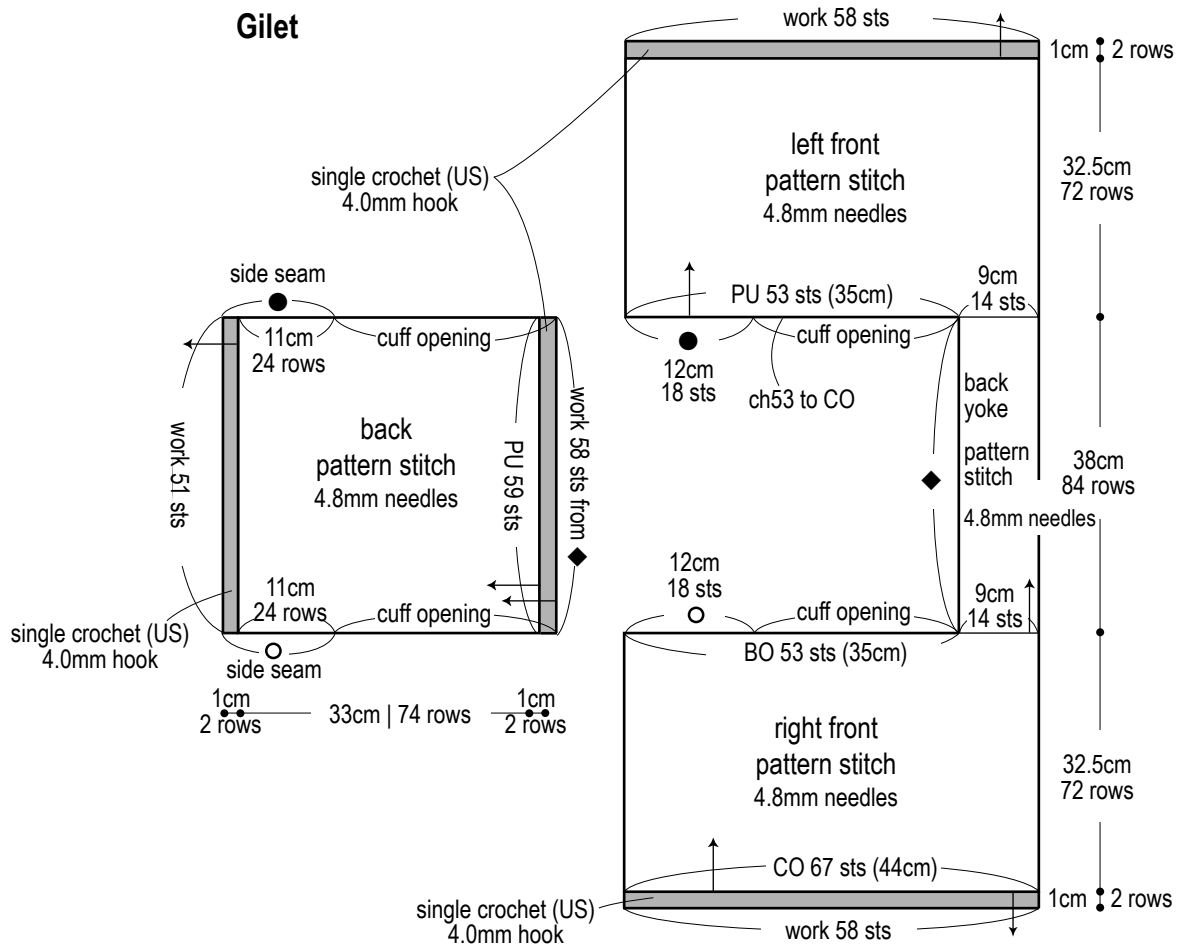
**Right & left fronts; back yoke:** Cast on with long-tail cast-on and knit right from in pattern stitch. Slip first 14 stitches; bind all remaining stitches off in pattern. Knit 84 rows for back yoke, then pick up stitches from crochet chain and work left front in pattern stitch. Work single crochet (US) edging on right and left fronts.

**Back:** Working stitches into back yoke; work in single crochet (US), pattern stitch, and single crochet. Seam sides with stitches-to-rows woven seam.

## Abbreviations:

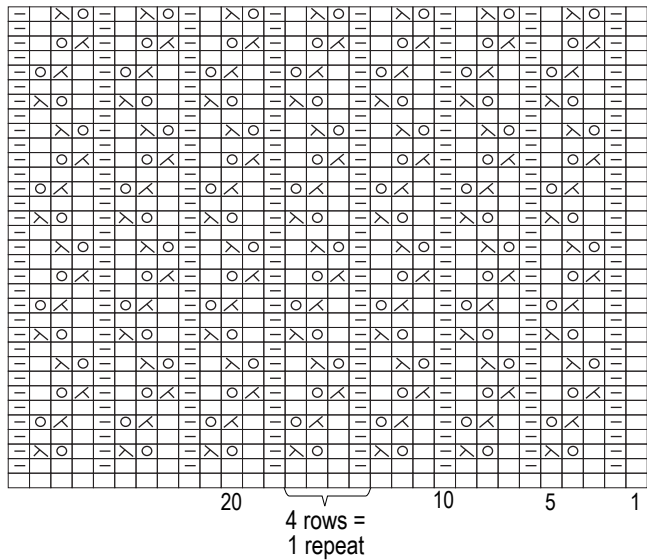
BO = bind off  
ch = chain  
CO = cast on  
PU = pick up  
sc = single crochet (US)

# Gilet



## Pattern stitch (4.8mm needles)

□ = □ knit



Single crochet (US); 4.0mm hook

