

211-11h Nagomi Cotton Vest



Suggested yarn:

- Pierrot Yarns Nagomi Cotton [100% cotton; 323 yds/295m per 3.53 oz./100g cone]; color #02 gentian, 2 cones [190g]

Tools/Notions:

- 3.0mm (approx. US C or D) crochet hook or size necessary to achieve gauge
- 2 buttons (21mm/0.83")

Finished measurements:

- bust 95cm/37.40"
- center back neck to cuff 27cm/10.63"
- length 48cm/18.90"

Gauge (10cm/4" square):

- pattern stitch A: 25 sts and 13 rows

Gauge may vary according to individual crochet style. Change hook size if necessary to achieve gauge. Alternatively, rework pattern with your own gauge measurements.

Crochet Tips

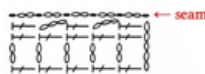
Body (front and back): Chain to create foundation row. Work back, right front, and left front in pattern stitch A according to schematics.

Finishing: Join shoulders with woven seam. Join sides with slip/chain seam (see below). Work edging in the round around cuffs. Work 3 rows of edging along neckline. Work hem in pattern stitch B, working buttonholes on both edges as you go. Continue to 1 row of edging at neckline, then attach buttons.

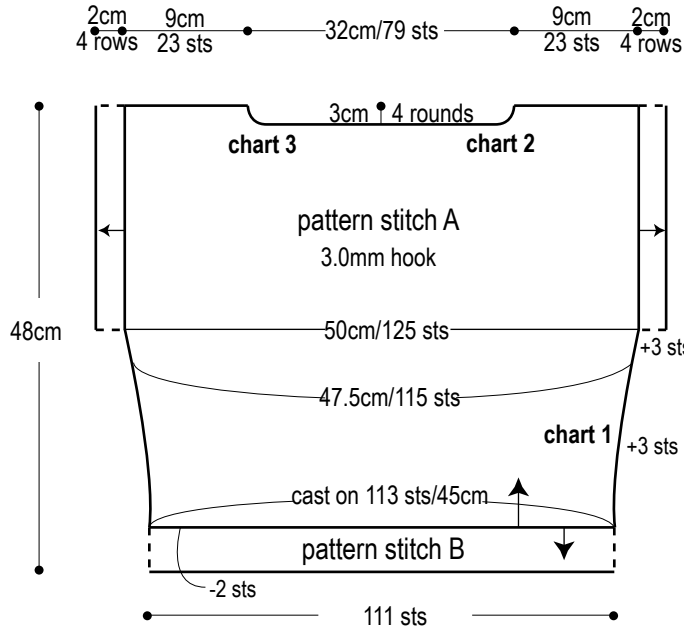
Abbreviations:

ch = chain

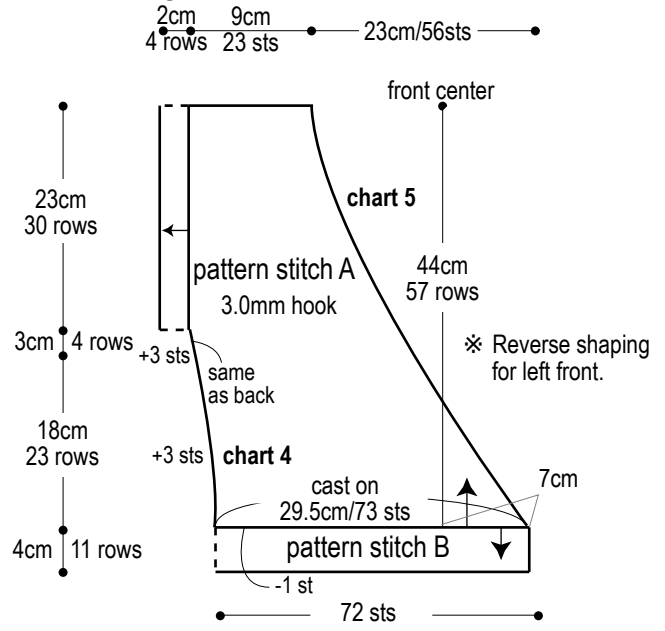
Slip/chain seam: essentially a slip stitch seam with chain stitches interspersed between slip stitches. Slip stitch through both layers of fabric. *ch2, sl st in top of next row*, continue from * to * until end. (Note: use ch2 only for double crochet (US). Use ch1 for hdc, ch2 for dc, ch3 for treble, and so on.)



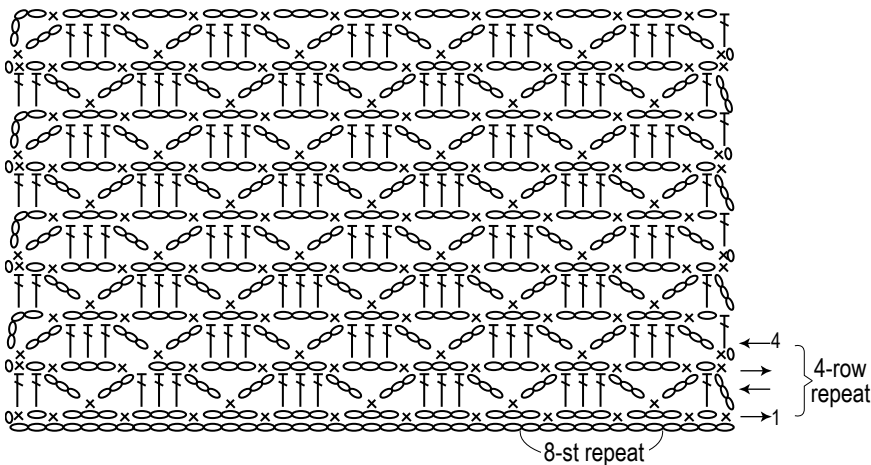
Back



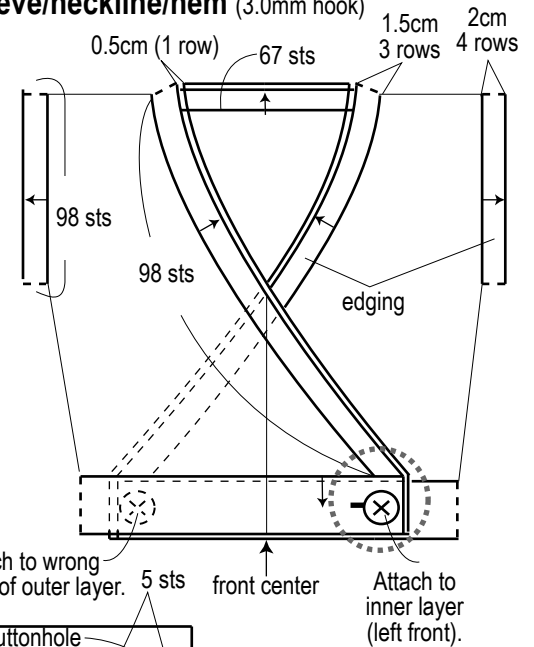
Right front



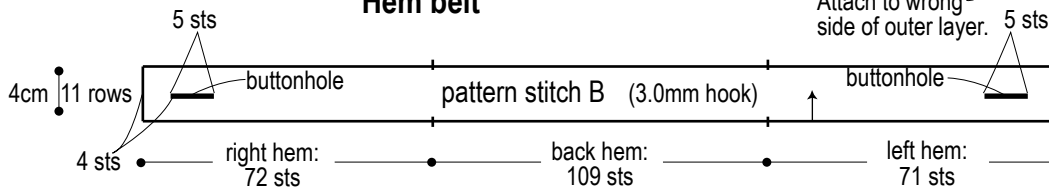
Pattern stitch A (3.0mm hook)

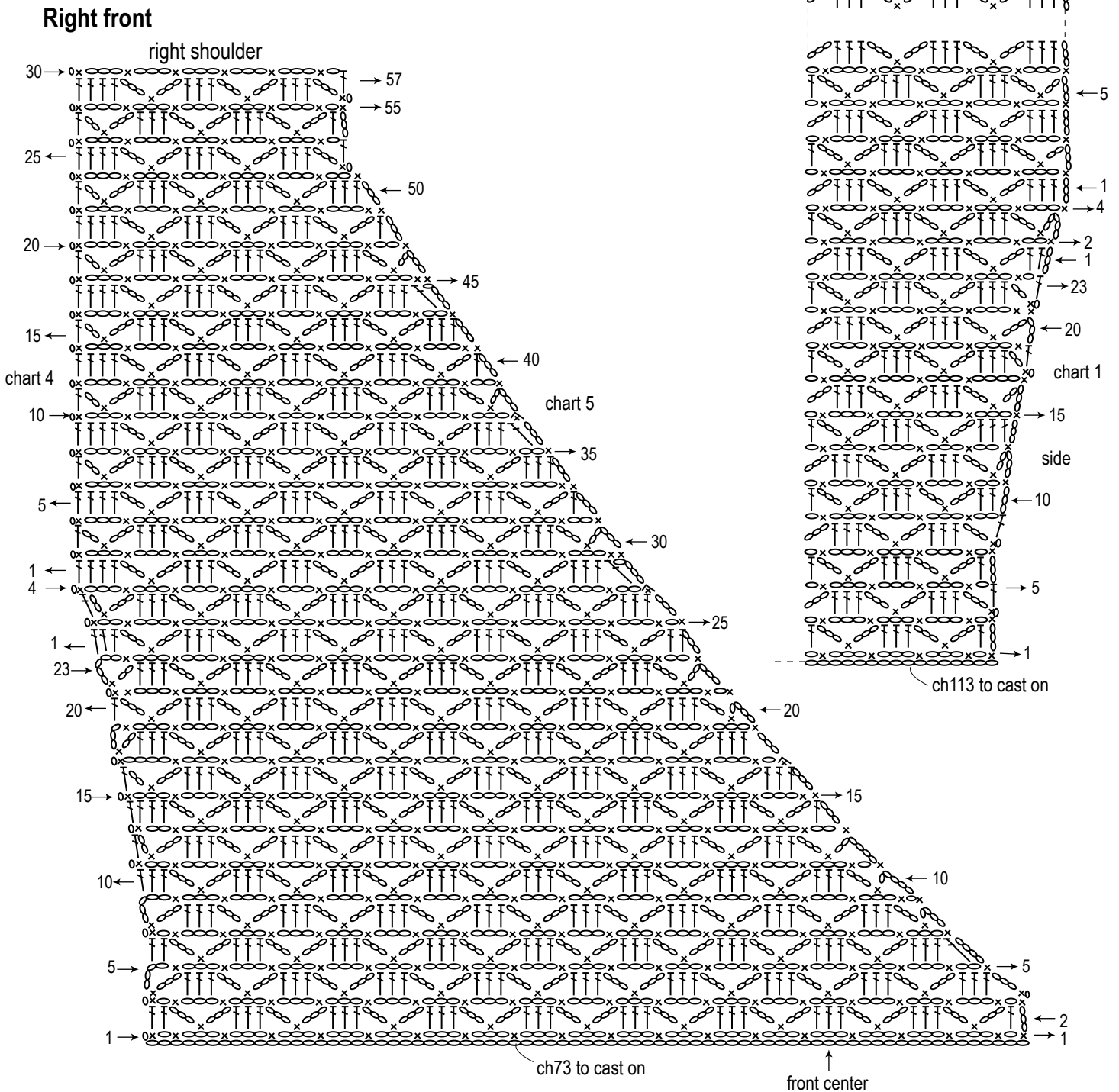
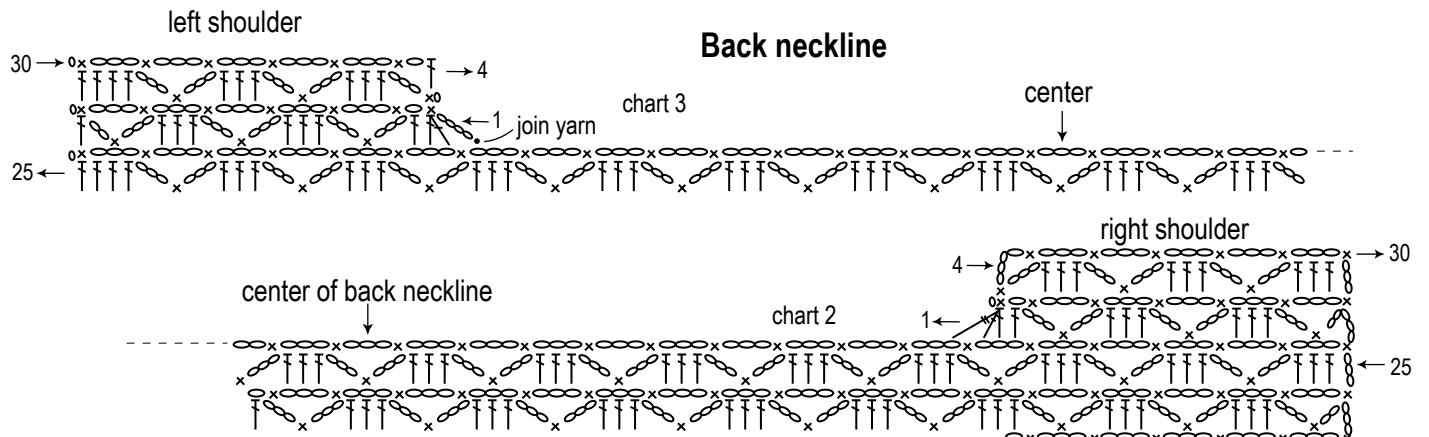


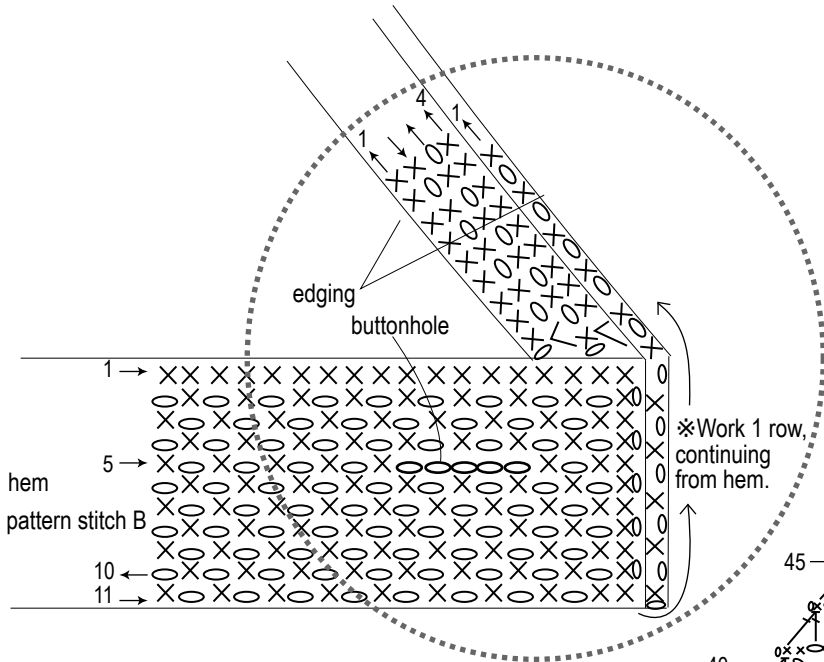
Sleeve/neckline/hem (3.0mm hook)



Hem belt







Left front

