

# 211-12h Celeste Scarf



## **Suggested yarn:**

Pierrot Yarns Celeste [45% cotton, 40% superwash wool, 15% nylon; 208 yds/190m per 1.76oz./50g skein]; color #01 light yellow/blue, 3 skeins [130g]

## **Tools/Notions:**

3.5mm (US E) crochet hook or size necessary to achieve gauge

## **Finished measurements:**

width 26cm/10.24"  
length 160cm/62.99"

## **Gauge (10cm/4" square):**

pattern stitch: 22.5 sts and 12.5 rows

Gauge may vary according to individual crochet style. Change hook size if necessary to achieve gauge. Alternatively, rework pattern with your own gauge measurements.

## **Crochet Tips**

Chain to cast on and work in pattern stitch. Continue with one round of single crochet (US) around all edges, then work edging.

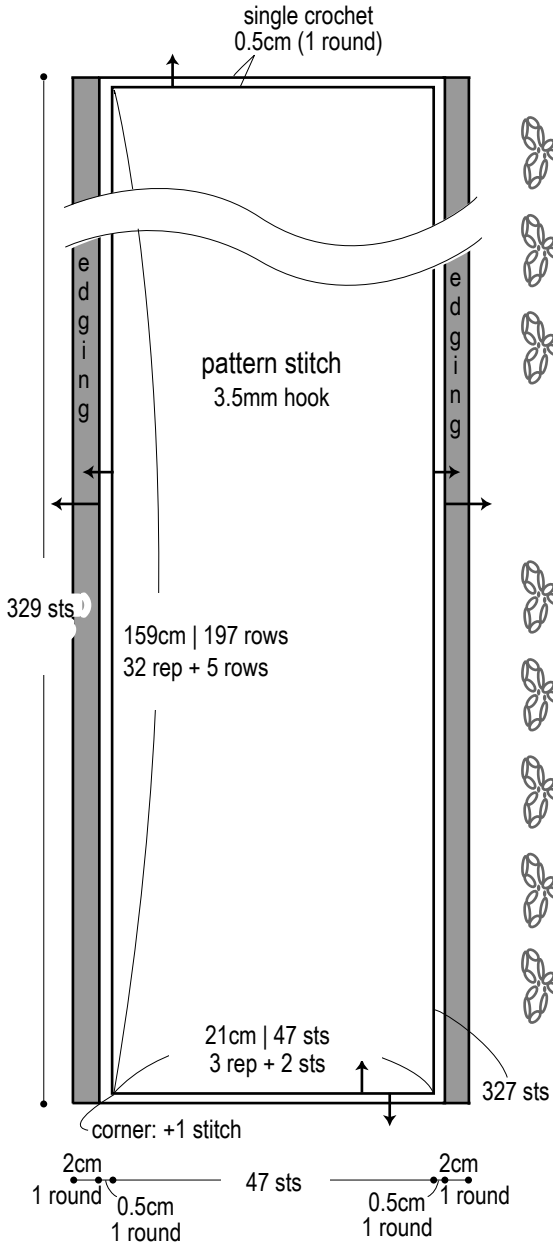
## **Abbreviations:**

ch = chain

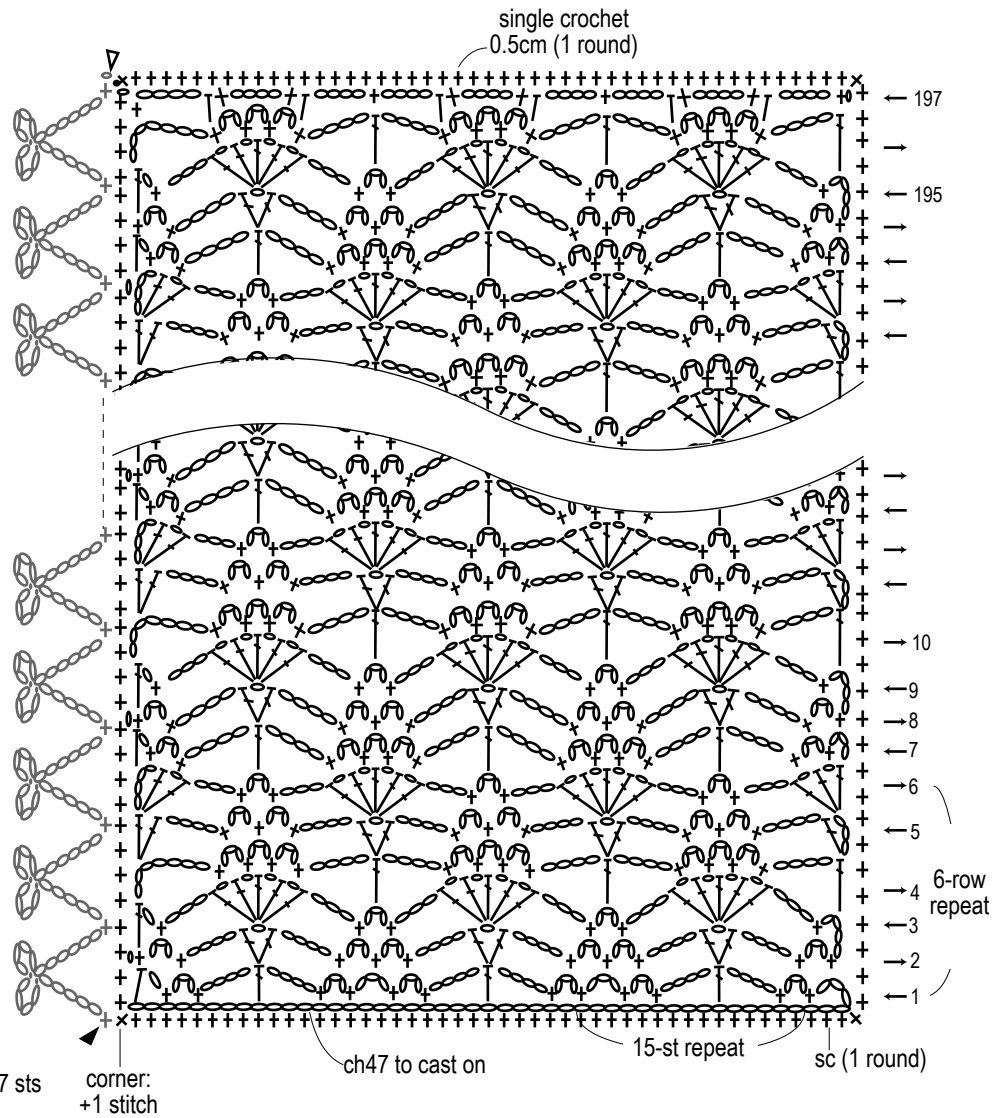
rep = repeat(s)

sc = single crochet (US)

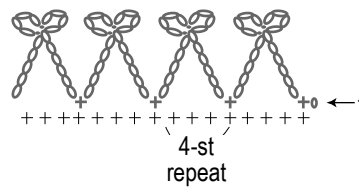
# Scarf



# Pattern stitch (3.5mm hook)



# Pattern stitch (3.5mm hook)



- ◁ = join yarn
- ◀ = cut yarn