

# 211-19h 3-way Convertible Shawl Vest



## **Suggested yarn:**

Pierrot Yarns Cotton Neat [100% cotton; 58yds/53m per 1.41oz./40g skein]; color #616 baby pink, 10 skeins [380g]

## **Tools/Notions:**

5.0mm (US H) crochet hook or size necessary to achieve gauge  
6 buttons (20mm/0.79" diameter)

## **Finished measurements:**

width 45cm/17.72"  
length 115cm/45.28"

## **Gauge (10cm/4" square):**

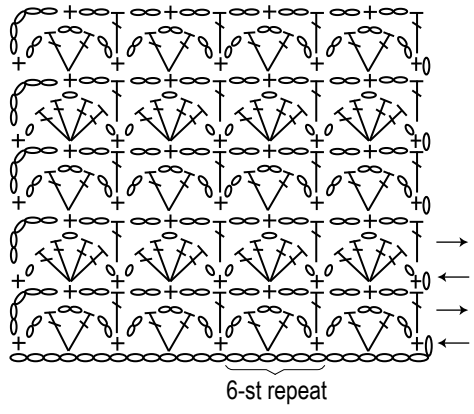
pattern stitch: 16.5 sts and 8.5 rows

Gauge may vary according to individual crochet style. Change hook size if necessary to achieve gauge. Alternatively, rework pattern with your own gauge measurements.

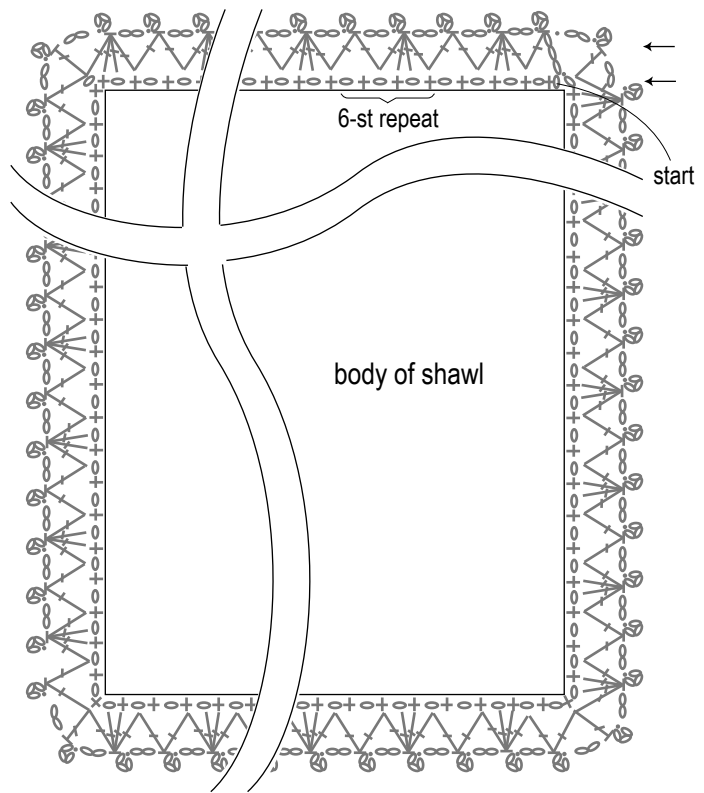
## **Crochet Tips**

**Body:** Chain to cast on; working first row into bottom loops, work in pattern stitch. Work edging around body. Fasten buttons where indicated. Use eyelets in pattern stitch as buttonholes.

**Pattern stitch (5.0mm hook)**



**Edging (5.0mm hook)**



**Convertible Shawl**

