

26-4 Diamond Pullover

© Pierrot Yarns (Gosyo Co., Ltd.). Translation by Linda Lanz.



Materials

- Pierrot Yarns Kirakira Cotton [60% cotton, 35% acrylic, 5% polyester; 98 yds/90m per 1.41 oz./40g skein]; color #1; 6 skeins [240g] – *yarn has been discontinued; please choose appropriate substitute*
- 3.0mm (US 2½) and 3.6mm (approx. US 4) straight knitting needles or sizes necessary to achieve gauge
- 3.0mm (US 2½) circular knitting needle or size necessary to achieve gauge

Gauge

- pattern stitch: 20 sts and 22 rows = 10cm/4" square

Finished measurements

- bust 90cm/35.43"
- length 54cm/21.26"
- cross back width 35cm/13.78"
- sleeve length 26cm/10.24"

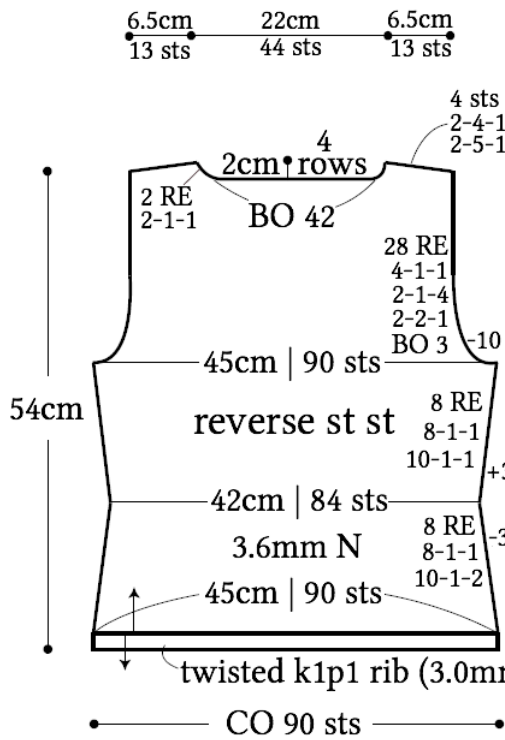
Knitting Tips

Body and sleeves: Cast on with crochet provisional cast-on method and begin according to schematic, with only center panel in pattern stitch. Shape sides by working k2tog or ssk decreases at edges. Shape armscyes and neckline by binding off stitches and by working k2tog or ssk decreases at edges. Shape shoulders with short rows. Pick up live stitches from hem and work in twisted k1p1 rib. Bind off sleeve cap stitches in pattern.

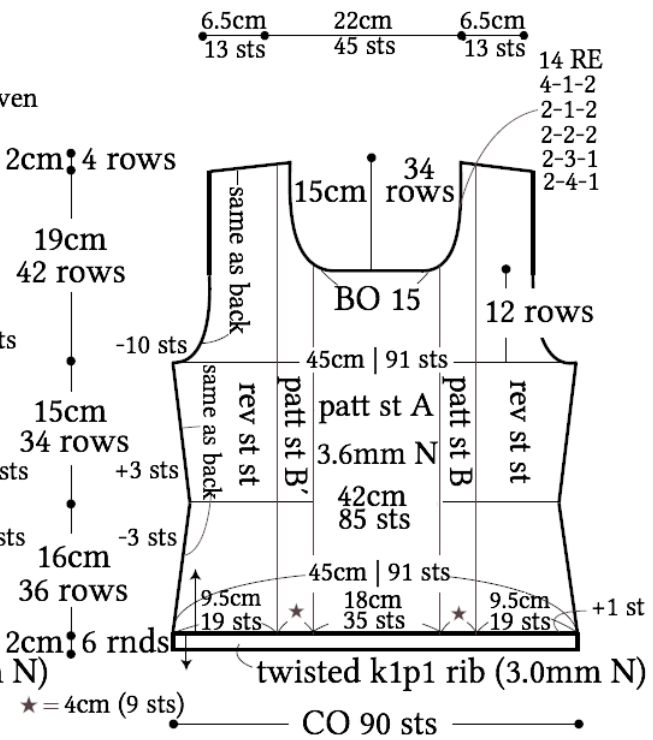
Finishing: Seam shoulders with three-needle bind-off. Pick up stitches around neckline and knit collar in twisted k1p1 rib in the round. Bind off collar with tubular 1x1 bind-off. Seam sides and sleeve undersides with mattress stitch. Join sleeves to body with slip stitch seam.

Abbreviations: BO = bind off; CO = cast on; N = needles; PU = pick up; RE = row(s) even; rnd(s) = round(s); st st = stockinette stitch

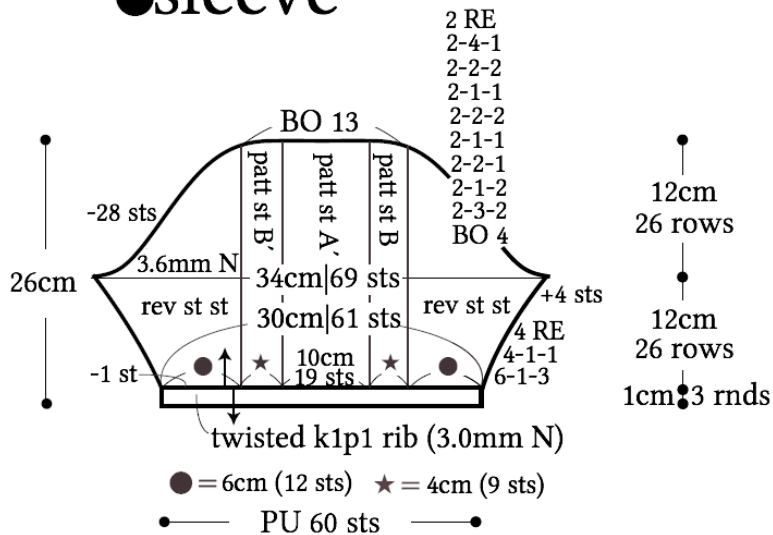
●back



●front

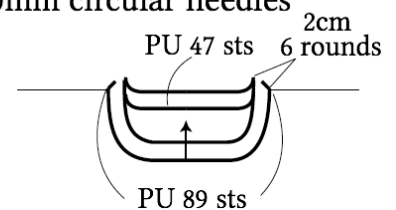


●sleeve



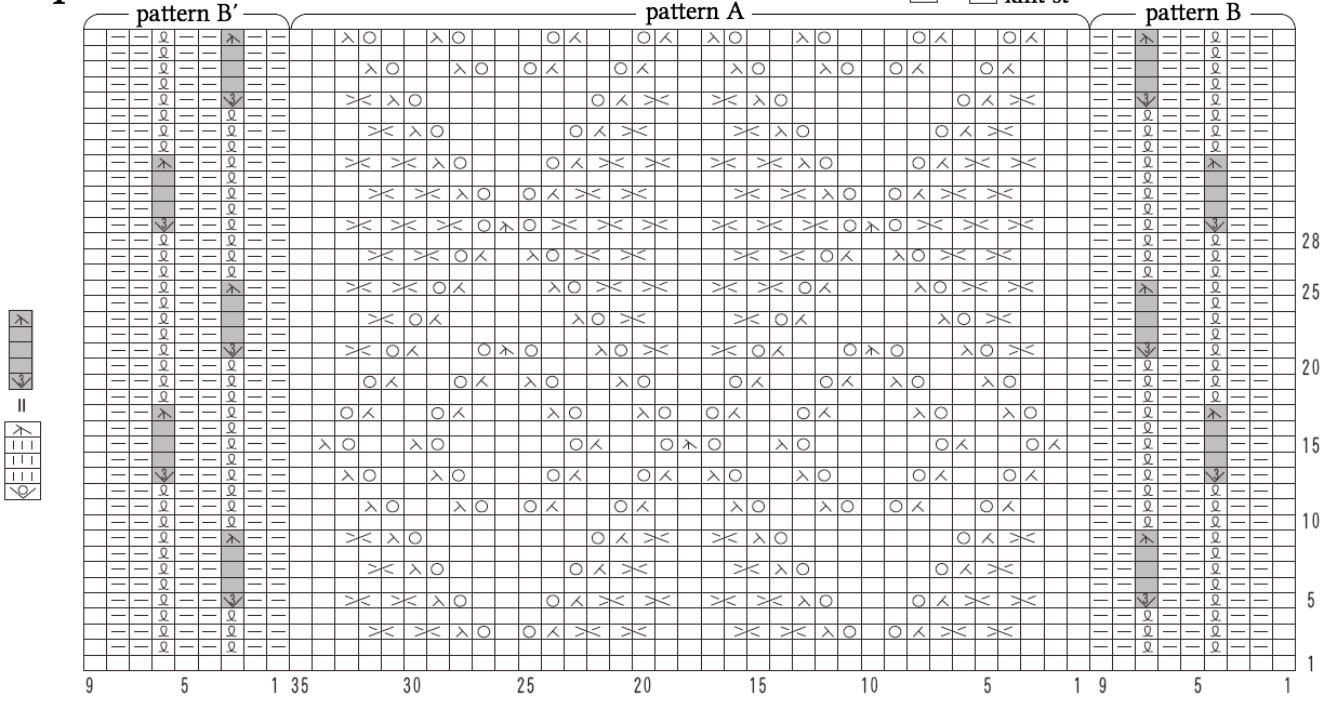
●collar

twisted k1p1 rib
3.0mm circular needles



● pattern stitch

□ = □ knit st 16 rows = 1 repeat



● pattern stitch A' □ = □ knit stitch

