

Amicomo 3-14 Lace Handkerchief & Pocket Tissue Case

© Pierrot Yarns (Gosyo Co., Ltd.). Translation by Linda Lanz.



Materials: Handkerchief

- Pierrot Yarns Cotton Lace #40 [100% cotton; 339 yds/310m per 1.41 oz./40g skein]; color #403 peach pink; 1 skein [8g]
- 1.0mm (US steel hook 12; UK steel hook 6½) crochet hook or size necessary to achieve gauge
- handkerchief (24cm/9.45" square) with prepunched holes for edging

Materials: Pocket Tissue Case

- Pierrot Yarns Yawaraka Lace #18 [100% cotton; 208 yds/190m per 1.76 oz./50g skein]; color #2 white; 1 skein [10g]
- Pierrot Yarns Cotton Lace #40 [100% cotton; 339 yds/310m per 1.41 oz./40g skein]; color #403 peach pink; 1 skein [small amount]
- 1.5mm (US steel hook 8; UK steel hook 4½) and 1.0mm (US steel hook 12; UK steel hook 6½) crochet hooks or sizes necessary to achieve gauge

Gauge

- pattern stitch (tissue case): 38 sts and 17 rows = 10cm/4" square

Finished measurements

- handkerchief 28cm/11.02" square
- pocket tissue case: 8.5cm/3.35" tall by 12cm/4.72" wide

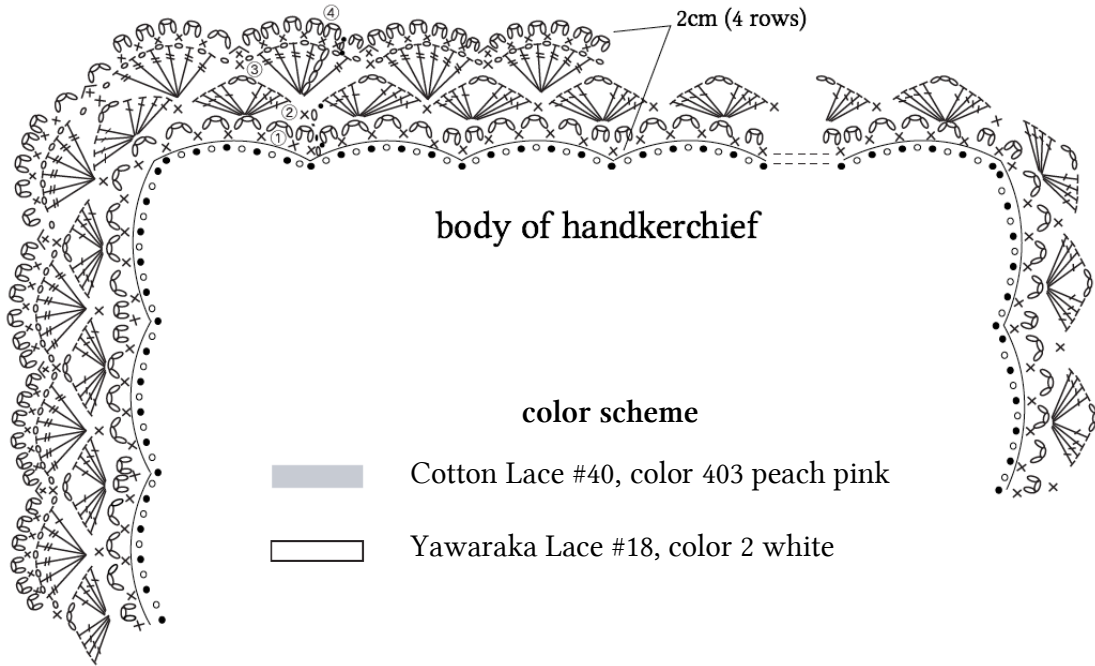
Crochet Tips

Handkerchief: Crochet pattern stitch with lace thread into holes at edge of handkerchief. As the number of holes may vary depending on handkerchief, adjust pattern stitch on round 2 as needed.

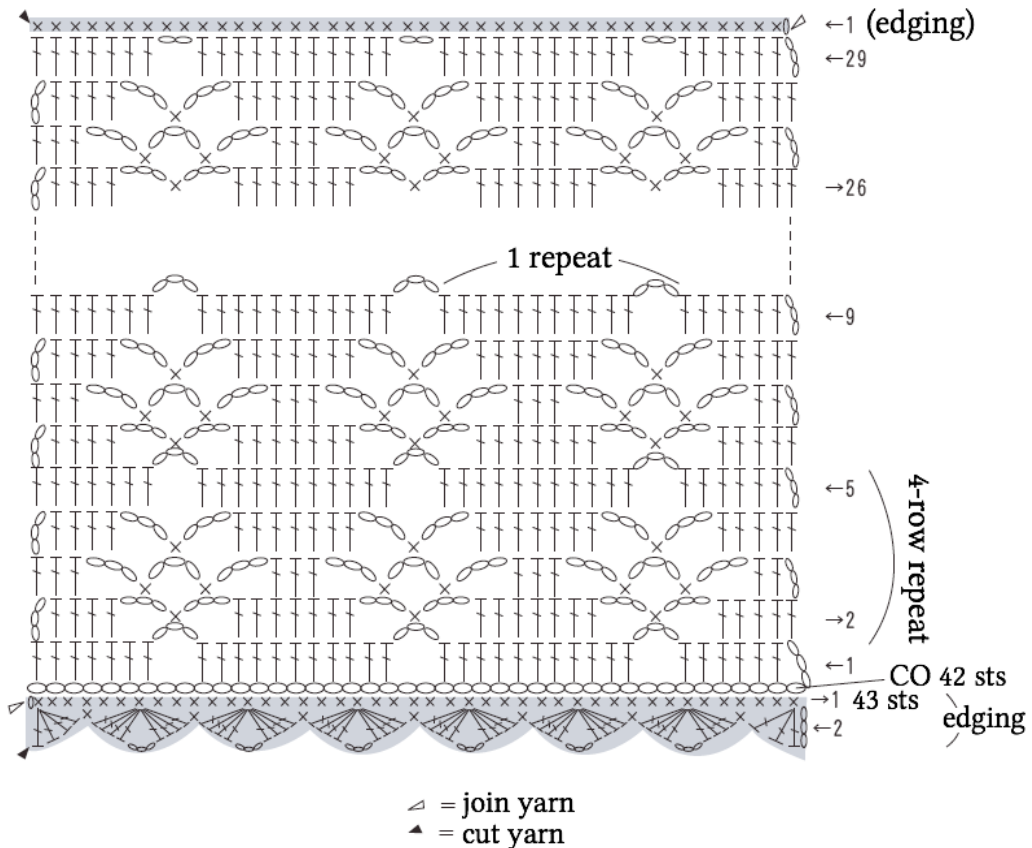
Pocket tissue case: Chain 42; crochet body in pattern stitch. Change color and work 1 row of edging. Join thread and work 2 rows of edging at foundation edge. At fold lines, fold with right side out and seam by working edging along side.

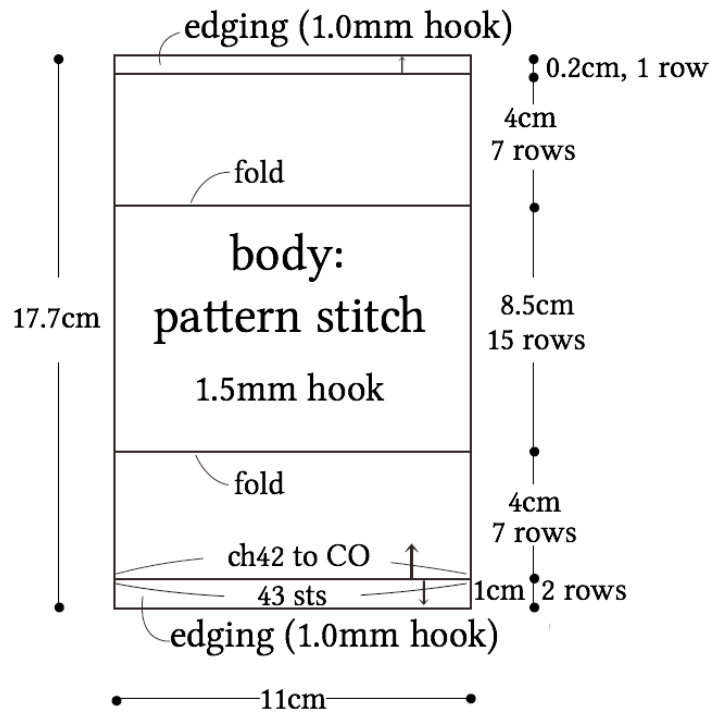
Abbreviations: ch = chain; CO = cast on

●edging instructions



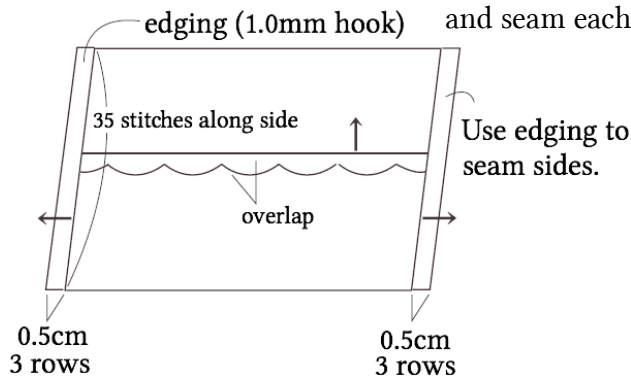
●tissue case: body





● finishing

At fold lines, fold with right side out and seam each side by working edging.



● side seam: edging

