

97-98-1 Peplum Suit

© Pierrot Yarns (Gosyo Co., Ltd.). Translation by Linda Lanz.



Materials

- Pierrot Yarns Silk100 Nep [100% silk; 459 yds/420m per 3.53 oz./100g cone]; color #6353; 6 cones [600g] – *discontinued; please choose appropriate substitute*
- Pierrot Yarns Kirara [89% acetate, 11% polyester; 1892 yds/ 1730m per 1.76 oz./50g cone]; color #4813; 2 cones [100g]
- standard gauge knitting machine (4.5mm needle pitch) *or* knitting needles necessary to achieve gauge
- 2.5mm (approx. US B or C) crochet hook or size necessary to achieve gauge
- 4 buttons (23mm/0.91" diameter)
- 1 pair shoulder pads
- elastic for waistband (3cm/1.18" wide)

Gauge

Gauge is measured in a swatch 10cm/4" square.

- pattern stitch (body, skirt): 29 sts and 78 rows
- stockinette stitch: 27 sts and 43 rows
- pattern stitch (peplum): 28 sts and 78 rows

Finished measurements

- bust 100cm/39.37"
- cross back width 38cm/14.96"
- length 55cm/21.65"
- sleeve length 53cm/20.87"
- waist 76cm/29.92"
- hips 98cm/38.58"
- skirt length (below waistband) 55cm/21.65"

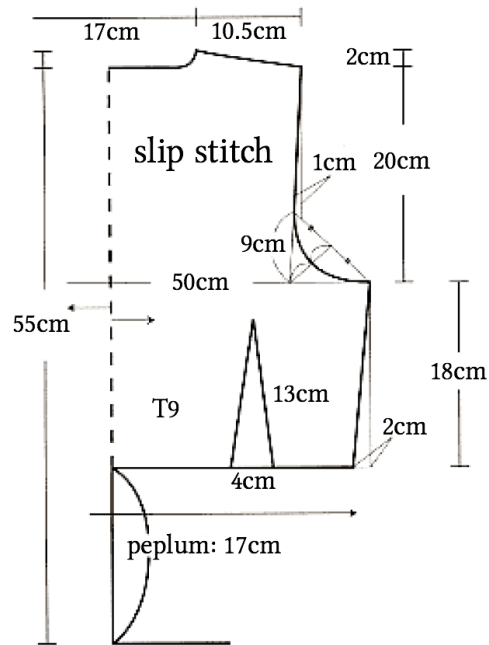
Knitting Tips

Front, back, sleeves, and skirt: Cast on for back, sleeves, and skirt and begin knitting from center. For opposite side, pick up stitches from cast-on edge and begin knitting from punchcard row 3. Work sides of jacket, bottom of sleeves, and skirt in short rows; leave stitches live and remove from machine (for example, cast off onto waste yarn). Knit buttonholes using waste yarn; with wrong side facing, reinforce buttonholes with buttonhole stitch. Hang hem on machine and knit 3cm/1.18" at a gauge somewhat tighter than suggested gauge for stockinette stitch. (All darts are sewn.)

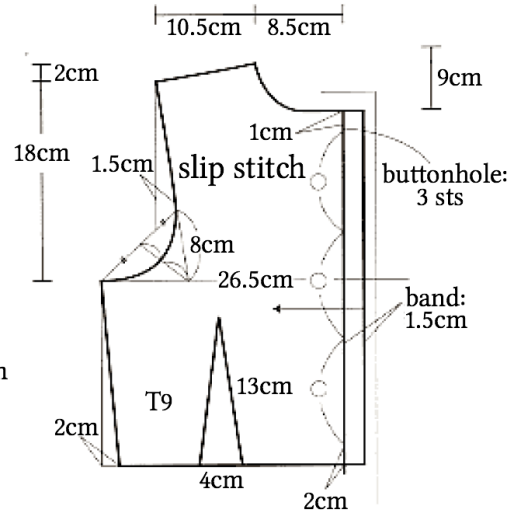
Finishing: Seam sides of jacket, bottom of sleeves, and sides of skirt on knitting machine. Seam shoulders and attach sleeves. Sew darts with back stitch. Sew peplum to body, reinforcing with twill tape. (May also be sewn using a sewing machine.)

Abbreviations: T = tension dial

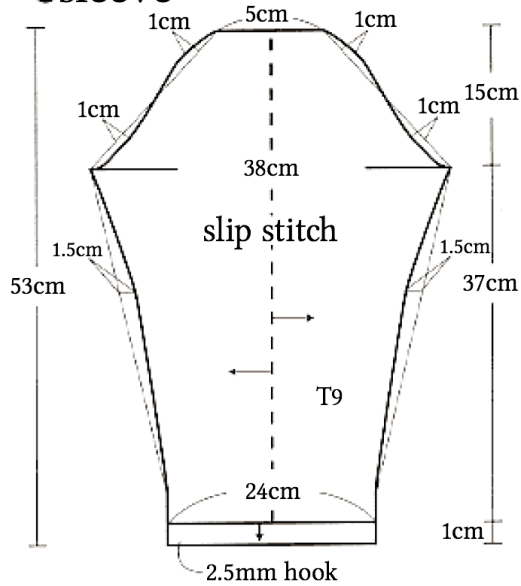
●back



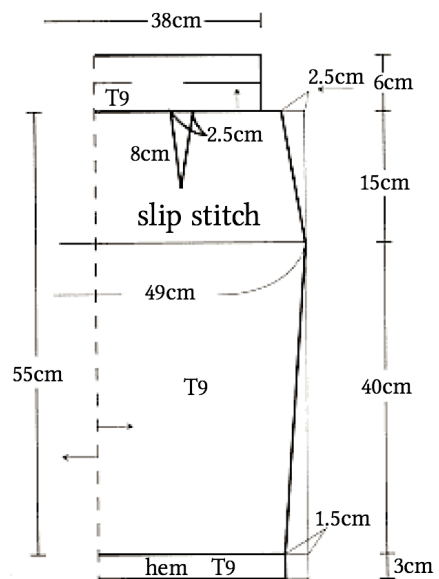
●front



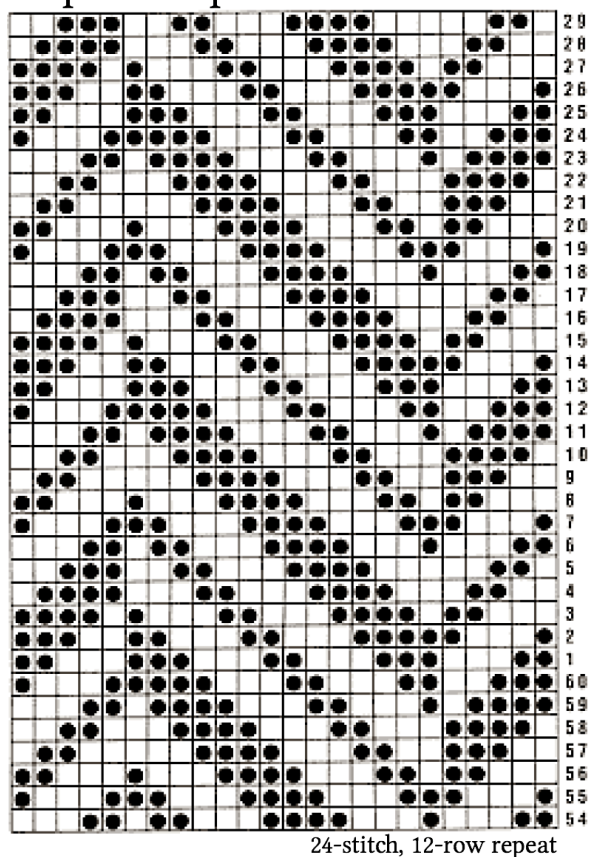
●sleeve



●skirt (front & back)



Slip stitch punchcard



※ Use wrong side of fabric as right side of garment.

●peplum

