

Alpaca Natural Tunic

© Pierrot Yarns (Gosyo Co., Ltd.). Translation by Linda Lanz.



Materials

- Keito-Zakka Stores Alpaca Natural [100% baby alpaca; 133 yds/22m per 1.76 oz./50g skein]; color #86 non-black; 8 skeins [380g]
- 3.0mm (approx. US C or D) crochet hook or size necessary to achieve gauge

Gauge

Gauge measured in a swatch 10cm/4" square.

- pattern stitch A: 25.5 sts and 11.5 rows
- pattern stitch B: 22.5 sts and 7 rows
- pattern stitch C: 16.5 sts and 5 rows

Finished measurements

- bust 88cm/34.65"
- cross back width 35cm/13.78"
- length 75.5cm/29.72"

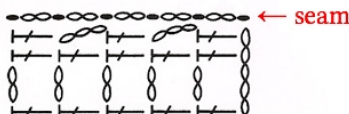
Crochet Tips

Body: ch113 to cast on. Working into bottom loops of chain, ch3 as turning post, then crochet in pattern stitch A from bustline toward shoulders. Working into chain at bustline, work in pattern stitch B and C from bustline toward hem, referring to schematics.

Finishing: Join shoulders with single crochet (US) seam, and join sides with slip/chain seam (see below). Working in the round, work 3 rounds of single crochet (US) around hem. Work edging around neckline and arms.

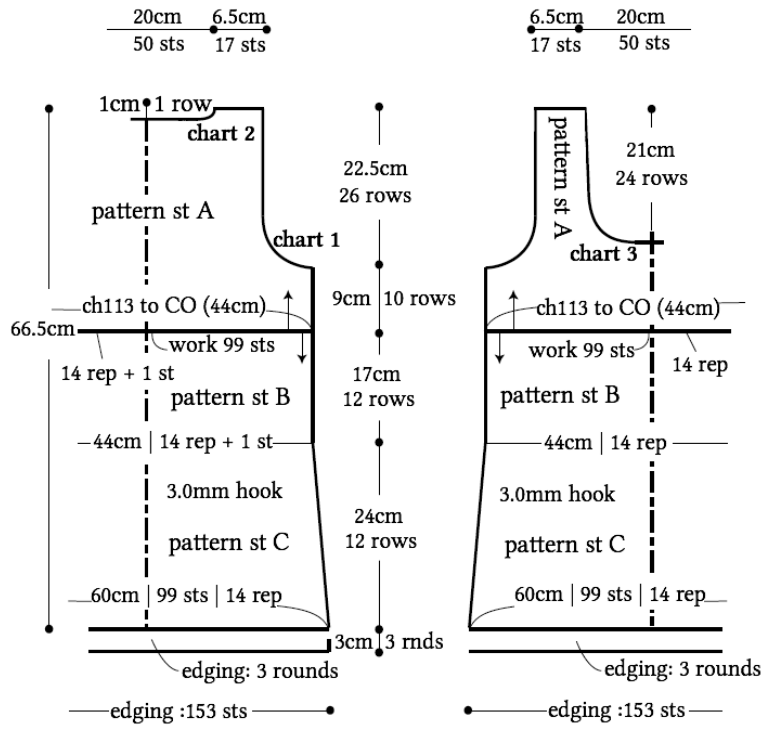
Abbreviations: ch = chain; CO = cast on; rep = repeat(s); rnd(s) = round(s)

Slip/chain seam: essentially a slip stitch seam with chain stitches interspersed between slip stitches. Sl st through one stitch in each layer. *ch2, sl st in top of next row*, continue from * to * until end. (*Note:* use ch2 only for dc. Use ch1 for hdc, ch2 for dc, ch3 for tr, and so on.)

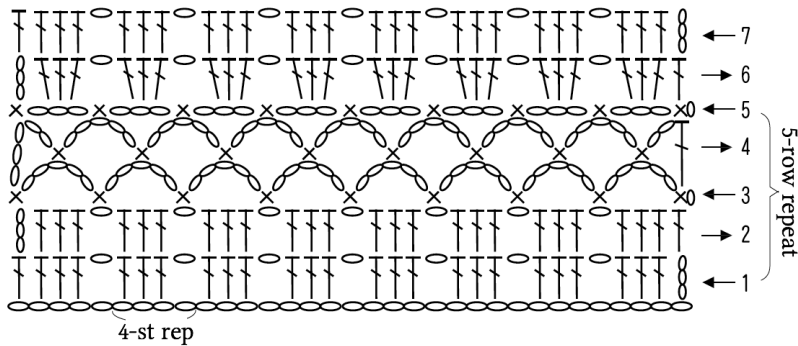


●back

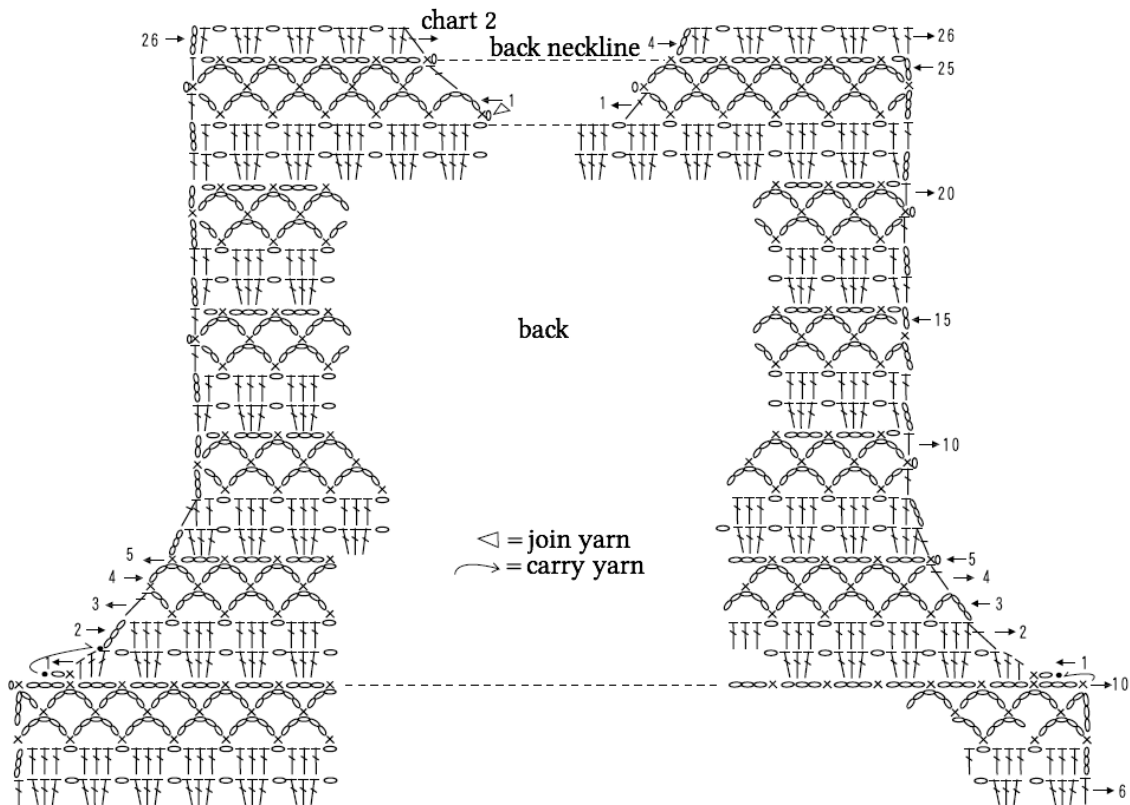
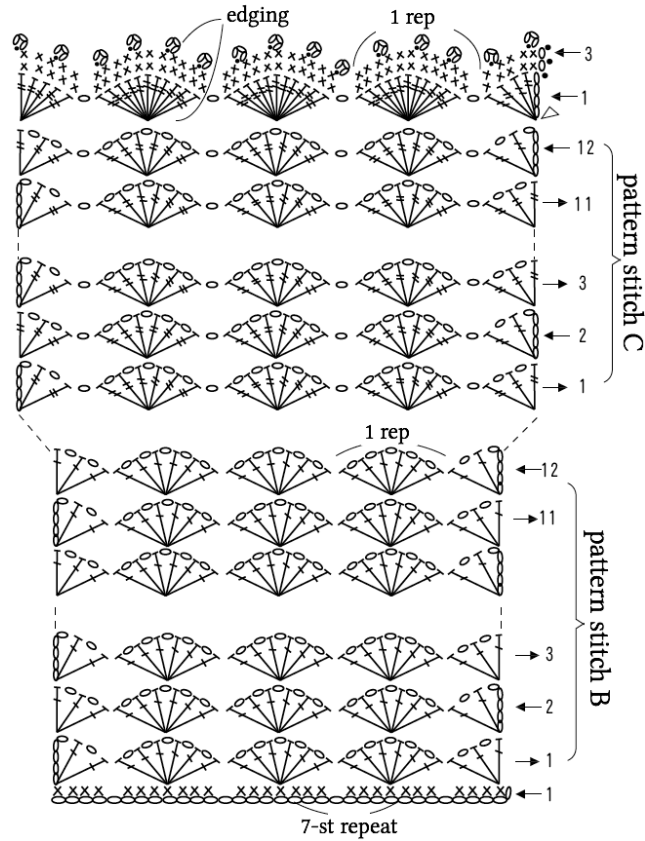
●front

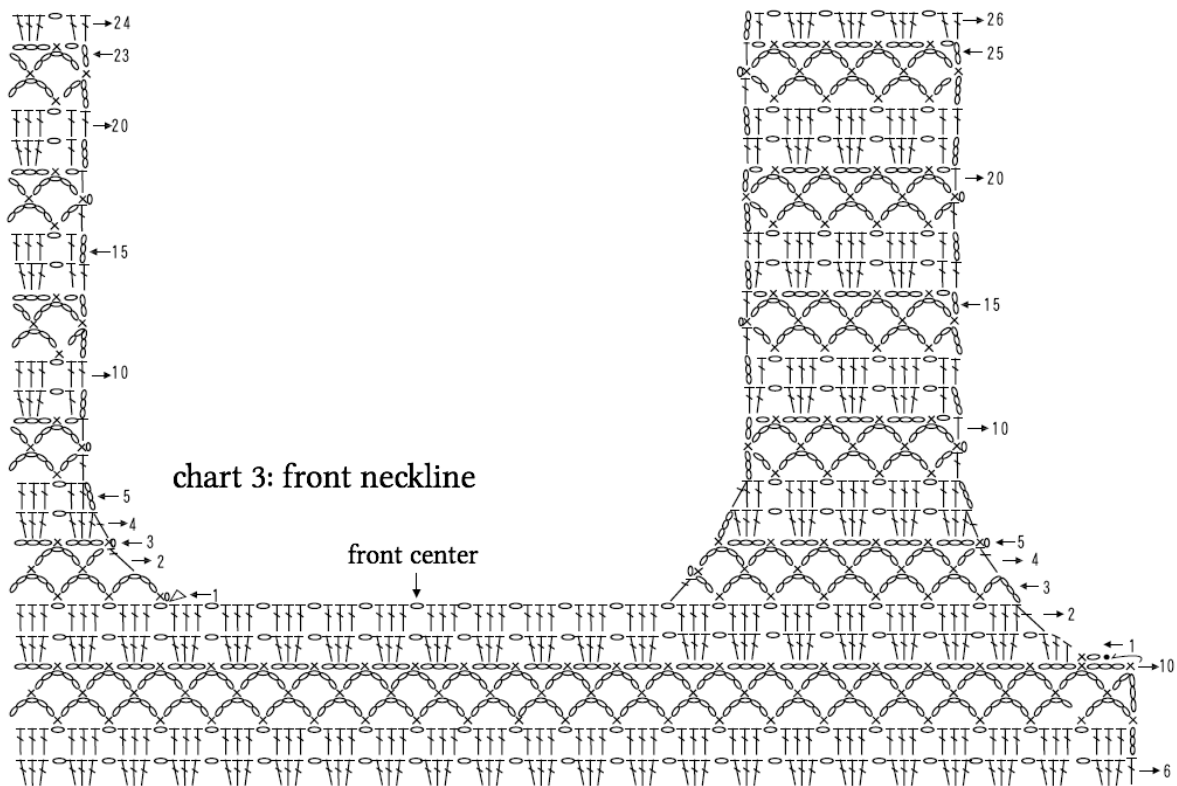


●pattern stitch A

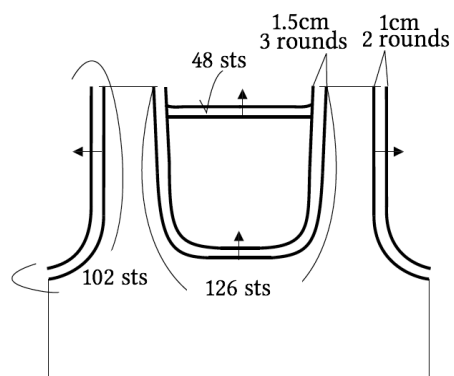


● pattern stitch B, C

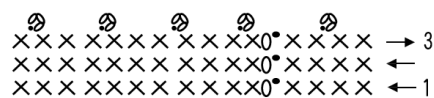




●neckline, arm edging



●edging 3.0mm hook



※For neckline, 3 rounds; for arms, 2 rounds.