

# 29-210-63 Tunic

© Pierrot Yarns (Gosyo Co., Ltd.). Translation by Linda Lanz.



## Materials

- *original suggestion (discontinued)*: Pierrot Yarns NEW Hitsujichan [100% wool; 77 yds/70m per 1.06 oz./30g skein]; 10 skeins [300g]
- *suggested substitute*: Pierrot Yarns Stylish Garden [100% wool; 102 yds/93m per 1.41 oz./40g skein]; 8 skeins [300g]
- 3.9mm (approx. US 6) knitting needles or size necessary to achieve gauge
- 2.5mm (approx. US B or C) crochet hook or size necessary to achieve gauge
- tapestry needle

## Gauge

Gauge is measured in a swatch 10cm/4" square.

- stockinette stitch, pattern stitches A and B: 20 sts and 25 rows

## Finished measurements

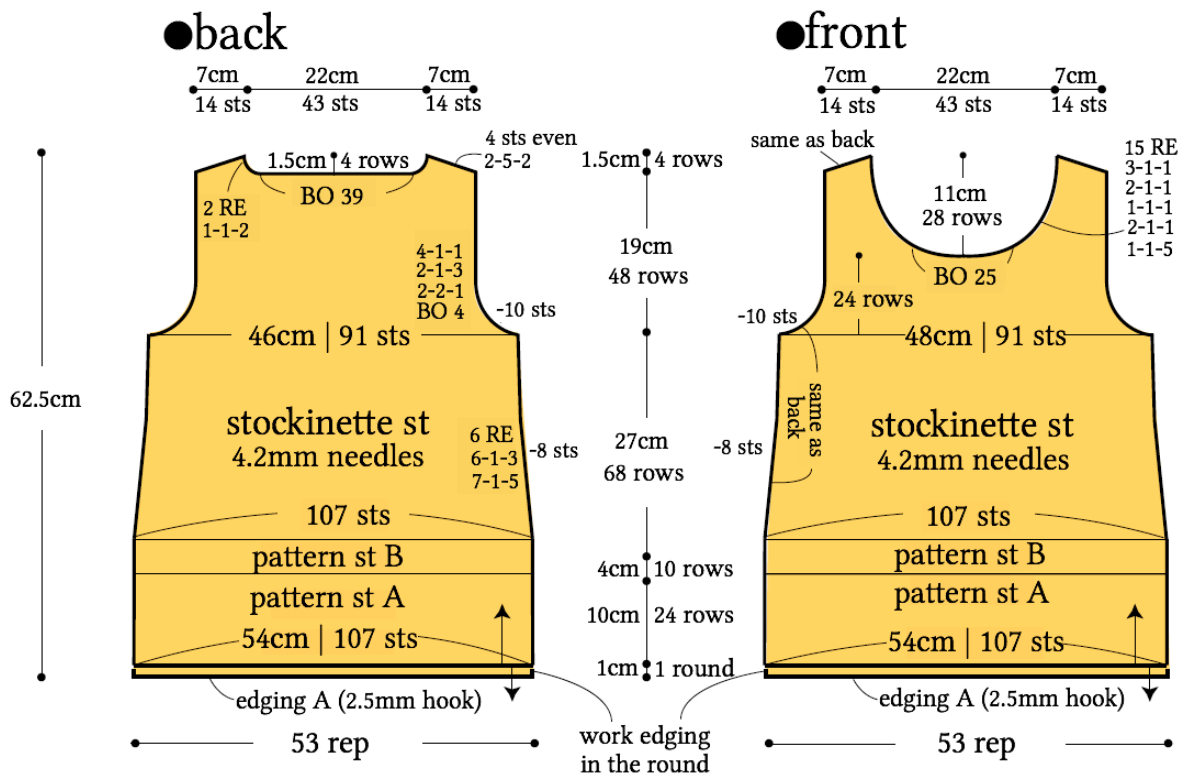
- bust 92cm/36.22"
- length 62.5cm/24.61"
- cross back width 36cm/14.17"
- sleeve length 16cm/6.30"

## Knitting Tips

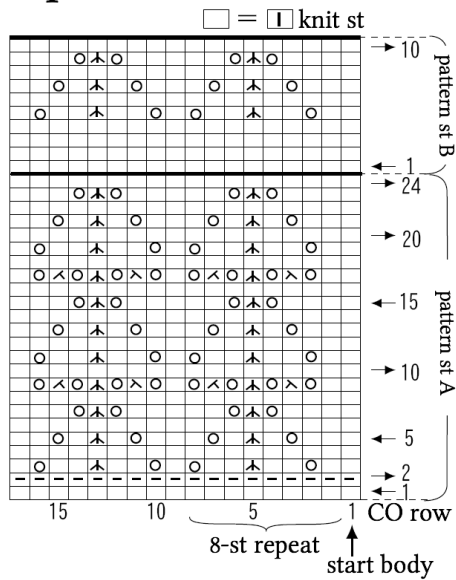
**Body and sleeves:** Cast on with long-tail cast-on method and work in pattern stitch A and B. Continue in stockinette stitch. Start sleeves in the same manner; work in pattern stitch A. For side shaping, use fully fashioned decreases (worked 1 stitch in from edge). For armscye, neckline, and sleeve cap shaping, use fully fashioned decreases and bind off stitches as indicated.

**Finishing:** Join shoulders with three-needle bind-off. Join sides and sleeve undersides with mattress stitch. Join sleeves to body with slip stitch seam.

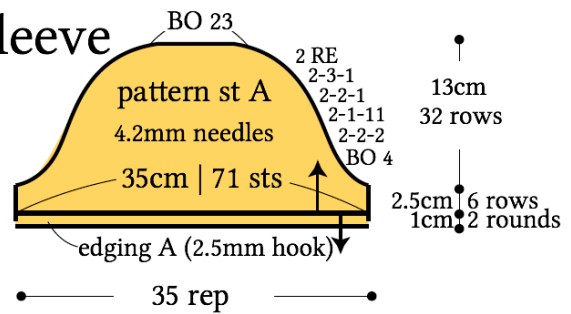
**Abbreviations:** BO = bind off; RE = row(s) even; rep = repeat(s)



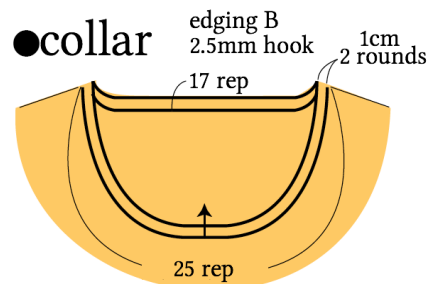
## ●pattern stitch



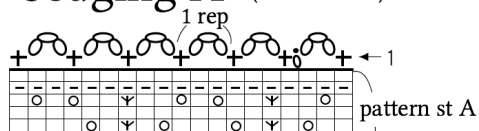
## ●sleeve



## ●collar



## ●edging A (2.5mm hook)



## ●edging B (2.5mm hook)

