

27-28-1 Bolero

© Pierrot Yarns (Gosyo Co., Ltd.). Translation by Linda Lanz.



Materials

- Pierrot Yarns Silk100 Sport [100% tussah silk; 169 yds/155m per 1.76 oz./50g cone]; color #9110 pale light pink; 5 cones [240g]
- Pierrot Yarns Kirara [83% acrylic, 17% polyester; 1750 yds/1600m per 1.76 oz./50g cone]; color #4806 light pink silver lamé; 1 cone [35g]
- 3.6mm (approx. US 4 or 5) knitting needles or size necessary to achieve gauge
- 2.5mm (approx. US B or C) crochet hook or size necessary to achieve gauge

Gauge

- pattern stitch A: 23 sts and 28 rows = 10cm/4" square

Finished measurements

- center back neck-to-cuff measurement 69.5cm/27.36"

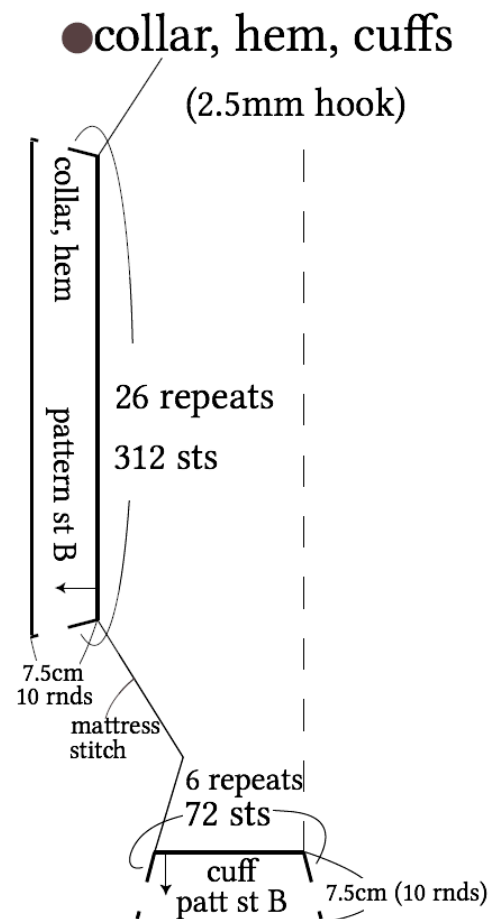
Knitting Tips

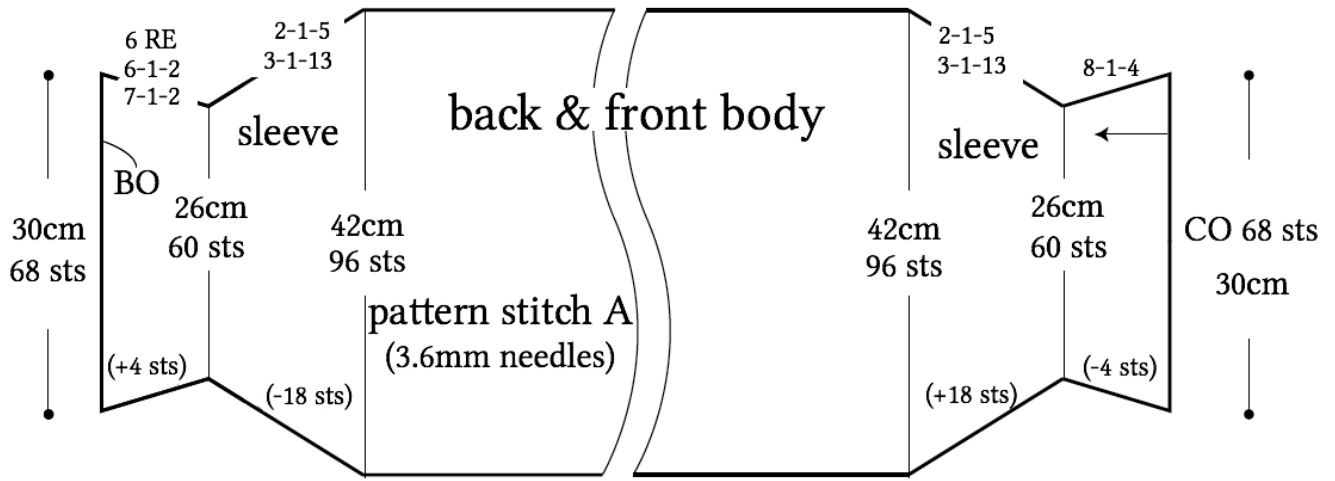
Body, sleeves: After casting on with crochet provisional cast-on method, knit in pattern stitch A. Use k2tog and ssk for decreases (k2tog at right edge, ssk at left edge). Use lifted increase for increases. When finished knitting, bind off in pattern.

Finishing: Leaving center 66cm/25.98" of both long sides unseamed, seam sleeves using mattress stitch. Crochet pattern stitch B around collar, hem, and cuffs.

※ Entire garment worked with one strand of Silk100 Sport and one strand of Kirara held together.

Abbreviations: CO = cast on; RE = row(s) even; rnd(s) = round(s)

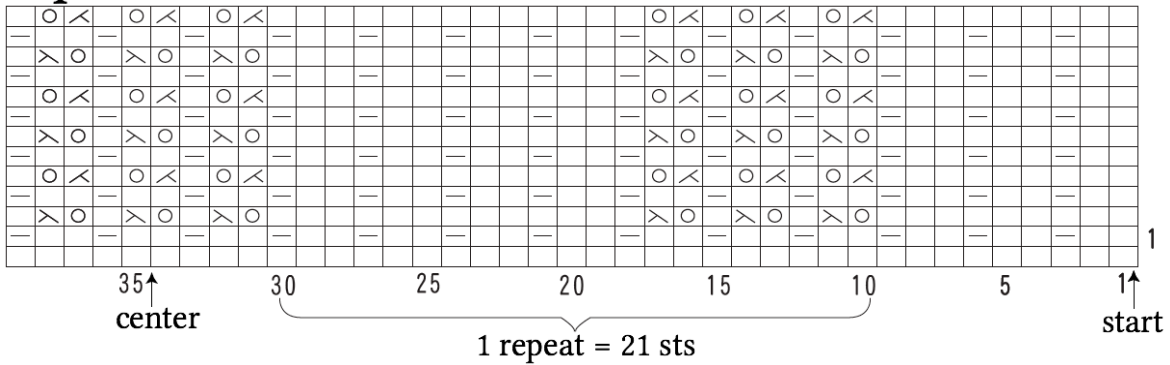




11.5cm 17.5cm 66cm (185 rows) 17.5cm 11.5cm
 32 rows 49 rows 49 rows 32 rows

● pattern stitch A

□ = □ knit st



● pattern stitch B

