

# 26-27-6 Basic Alpaca Vest

© Pierrot Yarns (Gosyo Co., Ltd.). Translation by Linda Lanz.



## **Materials**

- Pierrot Yarns Basic Alpaca Namibuto [50% alpaca, 50% lambswool; 107 yds/98m per 1.41 oz./40g skein]; color #31 ivory; 6 skeins [220g]
- 3.9mm (approx. US 6) and 4.5mm (US 7) knitting needles or sizes necessary to achieve gauge
- 2 buttons (15mm / approx. 5/8")

## **Gauge**

- stockinette stitch: 19 sts and 24 rows = 10cm/4" square
- pattern stitch: 13 sts = 5.5cm/2.17" and 24 rows = 10cm/4"

## **Finished measurements**

- chest 100cm/39.37"
- cross back width 43cm/16.93"
- length 63.5cm/25.00"

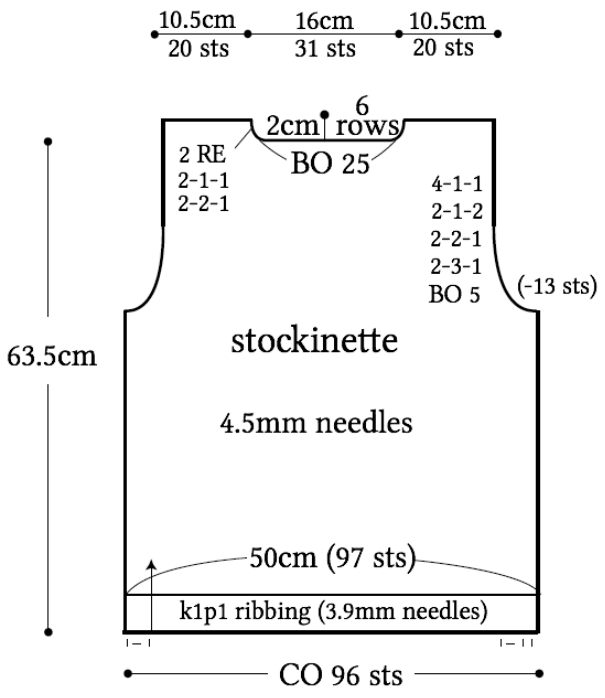
## **Knitting Tips**

**Body:** Cast on using tubular 1x1 cast-on method and knit in k1p1 ribbing and stockinette stitch according to schematics. For front, begin working right and left sides separately when indicated. For armholes and neckline, bind off stitches as indicated and decrease at edges using k2tog or ssk.

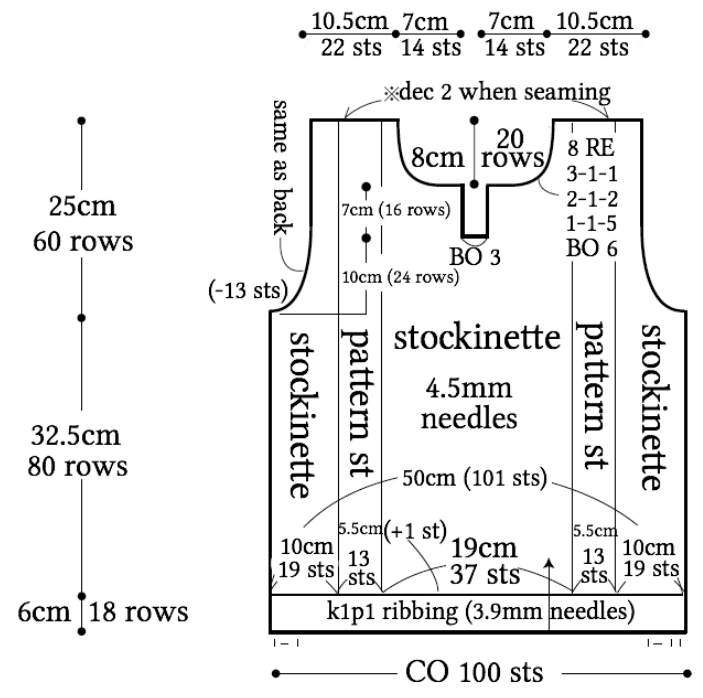
**Finishing:** Join shoulders with three-needle bind-off. Pick up stitches from neckline and knit collar in k1p1 ribbing. Bind off with tubular cast-off. Knit placket in k1p1 ribbing, working buttonholes in left placket; bind off with tubular cast-off. Seam placket edges to body. Join sides with mattress stitch.

**Abbreviations:** BO = bind off; CO = cast on; PU = pick up; RE = row(s) even

## ●back

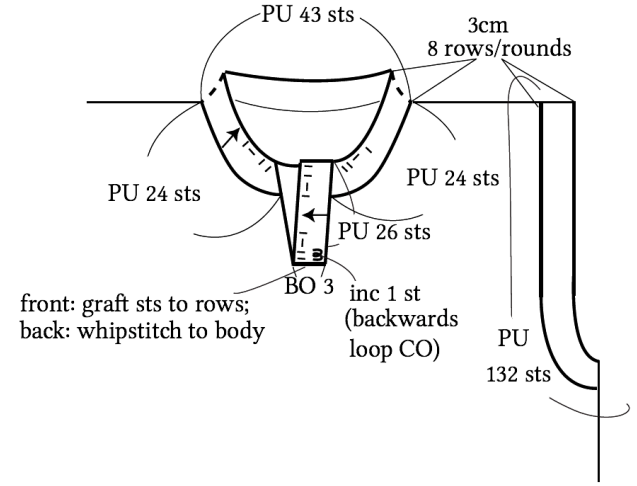


## ●front



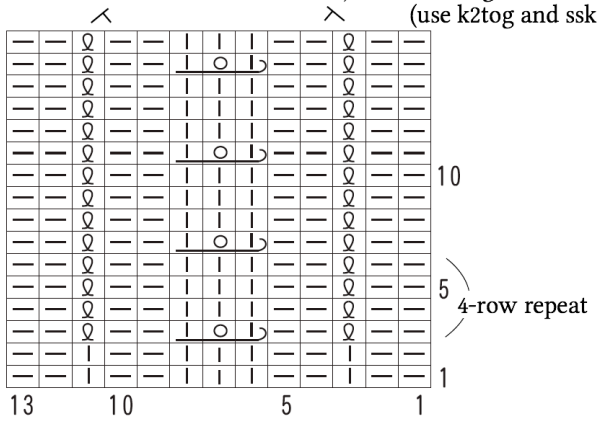
## ●collar

k1p1 ribbing (3.9mm needles)



## ●pattern stitch

decrease 2 sts when seaming shoulders (use k2tog and ssk)



## ●buttonholes

