

29-210-13 Patterned Cardigan

© Pierrot Yarns (Gosyo Co., Ltd.). Translation by Linda Lanz.



Materials

- Pierrot Yarns Silk100 Bouclé Fingering [100% silk; 547 yds / 500m per 3.53 oz. / 100g cone]; color #4523 purple; 2 cones [190g]
- 2.0mm crochet hook or size necessary to achieve gauge; US B is the closest equivalent
- 5 buttons (15mm / approx. 5/8")
- tapestry needle

Gauge

Gauge is measured in a swatch 10cm/4" square.

- pattern stitch A: 31 st and 14.5 rows
- pattern stitch B: 33.5 st and 12.5 rows

Finished measurements

- bust 90cm/35.4"
- back width 34cm/13.4"
- length 53cm/20.9"
- sleeve length 16cm/6.3"

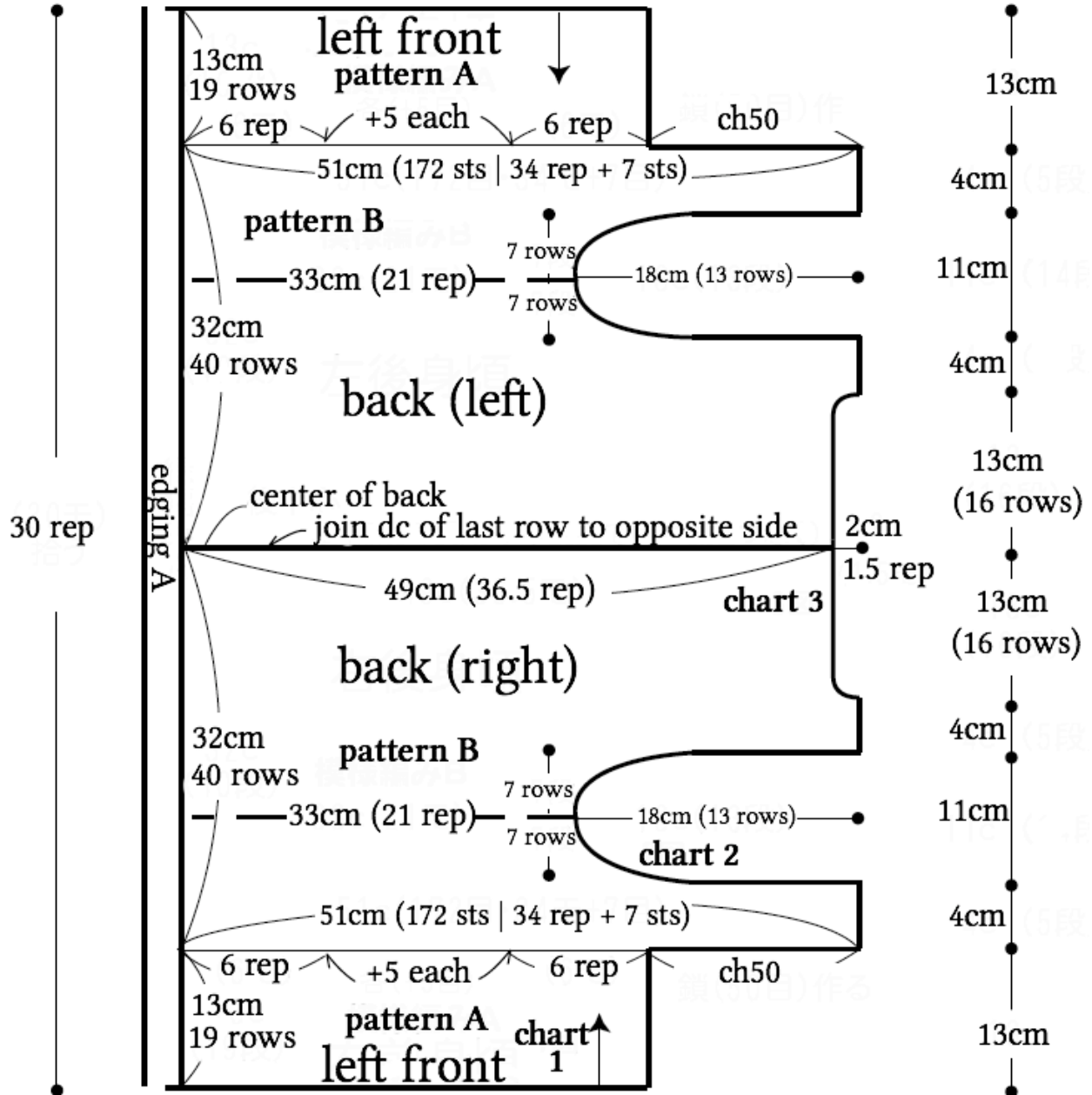
Crochet Tips

Body: Chain to cast on, and starting from the right front, work patterns A and B in turn. When switching to pattern B, increase by two pattern repeats (10 stitches). For the right side, lengthen by 10 pattern repeats by working an additional 50 chains and continuing in pattern stitch for shoulder. Work 12 rows of sleeve (armhole) shaping according to the diagram, cast on 17 stitches and cut yarn. Join yarn in indicated place and crochet rows 13 and 14. Cast on 38 stitches and crochet 5 shoulder rows. When the left piece is finished, join right and left pieces at back by joining double crochet stitches using slip stitch. Crochet the sleeves following the chart, starting from the cuffs.

Finishing: Join shoulder seams with woven seam. Join sleeves to body with slip stitch. Join yarn at left front to begin edging. Work 1 row of edging A at hem and cut yarn. For collar, join yarn at right front edge. After row 1 of edging C, cut yarn. Then join yarn to hem once again and work two rows of edging A in the same way. Work edging B along right front, second row of edging C at collar, then edging B along left front. Finally, join yarn at left from edge of collar and crochet rows 3 and 4 of edging C.

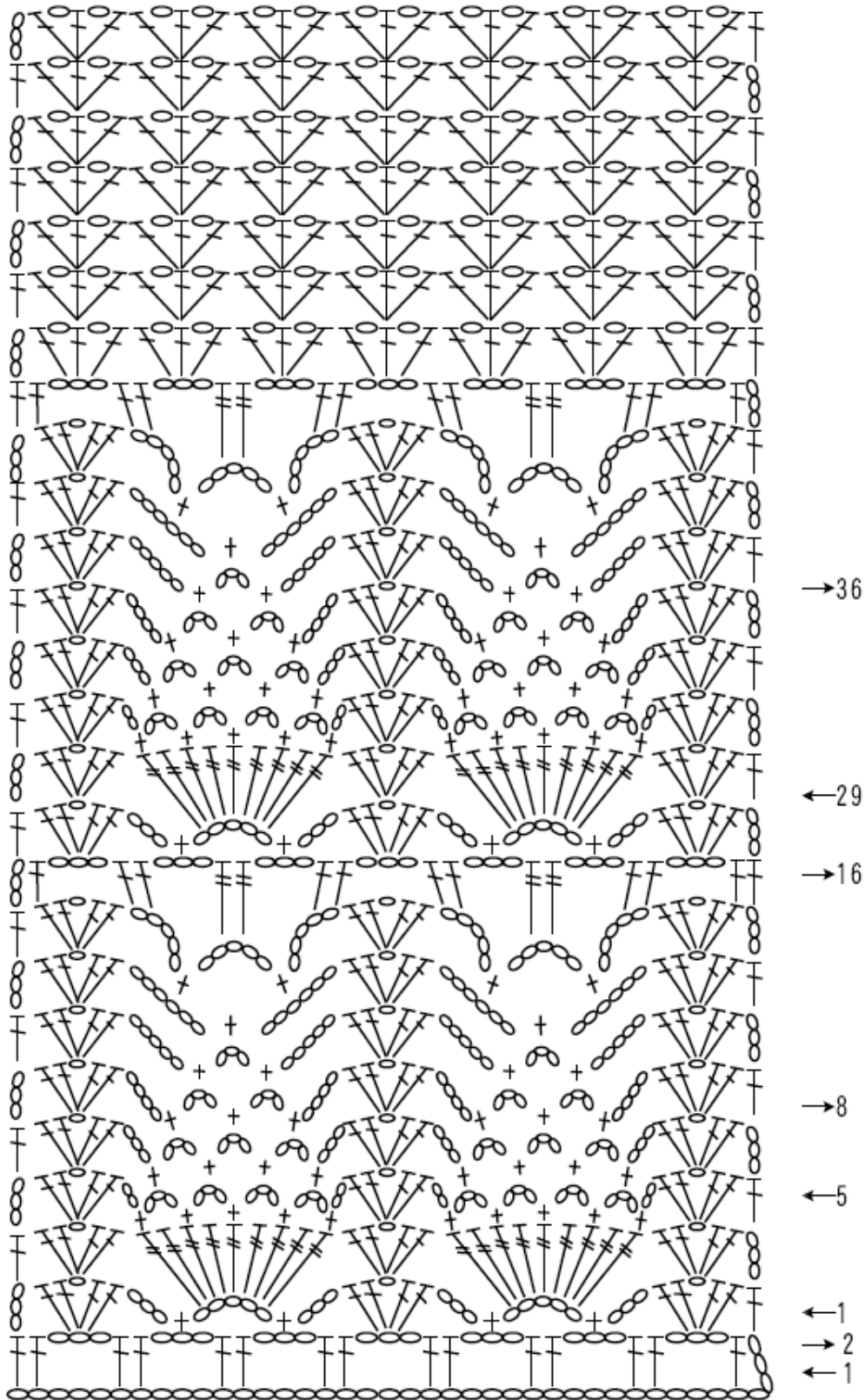
2cm
 ●—● ch36 (112 sts | 7 rep + 7 sts) ●— 15cm —●
 2 rows

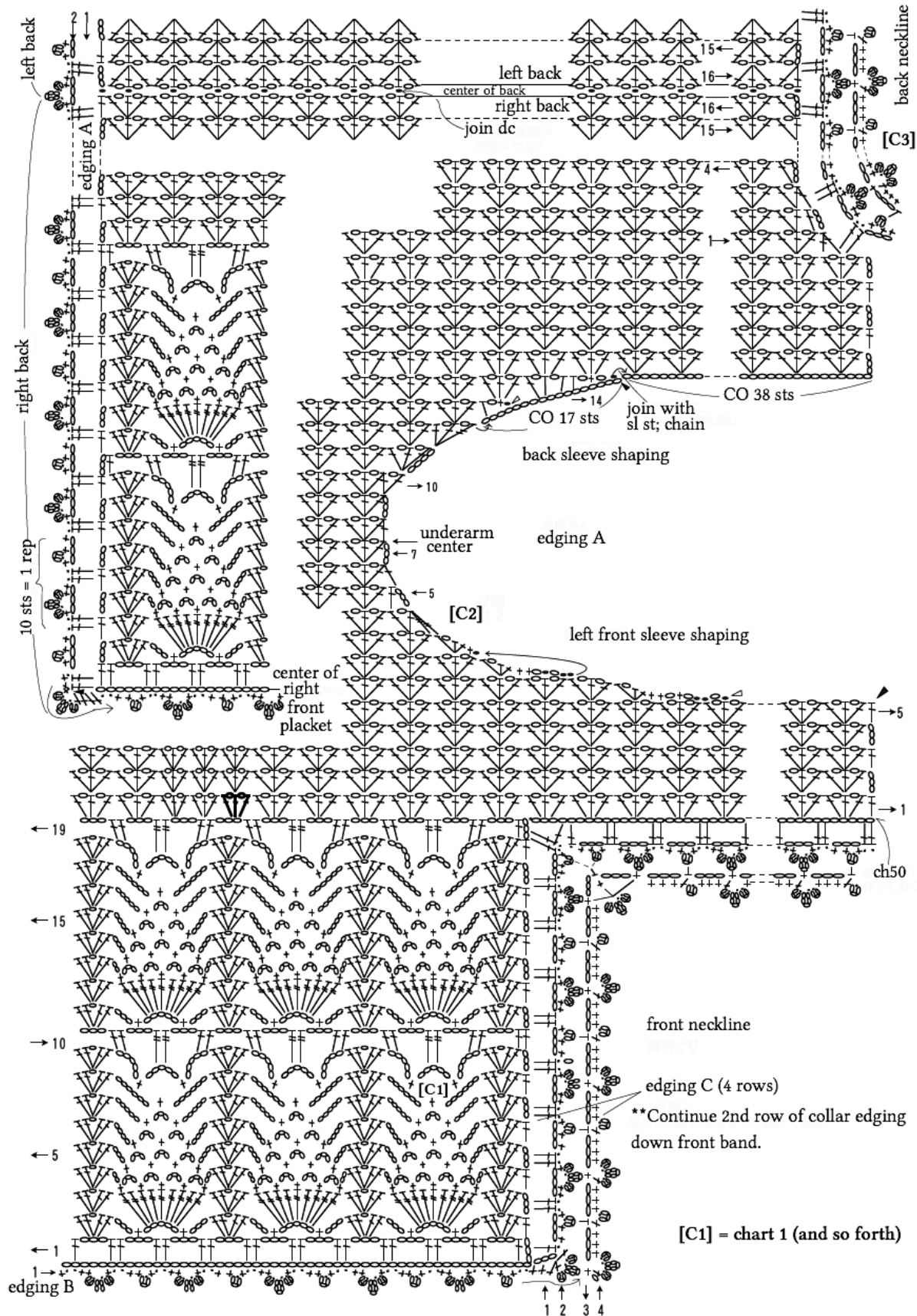
rep = repeat(s)



2cm
 ●—● ch36 (112 sts | 7 rep + 7 sts) ●— 15cm —●
 2 rows

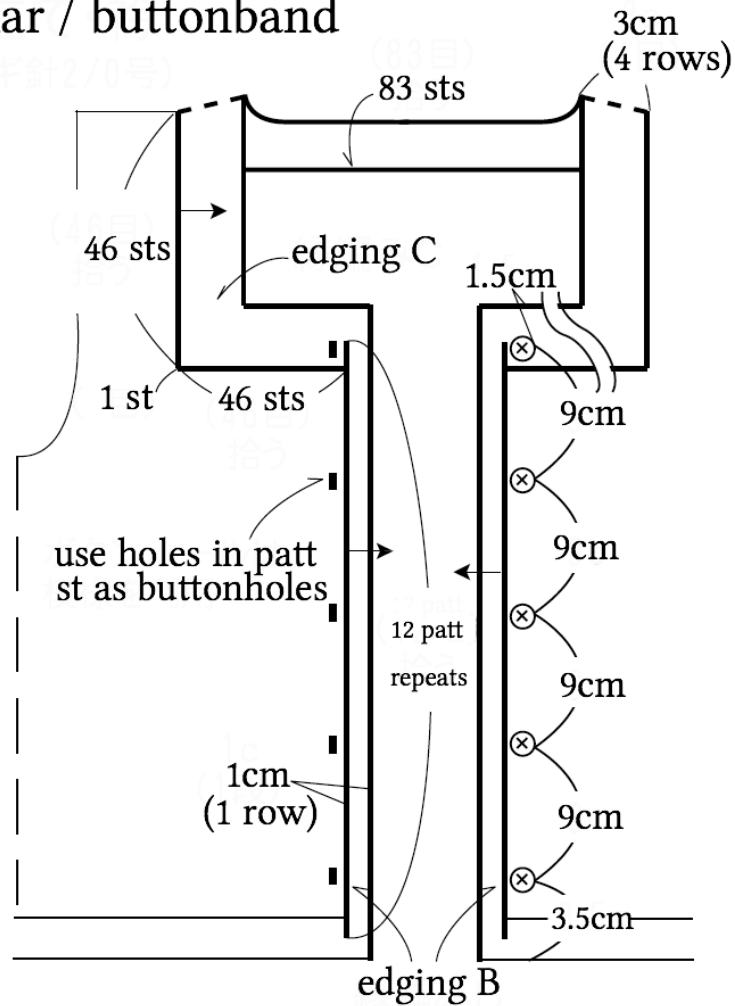
● pattern stitch (2.0mm hook)



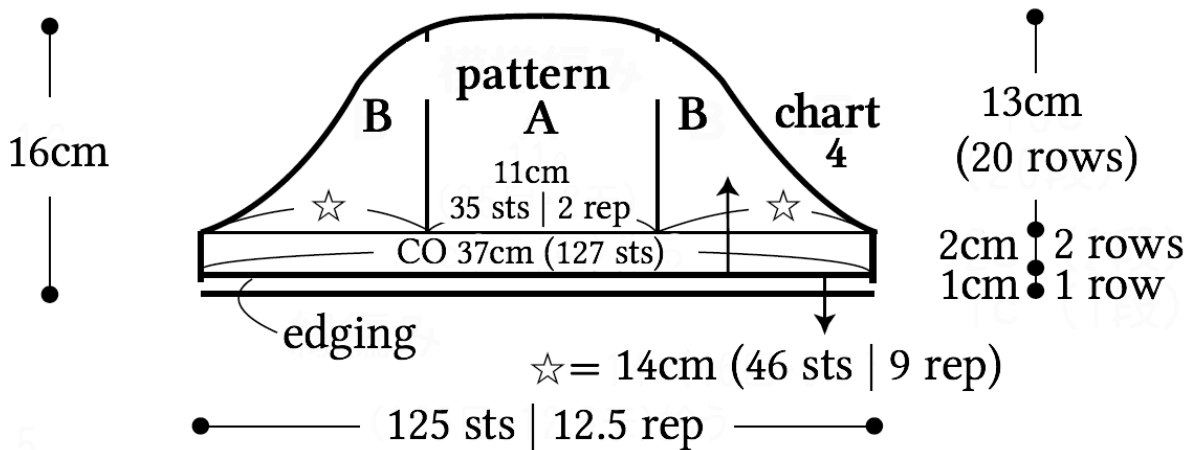


[C1] = chart 1 (and so forth)

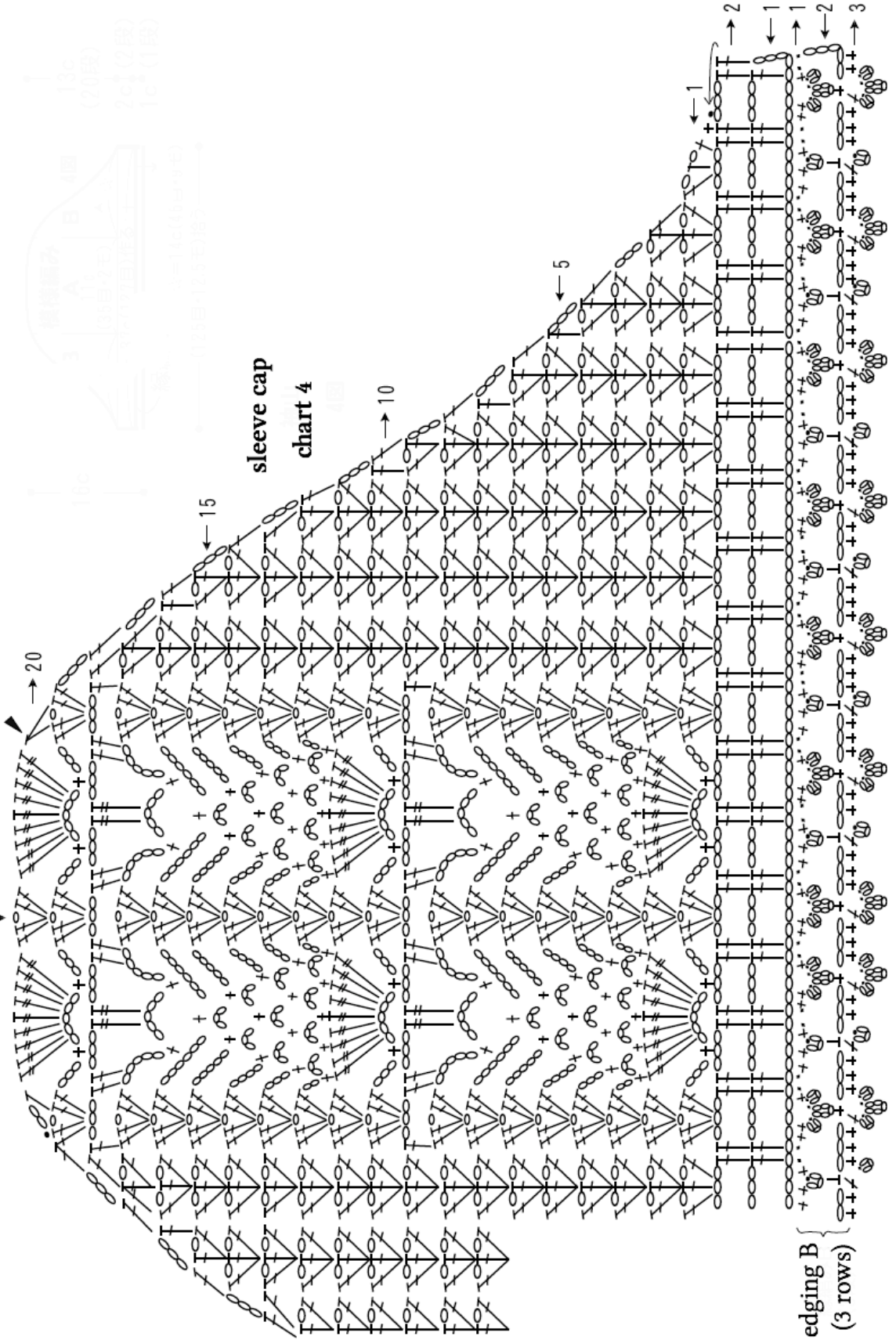
● collar / buttonband



● sleeve



center of sleeve cap



sleeve cap
chart 4

edging B
(3 rows)