

29-210-20 Camisole

© Pierrot Yarns (Gosyo Co., Ltd.). Translation by Linda Lanz.



Materials

- Pierrot Yarns Junmo Namibuto2 [100% merino wool; 78.7yds/72m per 1.41 oz / 40g skein]; color #23 rose red; 9 skeins [350g]
- 3.6 and 4.5mm knitting needles or size necessary to achieve gauge; US 5 and 7 are the closest equivalents
- 3.5mm (US E) crochet hook or size necessary to achieve gauge

Gauge

Gauge measured in a swatch 10cm/4" square.

- pattern stitch: 19.5 st and 23.5 rows
- twisted rib: 22 st and 23 rows

Finished measurements

- bust 82cm/32.3"
- back length 74cm/39.1"

Knitting Tips

Front & back: Cast on and knit according to chart. When finished, bind off stitches. Join side seams with mattress stitch. Work edging in the round.

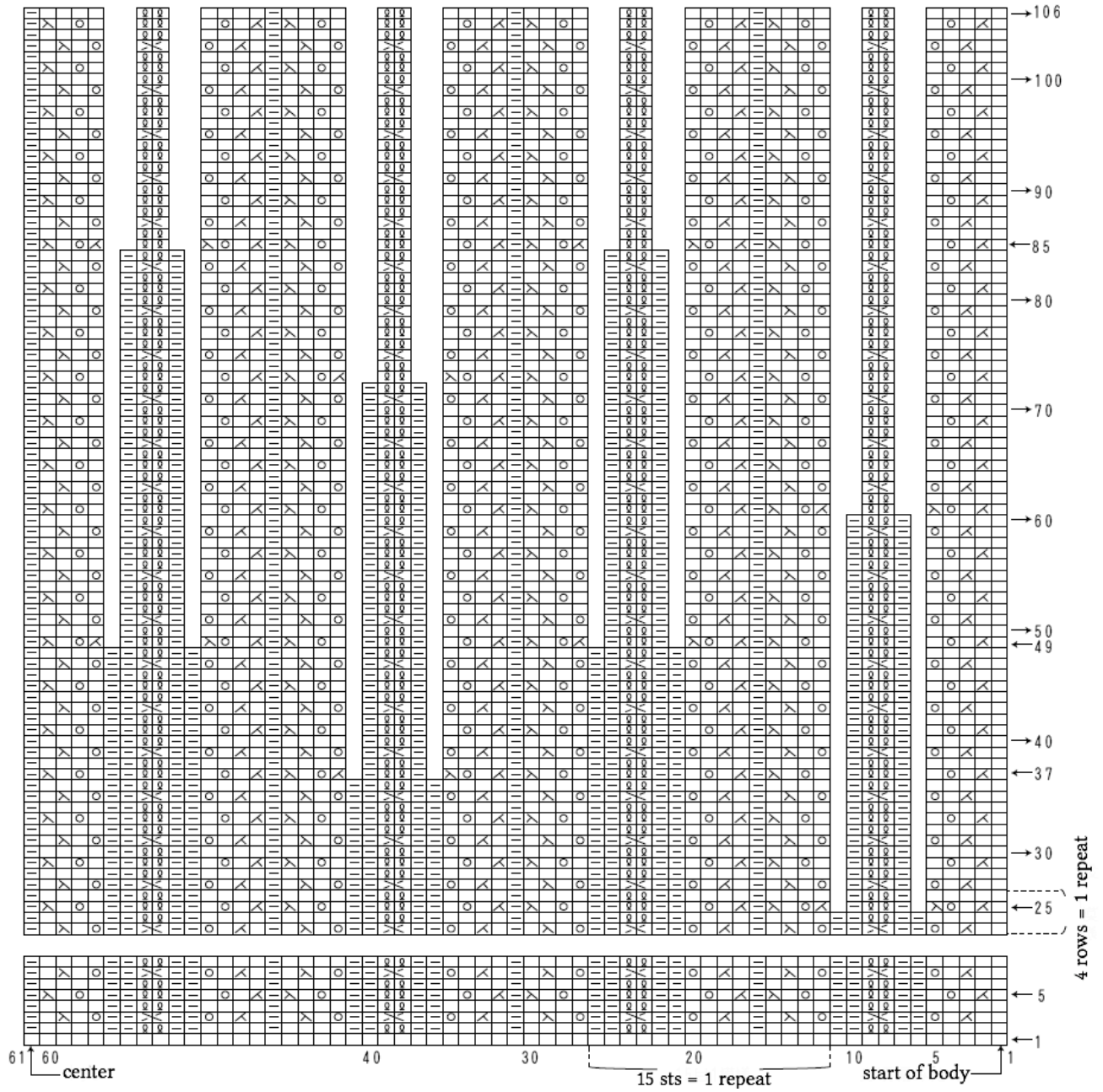
Yoke: Cast on using crochet provisional cast on method. Work twisted rib. When required length is achieved, pick up live stitches from cast on edge. Graft cast on stitches and stitches in final row, thus forming a loop. Seam rows of yoke to stitches of front/back. For ribbon at center of yoke, pick up stitches from the wrong side of garment, centering them at front as shown in schematic. Work in twisted rib, then bind off. Wrap ribbon around yoke, then seam on right side of garment front. Knit shoulder straps and attach to yoke.



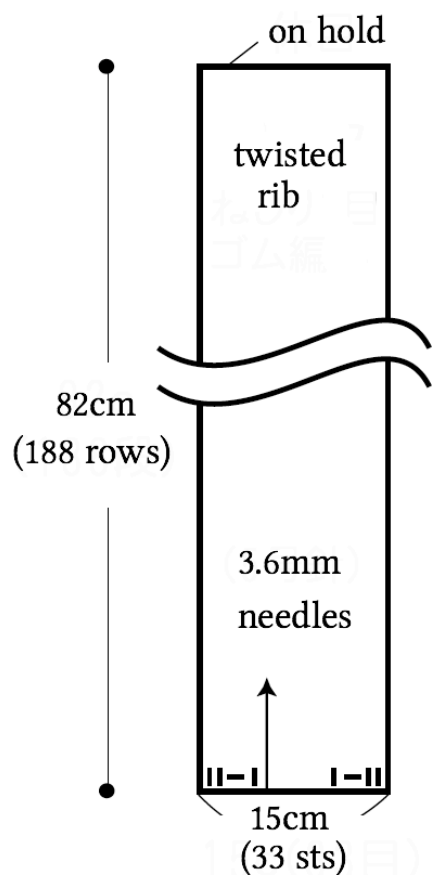
—	Q	—	Q	—	Q	—	
—	Q	—	Q	—	Q	—	
—	Q	—	Q	—	Q	—	
—	Q	—	Q	—	Q	—	
—	Q	—	Q	—	Q	—	
—	Q	—	Q	—	Q	—	
—		—		—		—	

● pattern stitch (4.5mm)

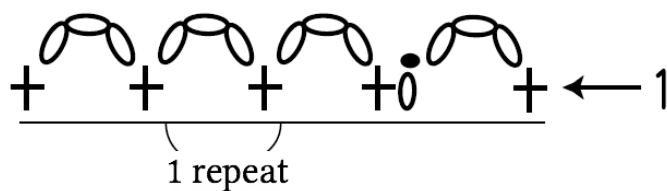
□ = □ knit stitch



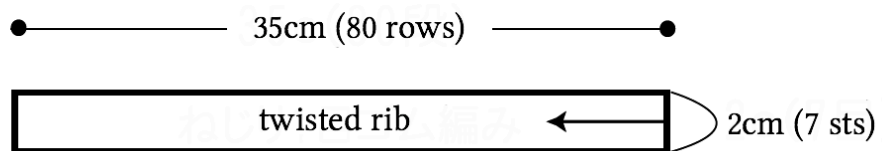
● yoke



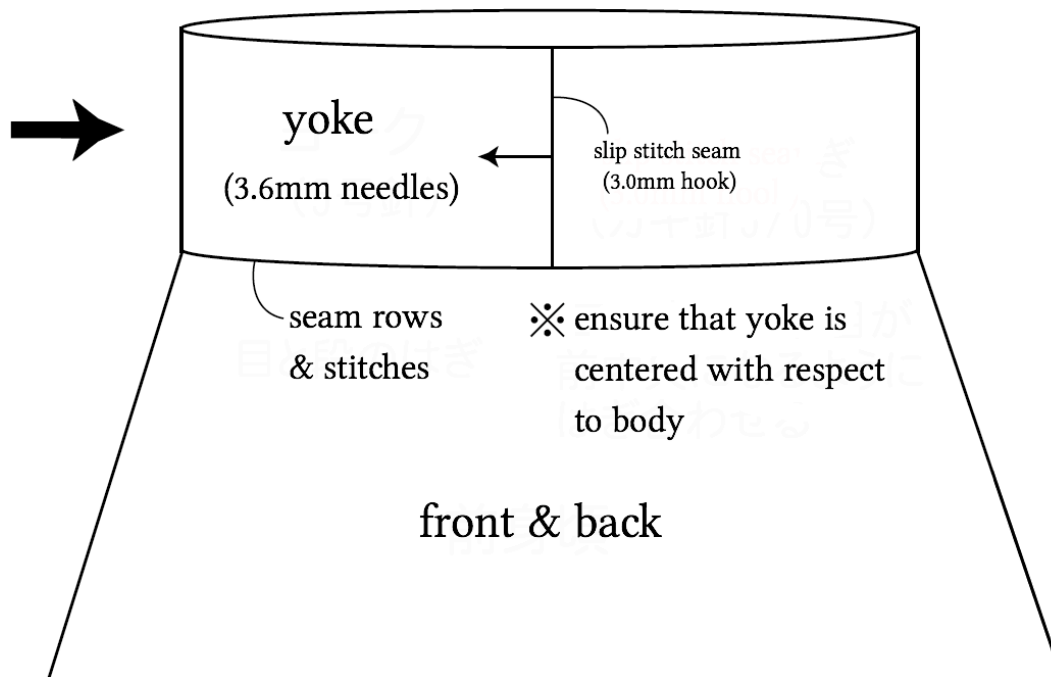
● edging (3.5mm hook)



● shoulder straps (make 2) (3.6mm needles)



※ pick up live stitches from provisional cast on edge,
then graft beginning and end of yoke



● ribbon

