

28-10 Cotton Smile Cardigan

© Pierrot Yarns (Gosyo Co., Ltd.). Translation by Linda Lanz.



Materials

- Pierrot Yarns Cotton Smile [100% cotton; 109 yds/ 100 m per 1.41 oz / 40g skein]; color #20 smoke gray; 10 skeins [400g]
- 2.5mm crochet hook or size necessary to achieve gauge; US C is the closest equivalent
- 4 buttons (15mm / approx. 5/8")

Gauge

Gauge is measured in a swatch 10cm/4" square.

- pattern stitch: 25 st and 12 rows

Finished measurements

- bust 93cm/36.6"
- back width 35cm/13.8"
- length 54cm/21.3"
- sleeve length 47cm/18.5"

Crochet Tips

Motif joining: On the last round of each motif, use slip stitch to link adjoining motifs. Make and join number of motifs indicated in schematics.

Body & sleeves: Work 23 sts along top edge of each motif (except that for third and eighth motifs only, work 24 sts), for a total of 232 sts across all 10 motifs. From top of motifs until armhole shaping begins, work back and front in one piece. Continue in pattern stitch, starting with one row of dc (US). At waist, work decreases/increases spaced evenly across; all waistline increases/decreases occur within span of 8 dc – see *waist shaping* chart below. Starting from the armholes, work right front, back, and left front separately.

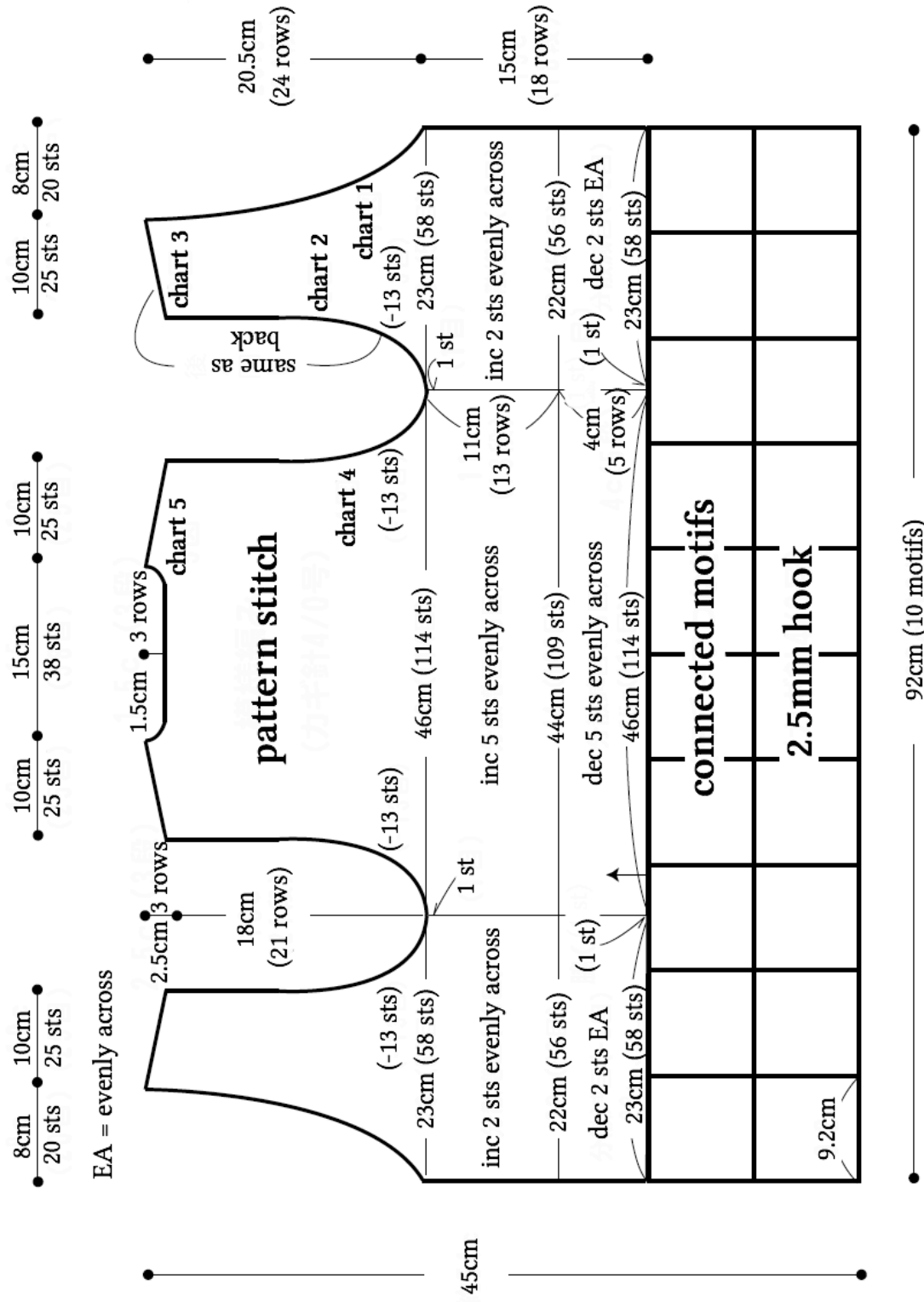
Finishing: Join shoulder seams with whipstitch. Join sleeve seams with single crochet seam. Work edging along neckline and front plackets.

Work buttonholes along right front placket. Join sleeves to body with mattress stitch.

● left front

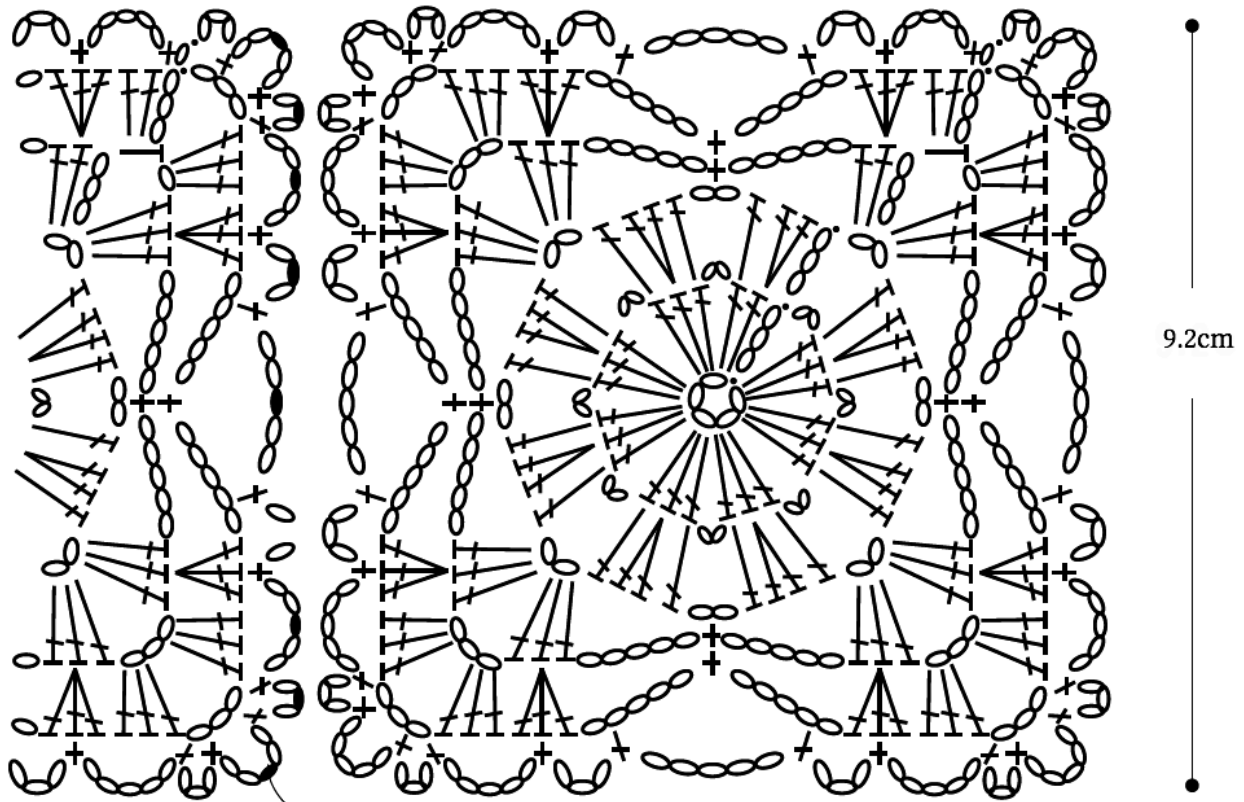
●back

● right front

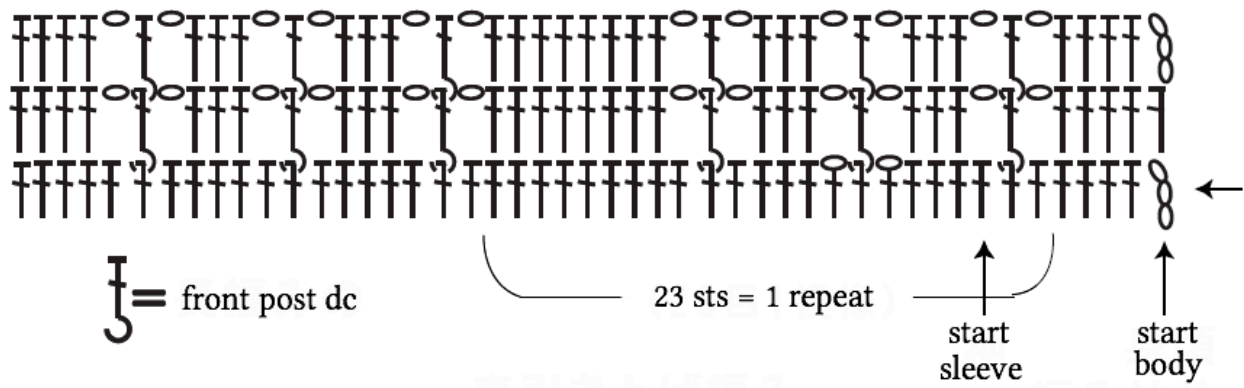


※ Work evenly distributed increases & decreases to shape waistline.

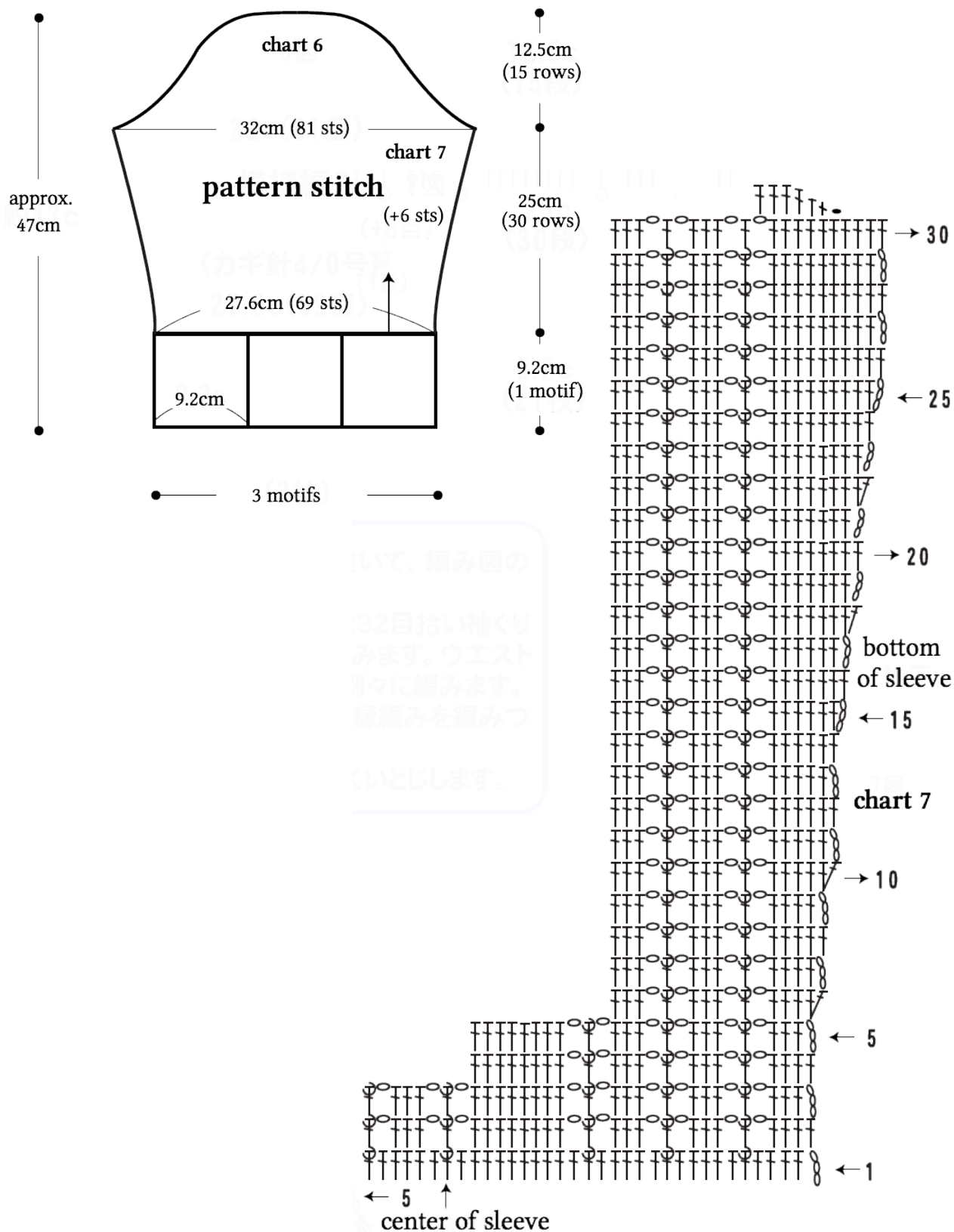
● motif



● pattern stitch

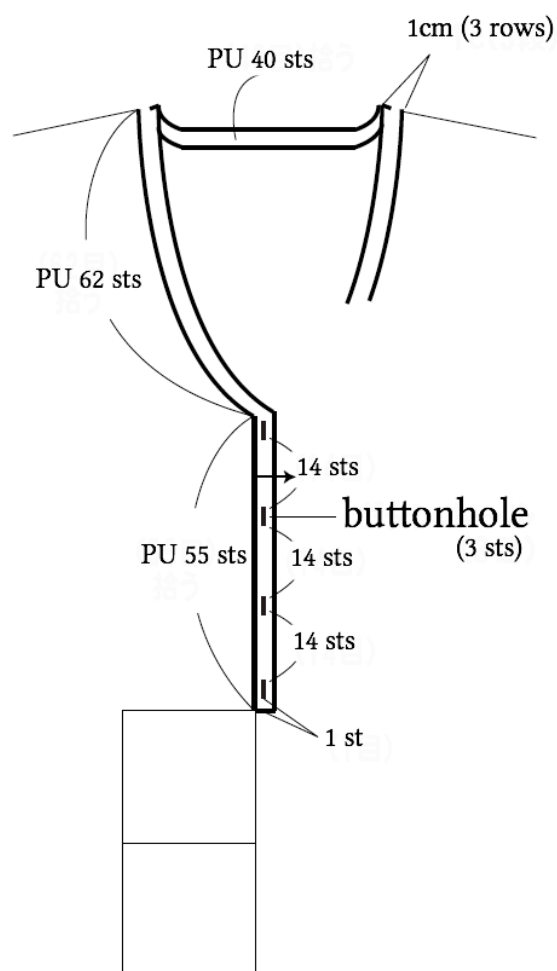


● sleeve

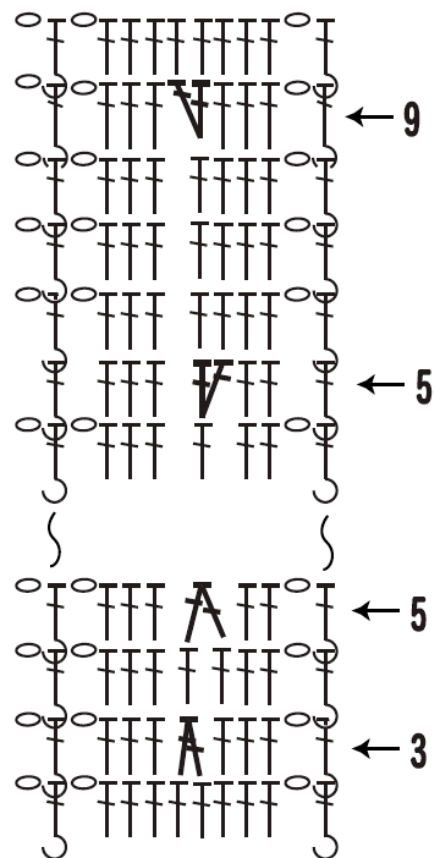


● collar & placket edging

PU = pick up



● waist shaping



● edging & buttonholes

